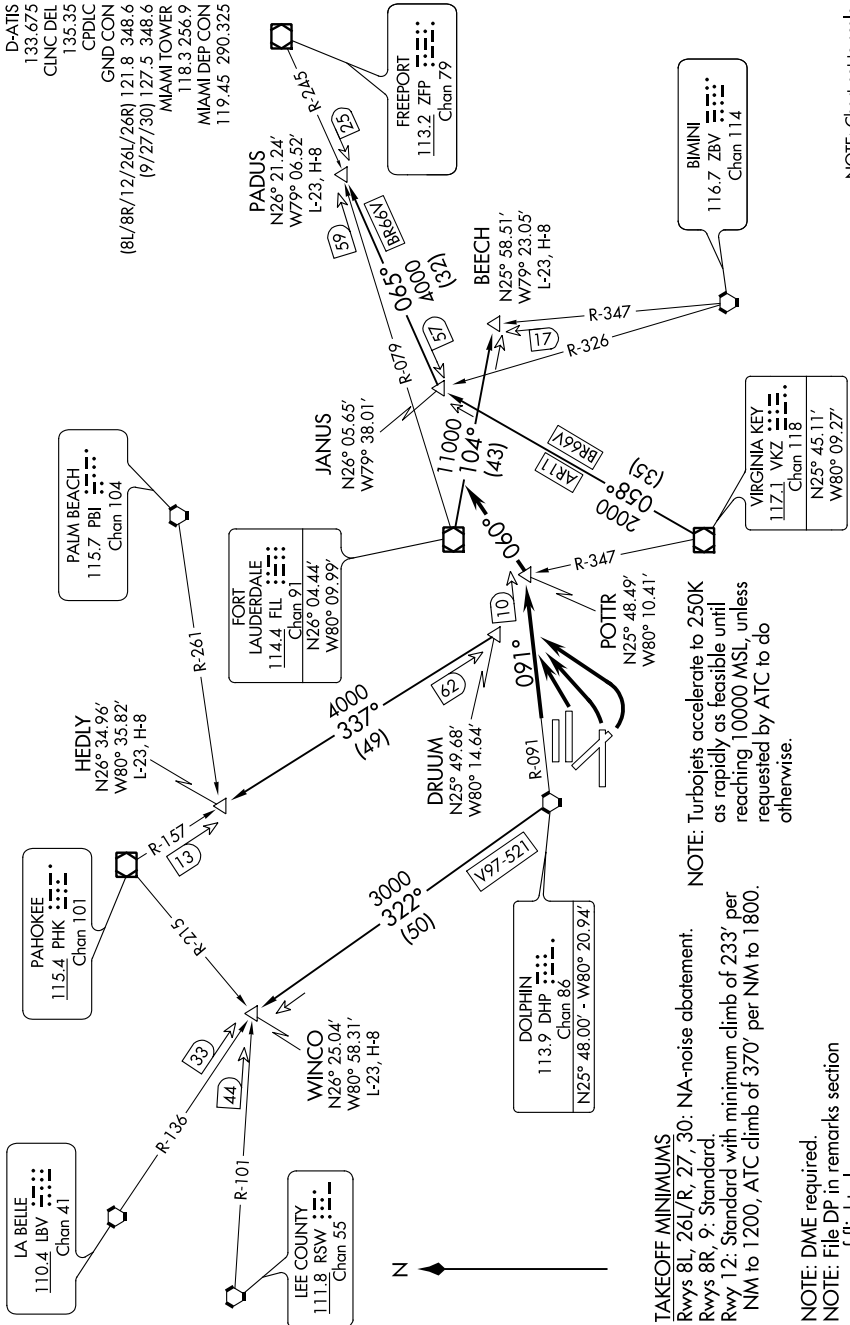


POTR SIX DEPARTURE

SE-3, 25 FEB 2021 to 25 MAR 2021



D-ATIS
133.675
CLNC DEL
135.35
CPDIC
GND CON
(8L/8R/12/26L/26R) 121.8 348.6
(9/27/30) 127.5 348.6
MIAMI TOWER
118.3 256.9
MIAMI DEP CON
119.45 290.325

NOTE: Chart not to scale.
**TOP ALTITUDE:
5000**

NOTE: Turbojets accelerate to 250K as rapidly as feasible until reaching 10000 MSL, unless requested by ATC to do otherwise.

TAKEOFF MINIMUMS
Rwys 8L, 26L/R, 27, 30: NA-noise abatement.
Rwys 8R, 9: Standard.
Rwy 12: Standard with minimum climb of 233' per NM to 1200, ATC climb of 370' per NM to 1800.

NOTE: DME required.
NOTE: File DP in remarks section of flight plan.
NOTE: Turbojets only, night use for noise abatement (2300 LCL-0600 LCL).

(NARRATIVE ON FOLLOWING PAGE)

SE-3, 25 FEB 2021 to 25 MAR 2021

POTR SIX DEPARTURE