

MIAMI, FLORIDA

AL-257 (FAA)

20086

WAAS CH 86903 W26A	APP CRS 272°	Rwy Idg 8600 TDZE 8 Apt Elev 9
---------------------------------	------------------------	---

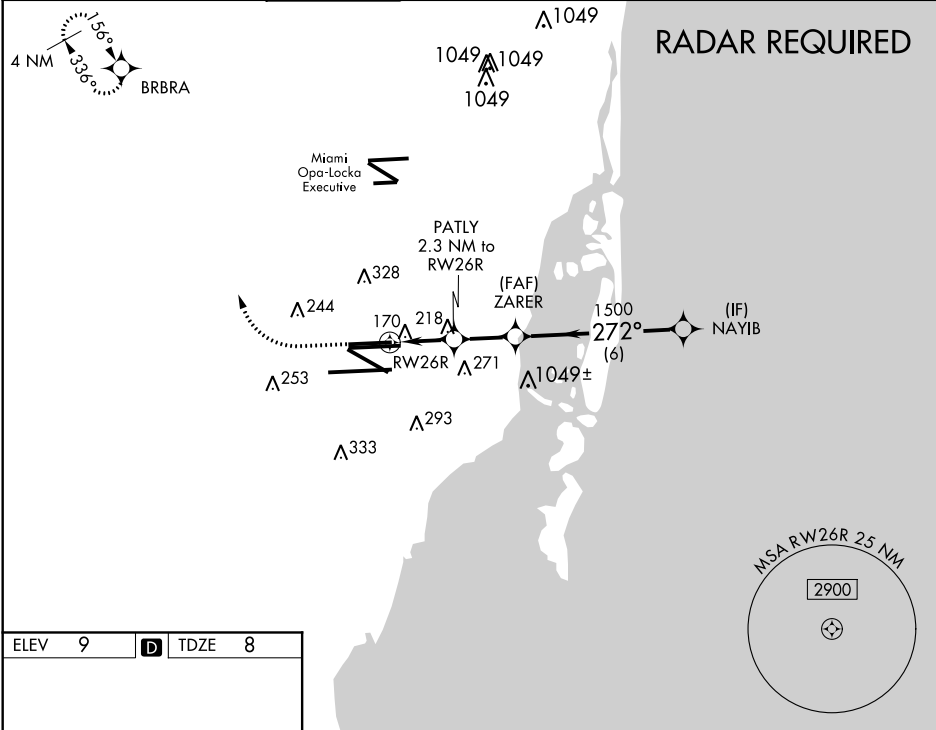
RNAV (GPS) RWY 26R

MIAMI INTL (MIA)

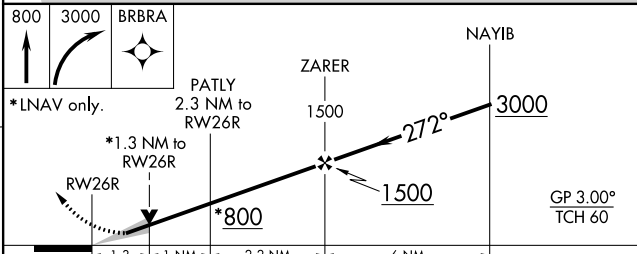
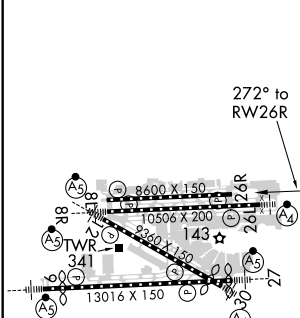
▼ For uncompensated Baro-VNAV systems, LNAV/VNAV NA below 6°C (43°F) or above 54°C (130°F). Simultaneous approach authorized with ILS or LOC RWY 27. DME/DME RNP-0.3 NA. LNAV procedure NA during simultaneous operations. Use of FD or AP providing RNAV track guidance required during simultaneous operations.

MISSED APPROACH: Climb to 800 then climbing right turn to 3000 direct BRBRA and hold.

D-ATIS ARR 119.15 DEP 133.675	MIAMI APP CON 124.85 322.3	MIAMI TOWER 118.3 256.9	GND CON 121.8 (8L/8R/12/26L/26R) 127.5 (9/27/30)	348.6	CLNC DEL 135.35	CPDLC
---	--------------------------------------	-----------------------------------	--	--------------	---------------------------	-------



ELEV 9	D	TDZE 8
--------	----------	--------



CATEGORY	A	B	C	D
LPV DA		265- $\frac{3}{4}$	257 (300- $\frac{3}{4}$)	
LNAV/VNAV DA		433- $\frac{1}{8}$	425 (500- $\frac{1}{8}$)	
LNAV MDA	480-1	472 (500-1)	480- $\frac{1}{8}$	472 (500- $\frac{1}{8}$)

TDZ/CL Rwy 8R
REIL Rwy 8L and 26R
HIRL all Rwy's

MIAMI, FLORIDA
Amdt 3 21JUL16

25°48'N-80°17'W

RNAV (GPS) RWY 26R

SE-3, 25 FEB 2021 to 25 MAR 2021

SE-3, 25 FEB 2021 to 25 MAR 2021