

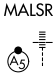
WAAS CH <b>81931</b> <b>W09A</b>	APP CRS <b>092°</b>	Rwy Idg <b>11397</b> TDZE <b>7</b> Apt Elev <b>9</b>
--	------------------------	--

# RNAV (GPS) RWY 9

MIAMI INTL (MIA)

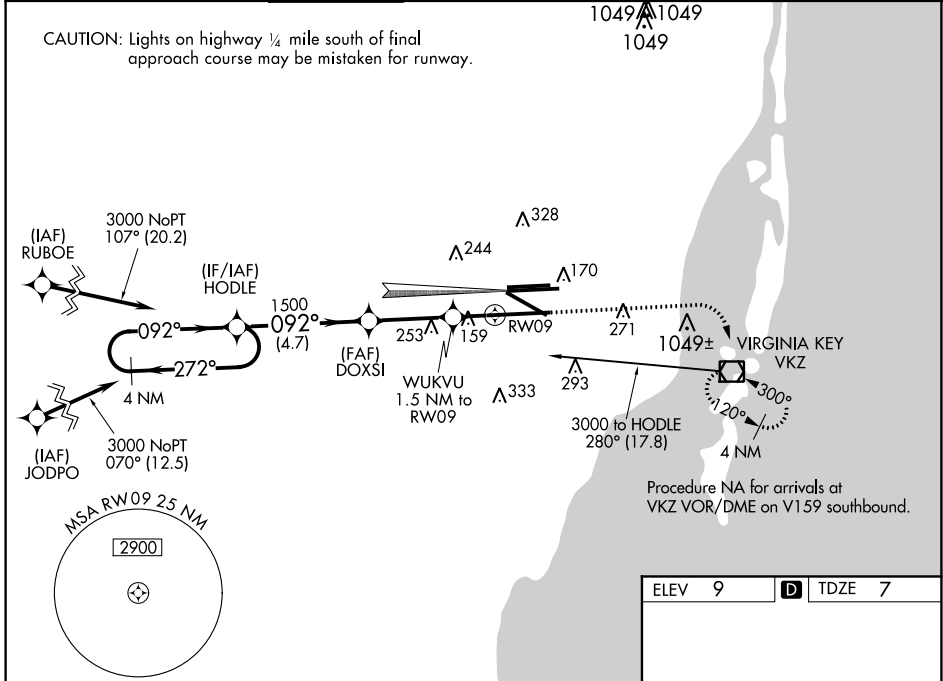
▼ For uncompensated Baro-VNAV systems, LNAV/VNAV NA below 5°C (41°F) or above 54°C (130°F). DME/DME RNP-0.3 NA. Simultaneous approach authorized with ILS or LOC Rwy 8R and RNAV (GPS) Rwy 8L. LNAV procedure NA during simultaneous operations. Use of FD or AP providing RNAV track guidance required during simultaneous operations. Helicopter visibility reduction below RVR 4000 NA. For inop MALSR, increase LPV Cat E visibility to RVR 4000, LNAV/VNAV Cat E visibility to 1 3/8 mile, LNAV Cats A and B visibility to RVR 5500 and Cats C, D, and E visibility to 1 3/8 mile. \*\*RVR 1800 authorized with use of FD or AP or HUD to DA.

MALSRL



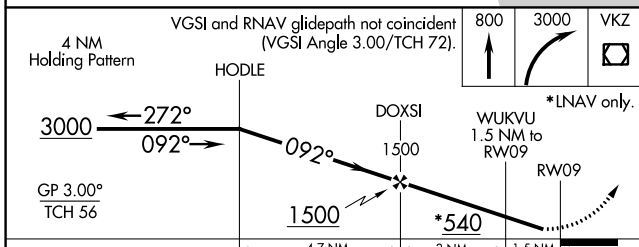
MISSED APPROACH:  
Climb to 800 then climbing right turn to 3000 direct VKZ VOR/DME and hold, continue climb-in-hold to 3000.

D-ATIS	MIAMI APP CON	MIAMI TOWER	GND CON	CLNC DEL	CPDLC
ARR <b>119.15</b> DEP <b>133.675</b>	<b>124.85 322.3</b>	<b>118.3 256.9</b>	<b>121.8</b> (8L/8R/12/26L/26R) <b>348.6</b> <b>127.5</b> (9/27/30)	<b>135.35</b>	

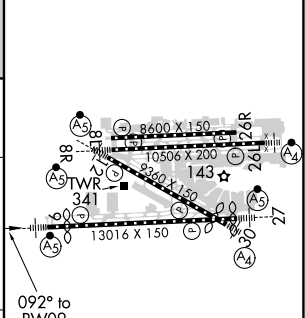


SE-3, 25 FEB 2021 to 25 MAR 2021

SE-3, 25 FEB 2021 to 25 MAR 2021



ELEV 9	<b>D</b> TDZE 7
--------	-----------------



CATEGORY	A	B	C	D	E
LPV DA**		207/24	200 (200-1/2)		
LNAV/VNAV DA		428/46	421 (500-1)		
LNAV MDA	460/40	453 (500-3/4)	460/45	453 (500-7/8)	

TDZ/CL Rwy 8R  
REIL Rwy 8L and 26R  
HIRL all Rwy 9