

APP CRS	Rwy Idg	<b>10220</b>
<b>272°</b>	TDZE	<b>8</b>
	Apt Elev	<b>9</b>

# RNAV (RNP) Y RWY 26L

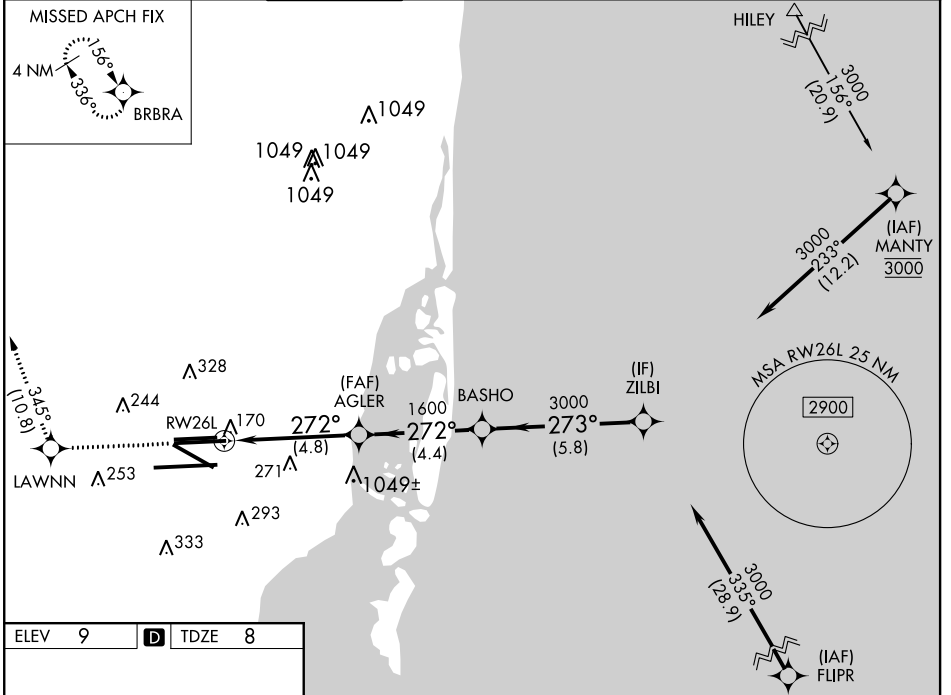
MIAMI INTL (MIA)

**▽** For uncompensated Baro-VNAV systems, procedure NA below 6°C (43°F) or above 54°C (130°F). GPS Required. For inop MALSF, increase RNP 0.20 Cat D visibility to RVR 6000 and increase RNP 0.30 Cat D visibility to 1 3/4 mile.

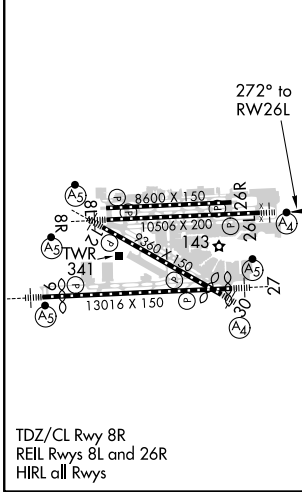


**MISSED APPROACH:** Climb to 2000 direct LAWNN and on track 345° to BRBRA and hold.

D-ATIS	MIAMI APP CON	MIAMI TOWER	GND CON	CLNC DEL	CPDLC
ARR <b>119.15</b>	<b>124.85 322.3</b>	<b>118.3 256.9</b>	<b>121.8</b> (8L/8R/12/26L/26R)	<b>135.35</b>	
DEP <b>133.675</b>			<b>127.5</b> (9/27/30)	<b>348.6</b>	



ELEV 9	<b>D</b>	TDZE 8
--------	----------	--------



2000	LAWNN	tr 345°	BRBRA	VGSI and RNAV glidepath not coincident (VGSI Angle 3.00/TCH 73).
				BASHO ZILBI
				AGLER 1600 272° 3000 273° 3000
				RW26L 1600 GP 3.00° TCH 58
	4.8 NM	4.4 NM	5.8 NM	
CATEGORY	A	B	C	D
RNP 0.20 DA		370/45	362 (400-1)	
RNP 0.30 DA		420/60	412 (500-1 1/4)	

## AUTHORIZATION REQUIRED

SE-3, 25 FEB 2021 to 25 MAR 2021

SE-3, 25 FEB 2021 to 25 MAR 2021