


| | | |
|-------------|----------|--------------|
| APP CRS | Rwy Idg | 10506 |
| 092° | TDZE | 8 |
| | Apt Elev | 9 |

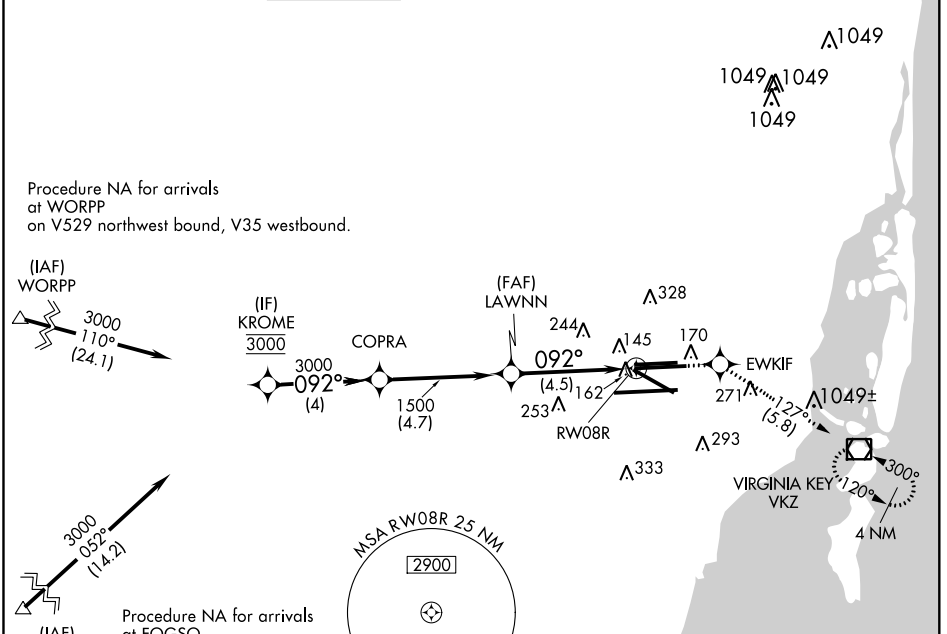
RNAV (RNP) Y RWY 8R

MIAMI INTL (MIA)

▼ For uncompensated Baro-VNAV systems, procedure NA below 6°C (43°F) or above 54°C (130°F). GPS required. For inop MALSRS, increase RNP 0.11 all Cats visibility to 1¼ mile.
 *Missed approach requires minimum climb of 330 feet per NM to 600.

MALSRS  **MISSED APPROACH:** Climb to 3000 direct EWKIF and on track 127° to VKZ VOR/DME and hold, continue climb-in-hold to 3000.

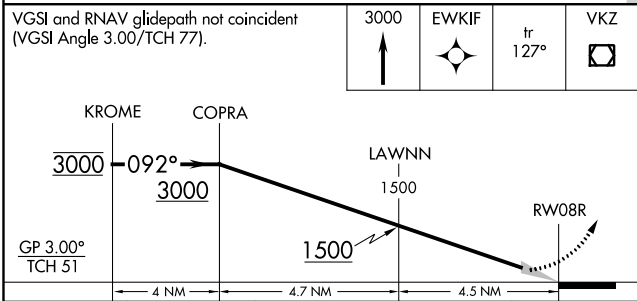
| | | | | | |
|--------------------|---------------------|--------------------|---------------------------------|---------------|-------|
| D-ATIS | MIAMI APP CON | MIAMI TOWER | GND CON | CLNC DEL | CPDLC |
| ARR 119.15 | 124.85 322.3 | 118.3 256.9 | 121.8 (8L/8R/12/26L/26R) | 135.35 | |
| DEP 133.675 | | | 127.5 (9/27/30) | 348.6 | |



SE-3, 25 FEB 2021 to 25 MAR 2021

SE-3, 25 FEB 2021 to 25 MAR 2021

| | | | |
|--|---|---|---|
| VGSI and RNAV glidepath not coincident (VGSI Angle 3.00/TCH 77). | 3000 | EWKIF | VKZ |
| |  |  |  |
| | | tr 127° |  |



| | |
|--------|--------|
| ELEV 9 | TDZE 8 |
|--------|--------|

092° to RW08R

TDZ/CL Rwy 8R
REIL Rwy 8L and 26R
HIRL all Rwy 8R

| | | | | |
|--------------|---|--------|--------------|---|
| CATEGORY | A | B | C | D |
| *RNP 0.11 DA | | 397/45 | 389 (400-7%) | |
| RNP 0.30 DA | | 458/50 | 450 (500-1) | |

AUTHORIZATION REQUIRED