

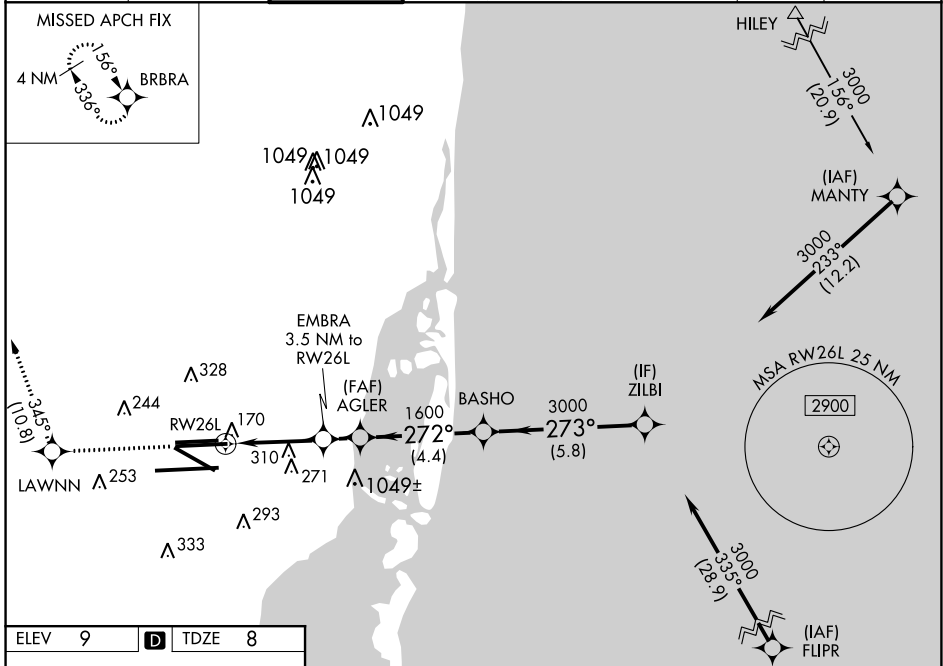
WAAS CH 81905 W26B	APP CRS 272°	Rwy Idg 10220 TDZE 8 Apt Elev 9
--	------------------------	--

RNAV (GPS) Z RWY 26L

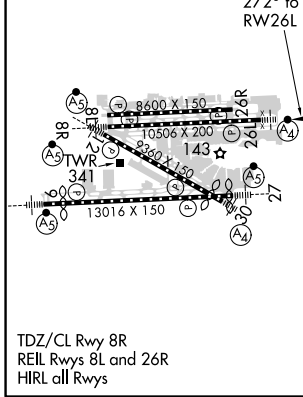
MIAMI INTL (MIA)

<p>▼ Inop table does not apply to LPV all Cats. For uncompensated Baro-VNAV systems, LNAV/VNAV NA below 6°C (43°F) or above 54°C (130°F). DME/DME RNP-0.3 NA. For inop MALSF, increase LNAV/VNAV Cat D visibility to RVR 6000 and LNAV Cat D visibility to 1½ mile.</p>	<p>MALSF</p>	<p>MISSED APPROACH: Climb to 2000 direct LAWNN and on track 345° to BRBRA and hold.</p>
---	--------------	---

D-ATIS ARR 119.15 DEP 133.675	MIAMI APP CON 124.85 322.3	MIAMI TOWER 118.3 256.9	GND CON 121.8 (8L/8R/12/26L/26R) 127.5 (9/27/30)	348.6	CLNC DEL 135.35	CPDLC
---	--------------------------------------	-----------------------------------	--	--------------	---------------------------	-------



ELEV 9	D	TDZE 8
---------------	----------	---------------



2000	LAWNN	tr 345°	BRBRA	VGSI and descent angles not coincident (VGSI Angle 3.00/TCH 73).
*LNAV only.				
	EMBRA	AGLER	BASHO	ZILBI
	3.5 NM to RW26L	1600	3000	3000
	*1.5 NM to RW26L	272°	3000	3000
	RW26L	*1180	1600	GP 3.00° TCH 58
	1.5	2 NM	1.3 NM	4.4 NM
	5.8 NM			
CATEGORY	A	B	C	D
LPV DA		208/40	200 (200-¾)	
LNAV/VNAV DA		348/45	340 (400-¾)	
LNAV MDA	560/40	552 (600-¾)	560-1⅓	552 (600-1⅓)

SE-3, 25 FEB 2021 to 25 MAR 2021

SE-3, 25 FEB 2021 to 25 MAR 2021