

MIAMI, FLORIDA

AL-257 (FAA)

19115

WAAS CH 40205 W27A	APP CRS 272°	Rwy Idg 12755 TDZE 8 Apt Elev 9
--	------------------------	--

RNAV (GPS) Z RWY 27

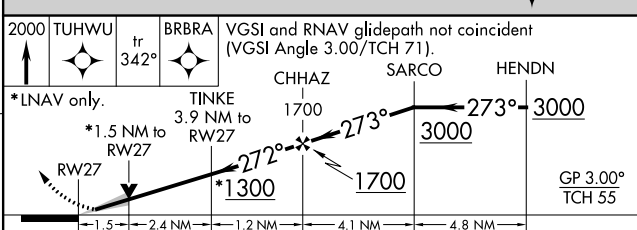
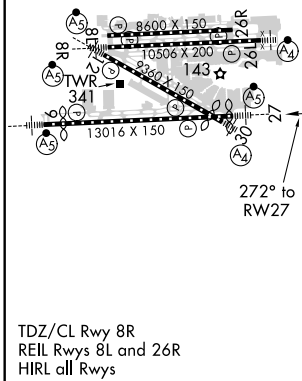
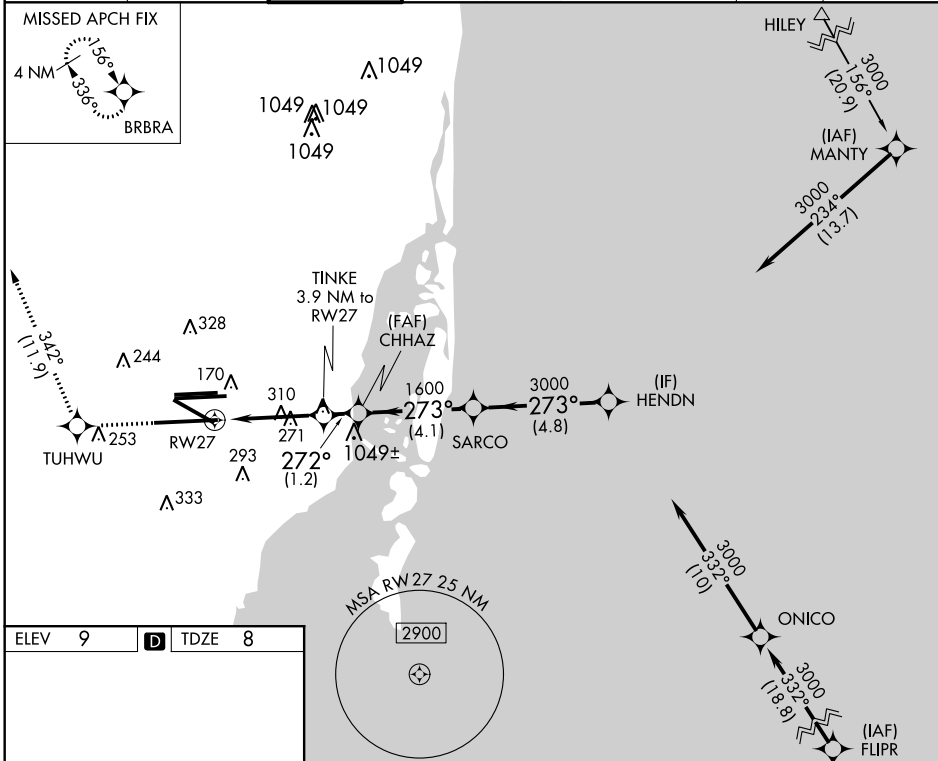
MIAMI INTL (MIA)

▼ For uncompensated Baro-VNAV systems, LNAV/VNAV NA below 6°C (43°F) or above 54°C (130°F). DME/DME RNP-0.3 NA. For inop MALSR, increase LPV Cat E visibility to RVR 4000, LNAV/VNAV all Cats visibility to 1½ mile, and LNAV Cat E visibility to 1¾ mile. **RVR 1800 authorized with use of FD or AP or HUD to DA.



MISSED APPROACH:
Climb to 2000 direct TUHWU and on track 342° to BRBRA and hold.

D-ATIS ARR 119.15 DEP 133.675	MIAMI APP CON 124.85 322.3	MIAMI TOWER 118.3 256.9	GND CON 121.8 (8L/8R/12/26L/26R) 127.5 (9/27/30)	348.6	CLNC DEL 135.35	CPDLC
---	--------------------------------------	-----------------------------------	--	--------------	---------------------------	-------



2000 TUHWU	tr 342°	BRBRA	VGSI and RNAV glidepath not coincident (VGSI Angle 3.00/TCH 71).		
*LNAV only.		TINKE 3.9 NM to RW27	CHHAZ 1700	SARCO 273°	HENDN 3000
*1.5 NM to RW27		*1300	272°	1700	3000
272° to RW27		GP 3.00° TCH 55			
CATEGORY	A	B	C	D	E
LPV DA**	208/24 200 (200-½)				
LNAV/VNAV DA	440/50 432 (500-1)				
LNAV MDA	560/24	552 (600-½)	560/60	552 (600-1¼)	

MIAMI, FLORIDA
Amdt 3A 17AUG17

25°48'N-80°17'W

RNAV (GPS) Z RWY 27

SE-3, 25 FEB 2021 to 25 MAR 2021

SE-3, 25 FEB 2021 to 25 MAR 2021