

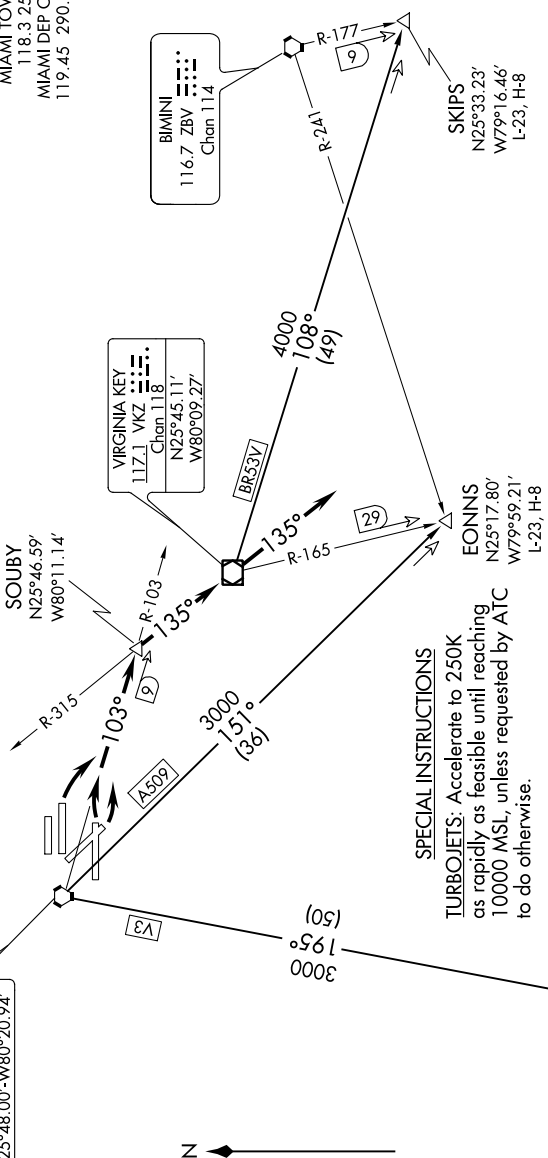
SOUBY FIVE DEPARTURE

SE-3, 25 FEB 2021 to 25 MAR 2021

TOP ALTITUDE:
5000

D-ATIS 133.675
CLNC DEL 135.33
CPDLC
GND CON
(8L/8R/12/26L/26R) 121.8 348.6
(9/27/30) 127.5 348.6
MIAMI TOWER
118.3 256.9
MIAMI DEP CON
119.45 290.325

DOLPHIN
113.9 DHP
Chan 86
N25°48.00'-W80°20.94'



VIRGINIA KEY
117.1 VKZ
Chan 118
N25°45.11'
W80°09.27'

BIMINI
116.7 ZBV
Chan 114

SPECIAL INSTRUCTIONS
TURBOJETS: Accelerate to 250K as rapidly as feasible until reaching 10000 MSL, unless requested by ATC to do otherwise.

NOTE: Unless otherwise instructed, continue heading 135° after VKZ VOR/DME until ATC issues vectors to appropriate transition.

NOTE: Turbojets Only, night use for noise abatement (2300 LCL - 0600 LCL).
NOTE: File DP in remarks section of flight plan.
NOTE: DME required.

NOTE: Chart not to scale.

(NARRATIVE ON FOLLOWING PAGE)

TAKEOFF MINIMUMS
Rwys 8R, 9, 12: Standard with minimum climb of 370' per NM to 1800'.
Rwys 26L, 27, 30: NA - NOISE ABATEMENT.

SE-3, 25 FEB 2021 to 25 MAR 2021