

ILS or LOC Y RWY 30

LOC I-MIB 109.9	APCH CRS 298°	Rwy Ldg 13,198 TDZE 1646 Arprt Elev 1666	AL-5013 [USAF]	MINOT AFB (KMIB)
---------------------------	-------------------------	---	----------------	------------------

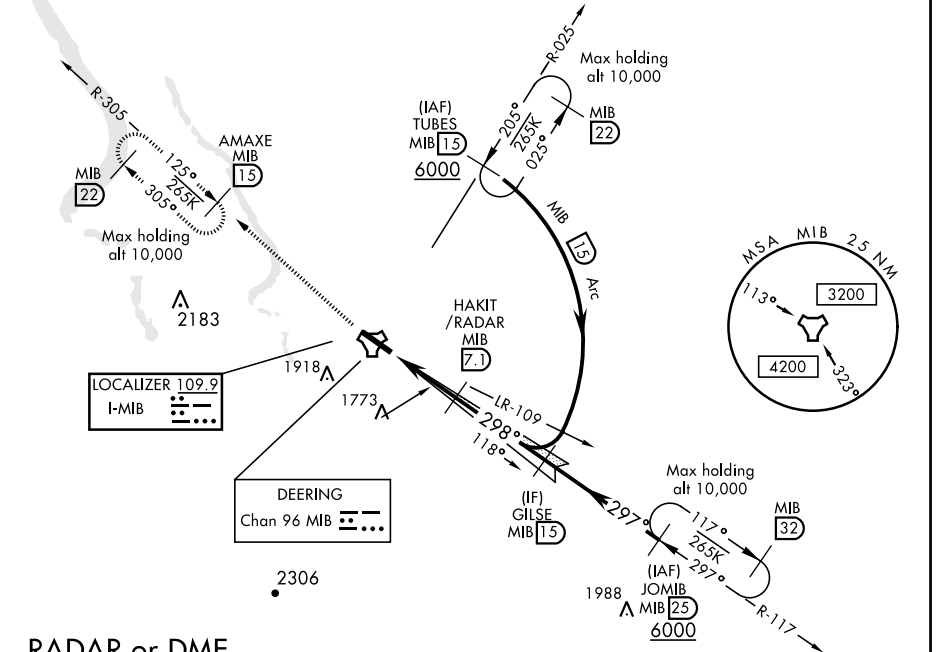
* When ALS inop, increase CAT ABCDE RVR to 40 and vis to ¾ mile.
 ** When ALS inop, increase CAT AB RVR to 55 and vis to 1 mile,
 CAT CDE RVR to 60 and vis to 1 ½ miles.



MISSED APPROACH: Climb to 5000 via
 MIB TACAN R-305 direct AMAXE and hold.

ATIS ★ 278.8	MINOT APP CON 119.6 363.8	MINOT TOWER ★ 120.65 253.5	GND CON 134.0 275.8	CLNC DEL 326.2
------------------------	-------------------------------------	--------------------------------------	-------------------------------	--------------------------

*** Circling not authorized N of Rwy 12-30.

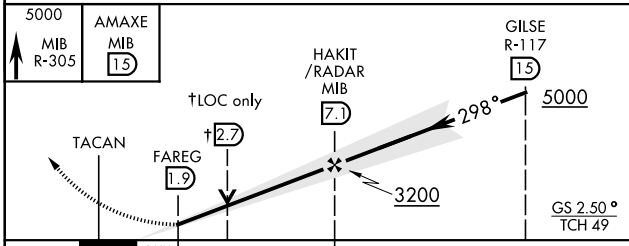


NC-1, 25 FEB 2021 to 25 MAR 2021

NC-1, 25 FEB 2021 to 25 MAR 2021

RADAR or DME REQUIRED

EMERG SAFE ALT 100 NM 4700



CATEGORY	A	B	C	D	E
S-ILS 30 *	1846/24		200	(200-½)	
S-LOC 30 **	2040/24	394 (400-½)	2040/35	394	(400-¾)
CIRCLING ***	2120-1 454 (500-1)	2140-1 474 (500-1)	2180-1½ 514 (600-1½)	2220-2	554 (600-2)

ELEV 1666	TDZE 1646
-----------	-----------

HIRL Rwy 12-30					
FAF to MAP 5.2 NM					
Knots	60	90	120	150	180
Min:Sec	5:12	3:28	2:36	2:05	1:44

ILS or LOC Y RWY 30