

| | | |
|---------------------------------|------------------------|---|
| WAAS CH 78237 W03A | APP CRS 025° | Rwy Idg 5197 TDZE 937 Apt Elev 937 |
|---------------------------------|------------------------|---|

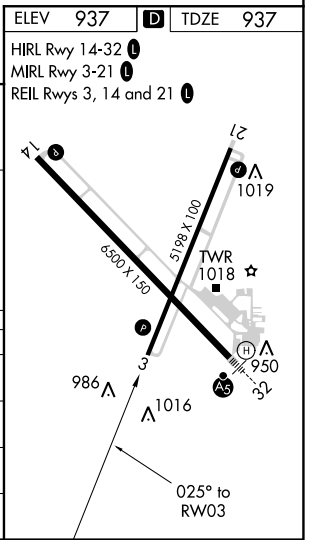
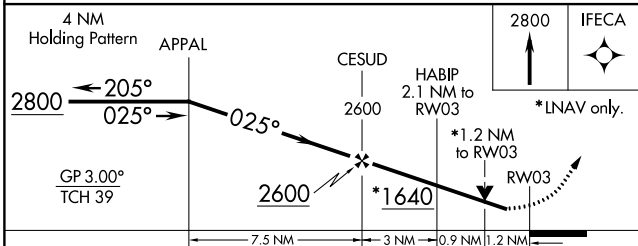
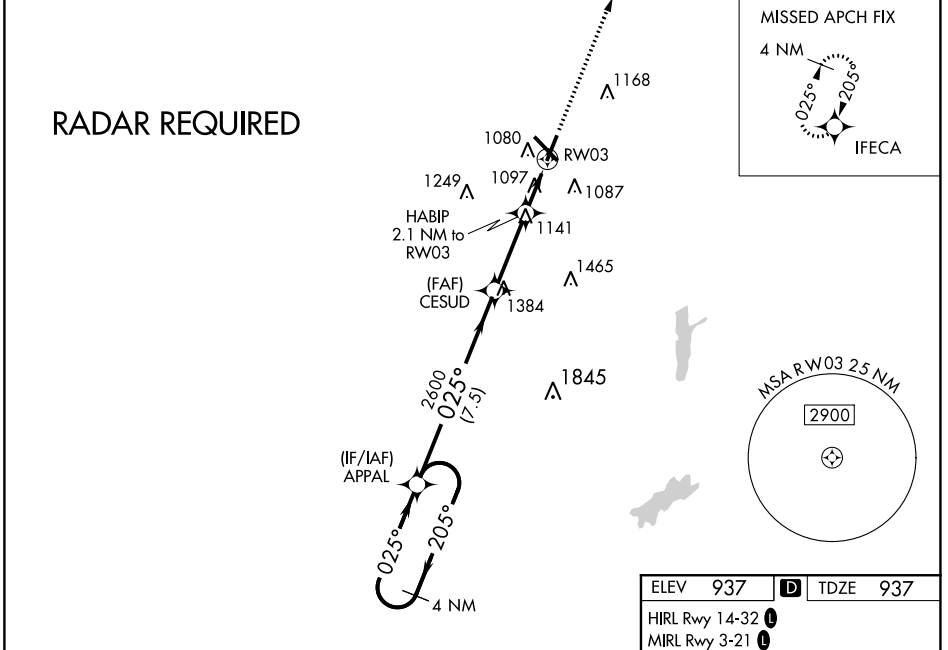
RNAV (GPS) RWY 3

DELAWARE COUNTY RGNL (MIE)

⚠ For uncompensated Baro-VNAV systems, LNAV/VNAV NA below -20°C (-4°F) or above 54°C (130°F). DME/DME RNP-0.3 NA. When local altimeter setting not received, use Fort Wayne Intl altimeter setting and increase all DA 121 feet and all MDA 140 feet; increase LPV all Cats and LNAV Cats C/D visibility 3/8 mile, LNAV/VNAV all Cats visibility 7/8 mile and Circling Cats C/D visibility 1/2 mile. Baro-VNAV NA when using Fort Wayne Intl altimeter setting. Helicopter visibility reduction below 3/4 SM NA.

MISSED APPROACH:
Climb to 2800 direct IFECA and hold.

| | | | | |
|-----------------------|--|---|-------------------------|-------------------------|
| ATIS 133.25 | INDIANAPOLIS CENTER 120.65 317.8 | MUNCIE TOWER ★ 120.1 (CTAF) 0 | GND CON 121.9 | UNICOM 122.95 |
|-----------------------|--|---|-------------------------|-------------------------|



| CATEGORY | A | B | C | D |
|-------------------|--------|-------------|-------------------------------|-----------------------|
| LPV DA | | 1190-7/8 | 253 (300-7/8) | |
| LNAV/VNAV DA | | 1412-15/8 | 475 (500-15/8) | |
| LNAV MDA | 1360-1 | 423 (500-1) | 1360-1 1/4 | 423 (500-1 1/4) |
| C CIRCLING | 1460-1 | 523 (600-1) | 1500-1 1/2 563 (600-1 1/2) | 1600-2 663 (700-2) |

EC-2, 25 FEB 2021 to 25 MAR 2021

EC-2, 25 FEB 2021 to 25 MAR 2021