

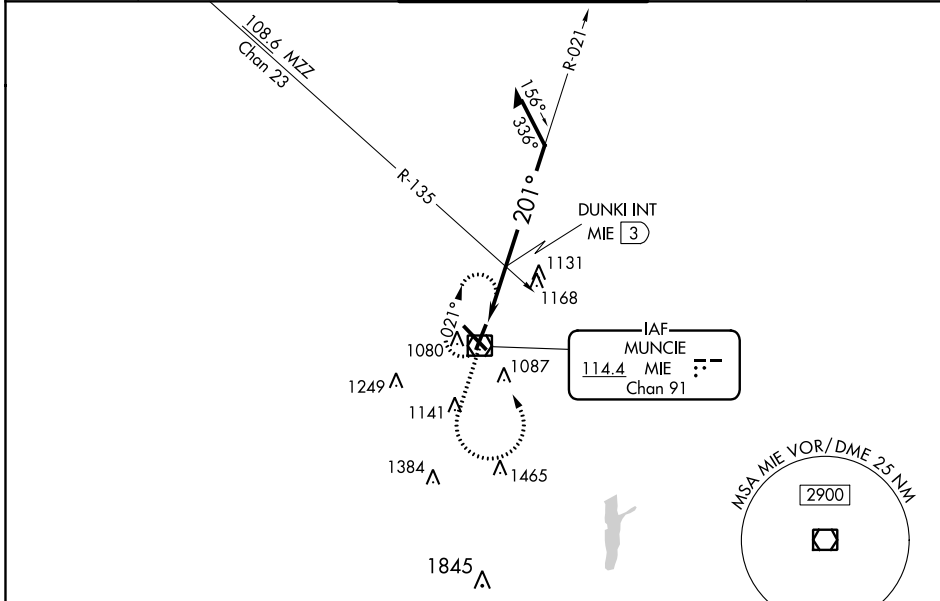
VOR/DME MIE <b>114.4</b> Chan <b>91</b>	APP CRS <b>201°</b>	Rwy Idg <b>5197</b> TDZE <b>935</b> Apt Elev <b>937</b>
---	------------------------	---

**VOR RWY 21**  
DELAWARE COUNTY RGNL (MIE)

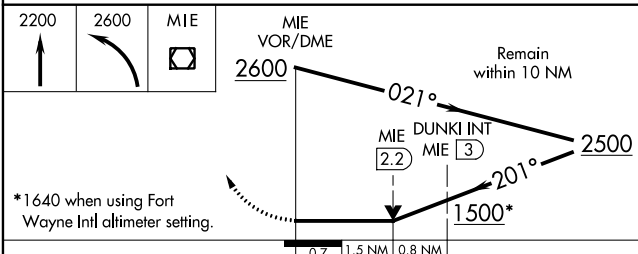
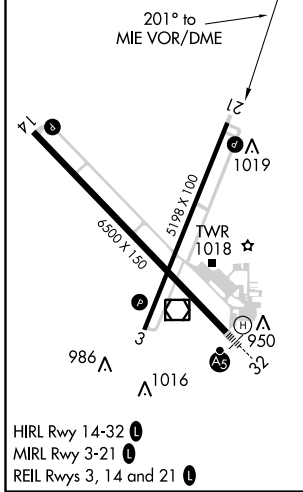
**⚠** Visibility reduction by helicopters NA. When local altimeter setting not received, use Fort Wayne Intl altimeter setting and increase all MDAs 140 feet; increase S-21 Cat C visibility ½ SM and Cat D visibility ¼ SM; increase Circling Cat C visibility ½ SM and Cat D ¼ SM; DUNKI fix minimums: increase S-21 Cat C/D ¾ SM and Circling visibility Cat C/D ½ SM. VDP NA when using Fort Wayne Intl altimeter setting.

**MISSSED APPROACH:** Climb to 2200 then climbing left turn to 2600 direct MIE VOR/DME and hold.

ATIS <b>133.25</b>	INDIANAPOLIS APP CON <b>120.65 317.8</b>	MUNCIE TOWER ★ <b>120.1 (CTAF) 0</b>	GND CON <b>121.9</b>	UNICOM <b>122.95</b>
-----------------------	---	---	-------------------------	-------------------------



ELEV 937	<b>D</b>	TDZE 935
----------	----------	----------



CATEGORY	A	B	C	D
S-21	1500-1 565 (600-1)		1500-1½ 565 (600-1½)	1500-1¾ 565 (600-1¾)
<b>C</b> CIRCLING	1500-1 563 (600-1)		1500-1½ 563 (600-1½)	1560-2 623 (700-2)
<b>DUNKI FIX MINIMUMS (DUAL VOR RECEIVERS OR DME REQUIRED)</b>				
S-21	1440-1 505 (600-1)		1440-1½ 505 (600-1½)	
<b>C</b> CIRCLING	1460-1 523 (600-1)		1480-1½ 543 (600-1½)	1560-2 623 (700-2)

EC-2, 25 FEB 2021 to 25 MAR 2021

EC-2, 25 FEB 2021 to 25 MAR 2021