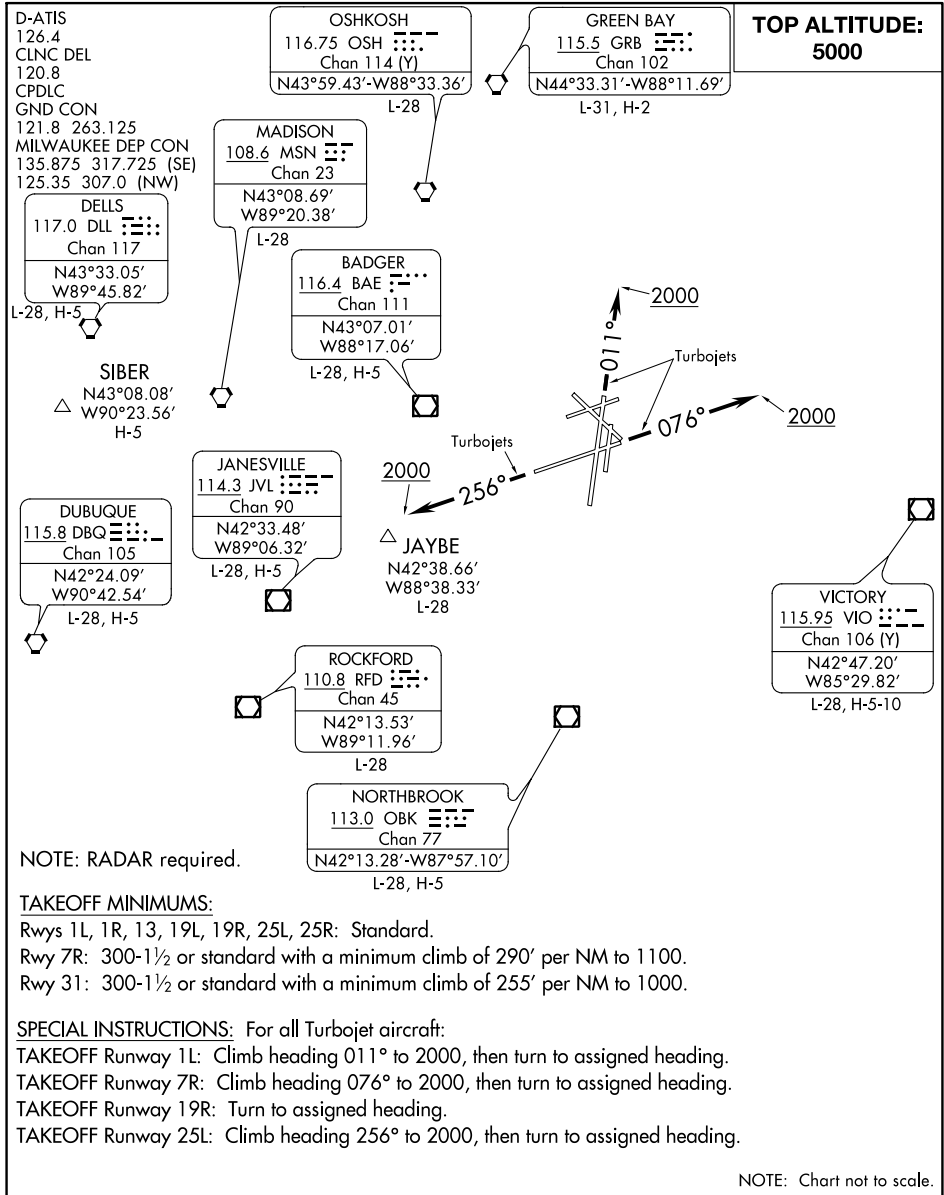


# MITCHELL SIX DEPARTURE

AL-262 (FAA)

GENERAL MITCHELL INTL (MKE)  
MILWAUKEE, WISCONSIN



EC-3, 25 FEB 2021 to 25 MAR 2021

EC-3, 25 FEB 2021 to 25 MAR 2021

NOTE: RADAR required.

### TAKEOFF MINIMUMS:

Rwys 1L, 1R, 13, 19L, 19R, 25L, 25R: Standard.

Rwy 7R: 300-1½ or standard with a minimum climb of 290' per NM to 1100.

Rwy 31: 300-1½ or standard with a minimum climb of 255' per NM to 1000.

### SPECIAL INSTRUCTIONS: For all Turbojet aircraft:

TAKEOFF Runway 1L: Climb heading 011° to 2000, then turn to assigned heading.

TAKEOFF Runway 7R: Climb heading 076° to 2000, then turn to assigned heading.

TAKEOFF Runway 19R: Turn to assigned heading.

TAKEOFF Runway 25L: Climb heading 256° to 2000, then turn to assigned heading.

NOTE: Chart not to scale.

### DEPARTURE ROUTE DESCRIPTION

All aircraft expect RADAR vectors to join filed/assigned route. Maintain 5000 or assigned lower altitude. Expect clearance to requested altitude/flight level ten minutes after departure.

# MITCHELL SIX DEPARTURE