

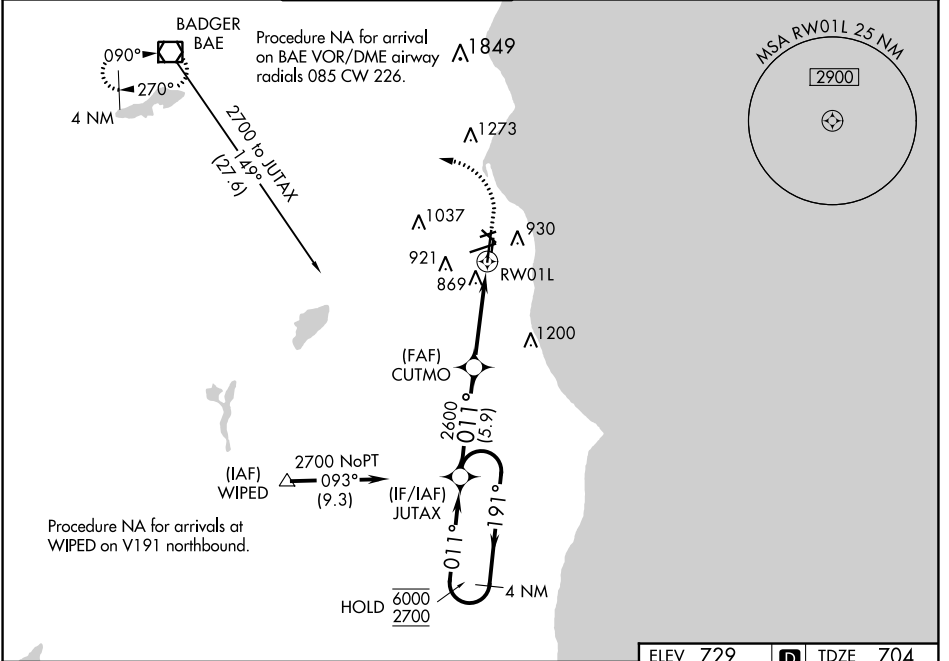
WAAS CH 45742 W01A	APP CRS 011°	Rwy Idg TDZE 704 Apt Elev 729	9080
--	------------------------	---	-------------

RNAV (GPS) RWY 1L

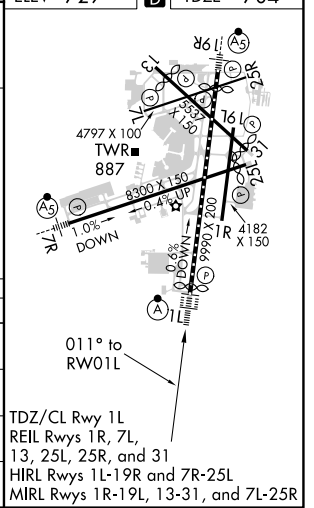
GENERAL MITCHELL INTL (MKE)

RNP APCH		ALSF-2	MISSED APPROACH: Climb to 1130 then climbing left turn to 2900 direct BAE VOR/DME and hold.
<p>▼ For uncompensated Baro-VNAV systems, LNAV/VNAV NA below -19°C (2°F) or above 54°C (130°F). For inop ALS increase LNAV/VNAV all Cats visibility to RVR 6000, increase LNAV Cat C/D visibility to RVR 6000.</p>			

D-ATIS 126.4	MILWAUKEE APP CON 126.5 307.0	MILWAUKEE TOWER 124.575 269.05	GND CON 121.8 263.125	CLNC DEL 120.8	CPDLC
------------------------	---	--	---------------------------------	--------------------------	-------



VGSi and RNAV glidepath not coincident (VGSi Angle 3.00/TCH 72).		1130	2900	BAE
4 NM Holding Pattern JUTAX		*LNAV only.		
6000 ← 191°		CUTMO		
2700 → 011°		*1.1 NM to RW01L		
GP 3.00° TCH 56		RW01L		
5.9 NM		4.7 NM		
		1.1 NM		
CATEGORY	A	B	C	D
LPV DA		904/18	200 (200-½)	
LNAV/VNAV DA		1120/40	416 (400-1)	
LNAV MDA	1120/24	416 (400-½)	1120/40	416 (400-¾)
C CIRCLING	1240-1	511 (600-1)	1240-1½ 511 (600-1½)	1360-2 631 (700-2)



EC-3, 25 FEB 2021 to 25 MAR 2021

EC-3, 25 FEB 2021 to 25 MAR 2021