

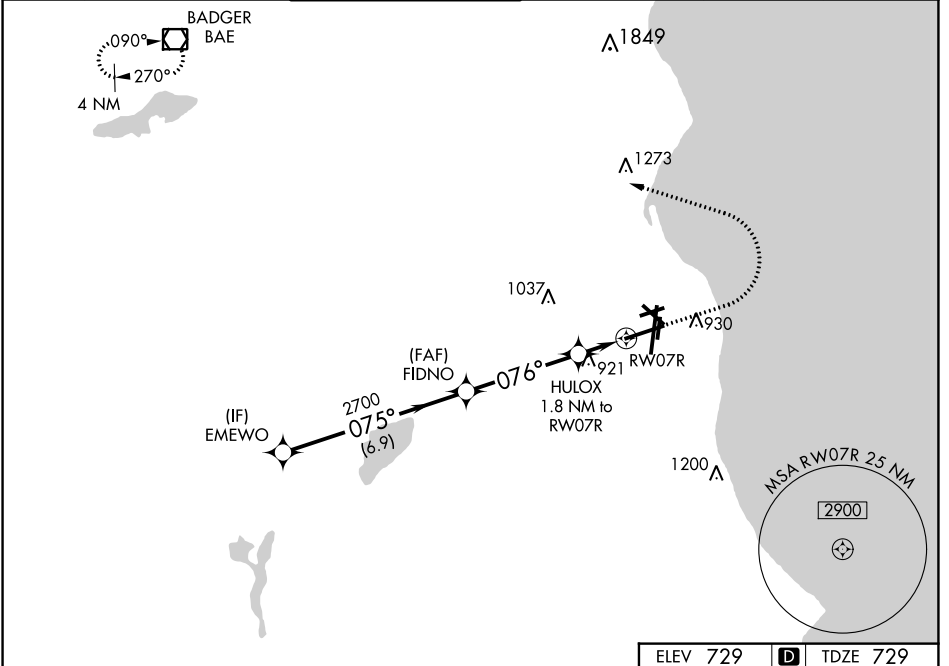
WAAS CH <b>69226</b> <b>W07A</b>	APP CRS <b>076°</b>	Rwy Idg TDZE Apt Elev	<b>8012</b> <b>729</b> <b>729</b>
----------------------------------------	------------------------	-----------------------------	-----------------------------------------

# RNAV (GPS) Z RWY 7R

GENERAL MITCHELL INTL (MKE)

<p>For uncompensated Baro-VNAV systems, LNAV/VNAV NA below -20°C (-4°F) or above 54°C (130°F). DME/DME RNP-0.3 NA. # RVR 1800 authorized with use of FD or AP or HUD to DA.</p>	<p>MALSR</p>	<p>MISSED APPROACH: Climb to 900 then climbing left turn to 3000 direct BAE VOR/DME and hold.</p>
	<p>2900</p>	

D-ATIS <b>126.4</b>	MILWAUKEE APP CON <b>126.5 307.0</b>	MILWAUKEE TOWER <b>124.575 269.05</b>	GND CON <b>121.8 263.125</b>	CLNC DEL <b>120.8</b>	CPDLC
------------------------	-----------------------------------------	------------------------------------------	---------------------------------	--------------------------	-------



EC-3, 25 FEB 2021 to 25 MAR 2021

EC-3, 25 FEB 2021 to 25 MAR 2021

<p>VGSI and RNAV glidepath not coincident (VGSI Angle 3.00/TCH 63).</p>		<p>2900</p> <p>3000</p> <p>BAE</p>		
<p>EMEWO</p> <p>2900</p> <p>075°</p> <p>2700</p> <p>076°</p> <p>FIDNO</p> <p>2700</p> <p>HULOX</p> <p>1.8 NM to RWY 7R</p> <p>* 1.2 NM to RWY 7R</p> <p>RWY 7R</p> <p>* 1340</p> <p>GP 3.00°</p> <p>TCH 50</p> <p>6.9 NM</p> <p>4.2 NM</p> <p>0.6 NM</p> <p>1.2 NM</p> <p>* LNAV only.</p>				
CATEGORY	A	B	C	D
LPV DA #	929/24 200 (200-½)			
LNAV/VNAV DA	1232-1¼ 503 (600-1¼)			
LNAV MDA	1180/24	451 (500-½)	1180/45	451 (500-¾)
CIRCLING	1240-1	511 (600-1)	1240-1½	1360-2
			511 (600-1½)	631 (700-2)