

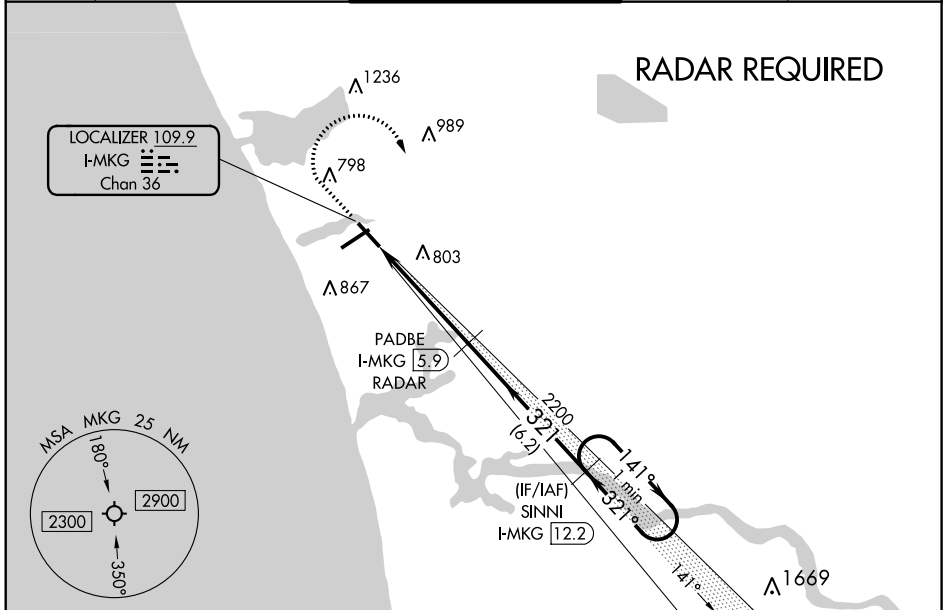
LOC/DME I-MKG 109.9 Chan 36	APP CRS 321°	Rwy Ldg TDZE 629 Apt Elev 629
---	------------------------	---

ILS or LOC RWY 32

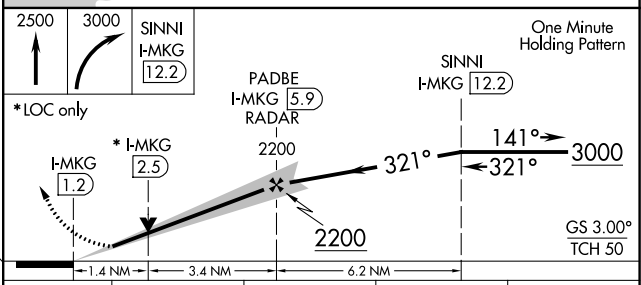
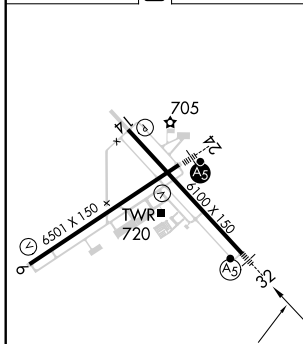
MUSKEGON COUNTY (MKG)

DME or RADAR required. RNAV 1-GPS required.		MALS R	MISSED APPROACH: Climb to 2500 then climbing right turn to 3000 direct SINNI and hold.	
<p>⚠ For inop ALS, increase S-LOC Cat C/D visibility to 1 3/8 SM. **RVR 1800 authorized with use of FD or AP or HUD to DA.</p>				

ATIS 124.3	GREAT LAKES APP CON * 119.8 290.35 (North) 133.825 290.35 (South)	MUSKEGON TOWER * 126.25 (CTAF) 0 343.725	GND CON 121.6	UNICOM 122.95
----------------------	---	---	-------------------------	-------------------------



ELEV 629	D	TDZE 629
-----------------	----------	-----------------



CATEGORY	A	B	C	D
S-ILS 32 **	829/24 200 (200-1/2)			
S-LOC 32	1120/24 491 (500-1/2)	1120/50 491 (500-1)		
C CIRCLING	1120-1 491 (500-1)	1180-1 551 (600-1)	1200-1 571 (600-1 1/2)	1200-2 571 (600-2)

EC-1, 25 FEB 2021 to 25 MAR 2021

EC-1, 25 FEB 2021 to 25 MAR 2021