

RNAV (GPS) RWY 2

MC KELLAR-SIPES RGNL (MKL)

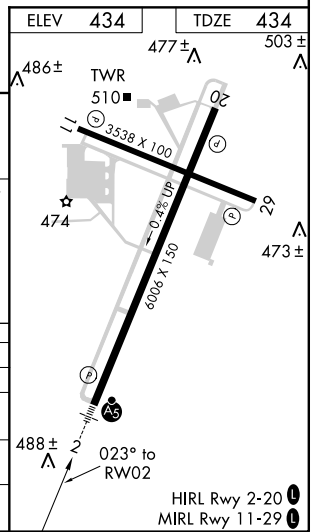
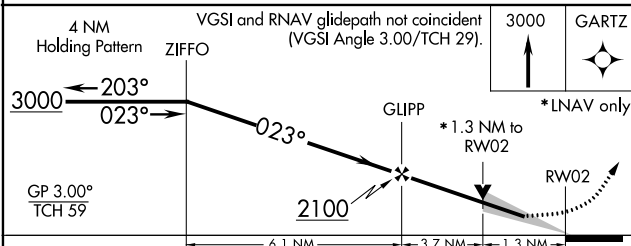
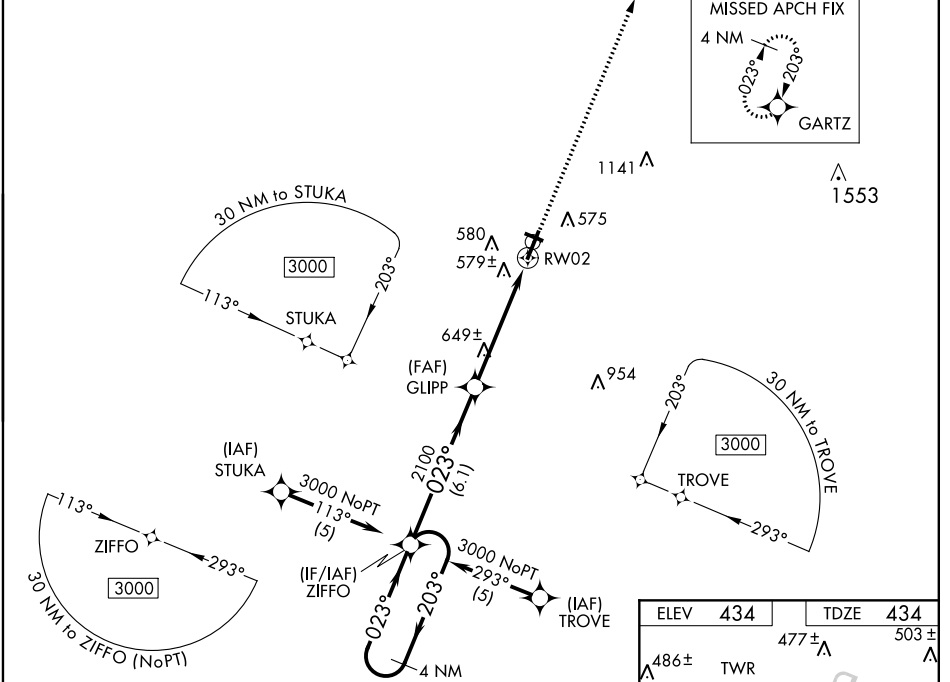
WAAS CH 93511 W02A	APP CRS 023°	Rwy Idg 6006 TDZE 434 Apt Elev 434
--	------------------------	---

⚠ For uncompensated Baro-VNAV systems, LNAV/VNAV NA below -15°C (5°F) or above 48°C (118°F). DME/DME RNP-0.3 NA. When local altimeter setting not received, use Dyersburg altimeter setting and increase all DA 92 feet and all MDA 100 feet; increase LNAV/VNAV all Cats visibility 1/2 mile, and LNAV Cat C and D visibility 1/4 mile. For inoperative MALS/R when using Dyersburg altimeter setting, increase LPV all Cats visibility to 1 mile. VDP and Baro-VNAV NA when using Dyersburg altimeter setting. Final Landing: Rwy 29 NA.

MALS/R

MISSED APPROACH:
Climb to 3000 direct GARTZ and hold.

ASOS 119.325	MEMPHIS CENTER 134.65 316.15	JACKSON TOWER ★ 127.15 (CTAF) 249.95	GND CON 120.9	UNICOM 122.95
------------------------	--	--	-------------------------	-------------------------



CATEGORY	A	B	C	D
LPV DA	634-1/2		200 (200-1/2)	
LNAV/VNAV DA	887-1		453 (500-1)	
LNAV MDA	900-1/2 466 (500-1/2)		900-1 466 (500-1)	
CIRCLING	900-1 466 (500-1)		1000-2 566 (600-2)	

SE-1, 25 FEB 2021 to 25 MAR 2021

SE-1, 25 FEB 2021 to 25 MAR 2021