

WAAS CH 40312 W20A	APP CRS 203°	Rwy Idg 6006 TDZE 418 Apt Elev 434
--	------------------------	---

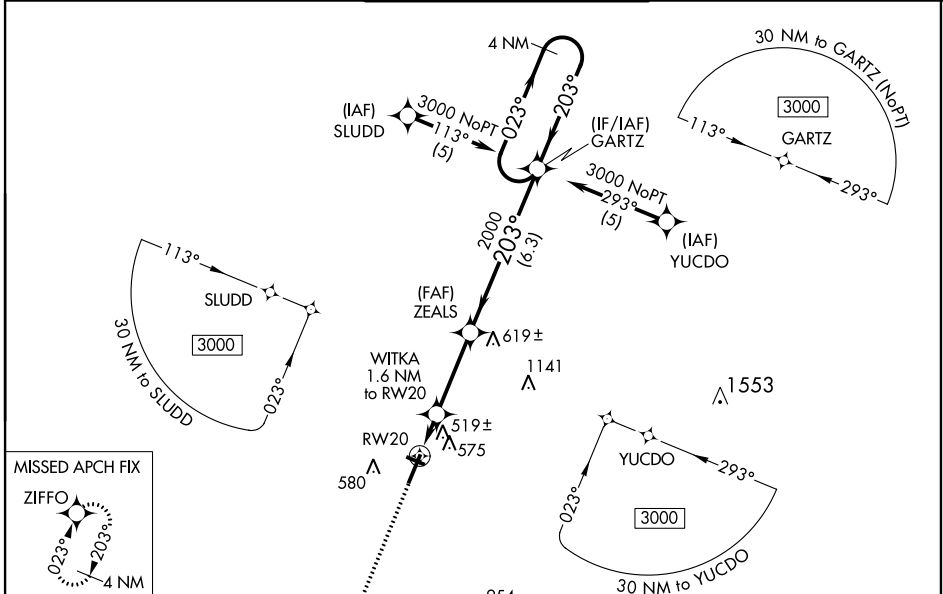
RNAV (GPS) RWY 20

MC KELLAR-SIPES RGNL (MKL)

⚠ DME/DME RNP-0.3 NA. Helicopter visibility reduction below ¼ SM NA. For uncompensated Baro-VNAV systems, LNAV/VNAV NA below -15°C (5°F) or above 48°C (118°F). Baro-VNAV NA when using Dyersburg altimeter setting. When local altimeter setting not received, use Dyersburg altimeter setting and increase all DA 92 feet and all MDA 100 feet; and increase LPV all Cats visibility ½ mile, LNAV/VNAV ¼ mile, LNAV Cat C and D ¼ mile. Night Landing: Rwy 29 NA.

⚠ MISSED APPROACH: Climb to 3000 direct ZIFFO and hold.

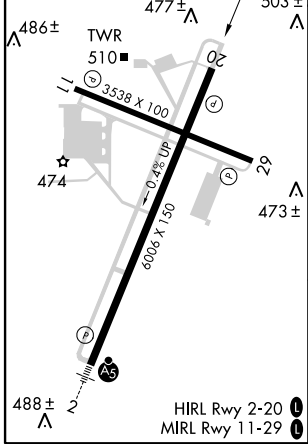
ASOS 119.325	MEMPHIS CENTER 134.65 316.15	JACKSON TOWER ★ 127.15 (CTAF) 0 249.95	GND CON 120.9	UNICOM 122.95
------------------------	--	--	-------------------------	-------------------------



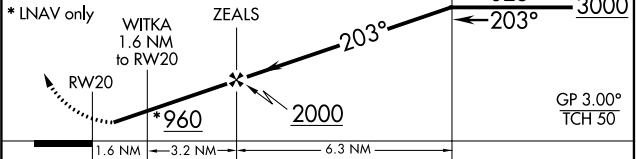
SE-1, 25 FEB 2021 to 25 MAR 2021

SE-1, 25 FEB 2021 to 25 MAR 2021

ELEV 434	TDZE 418
-----------------	-----------------



3000 ZIFFO VGSI and RNAV glidepath not coincident (VGSI Angle 3.00/TCH 47). 4 NM Holding Pattern GARTZ



CATEGORY	A	B	C	D
LPV DA		710-1	292 (300-1)	
LNAV/VNAV DA		818-1½	400 (400-1½)	
LNAV MDA		780-1	362 (400-1)	780-1¼ 362 (400-1¼)
CIRCLING	880-1 446 (500-1)	900-1 466 (500-1)	900-1½ 466 (500-1½)	1000-2 566 (600-2)