

WAAS CH <b>70607</b> W13A	APP CRS <b>129°</b>	Rwy Idg <b>7202</b> TDZE <b>607</b> Apt Elev <b>612</b>
---------------------------------	------------------------	---

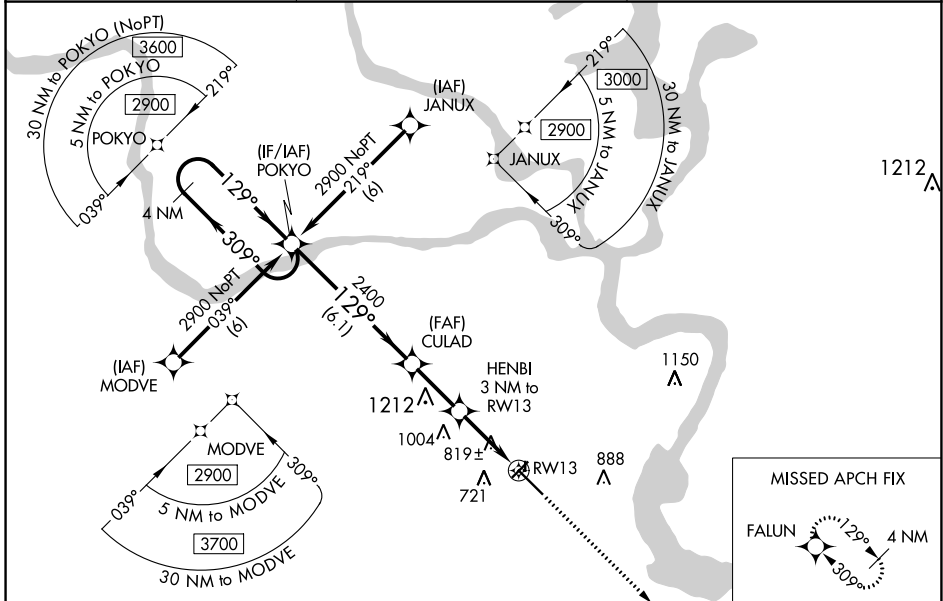
# RNAV (GPS) RWY 13

MUSKOGEE-DAVIS RGNL (MKO)

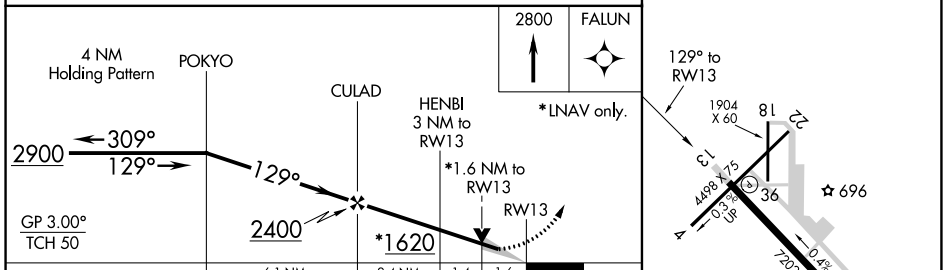
**⚠** For uncompensated Baro-VNAV systems, procedure NA below -16°C (4°F) or above 47°C (116°F).  
**⚠** DME/DME RNP-0.3 NA. Baro-VNAV and VDP NA when using Tahlequah altimeter setting. When local altimeter setting not received, use Tahlequah altimeter setting and increase all DA 92 feet; increase LPV visibility ½ mile all Cats. Increase LNAV/VNAV visibility ¼ mile all Cats, increase all MDA 100 feet and LNAV Cat C/D/E visibility ½ mile, Circling visibility Cat C/D ¼ mile. Circling Rwy 4, 18, 22, 36 NA at night. Rwy 4, 18, 22, 36 helicopter visibility reduction below 1 SM NA.

MISSED APPROACH: Climb to 2800 direct FALUN and hold.

ASOS <b>135.025</b>	FORT WORTH CENTER <b>132.2 338.35</b>	UNICOM <b>122.8 (CTAF) 0</b>
------------------------	--	---------------------------------



ELEV 612	TDZE 607
----------	----------



CATEGORY	A	B	C	D	E
LPV DA		857-¾	250 (300-¾)		
LNAV/VNAV DA		1142-2	535 (600-2)		
LNAV MDA	1180-1	573 (600-1)	1180-1½ 573 (600-1½)	1180-1¾ 573 (600-1¾)	1180-2 573 (600-2)
CIRCLING	1180-1	568 (600-1)	1180-1½ 568 (600-1½)	1200-2 588 (600-2)	1580-3 968 (1000-3)

SC-1, 25 FEB 2021 to 25 MAR 2021

SC-1, 25 FEB 2021 to 25 MAR 2021