

APP CRS	Rwy Idg	4498
219°	TDZE	607
	Apt Elev	612

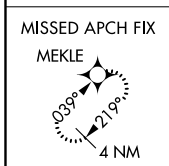
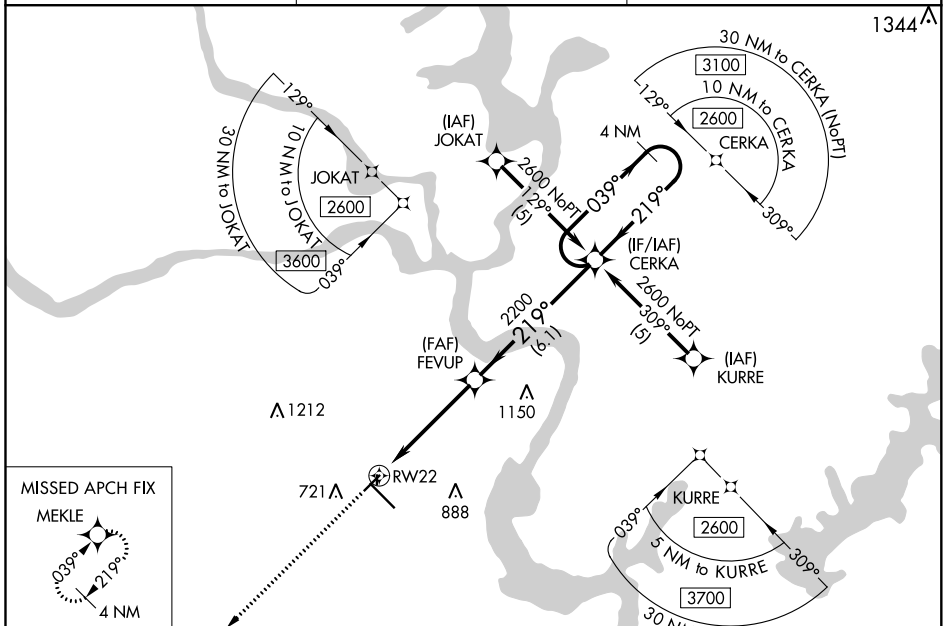
RNAV (GPS) RWY 22

MUSKOGEE-DAVIS RGNL (MKO)

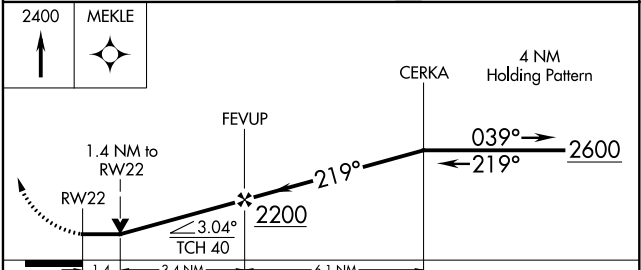
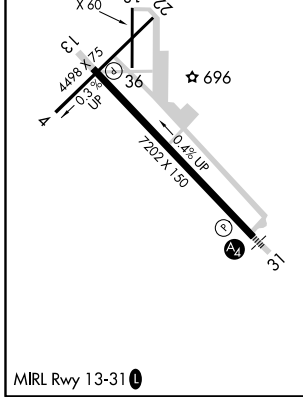
▼ DME/DME RNP-0.3 NA. When local altimeter setting not received, use Tahlequah altimeter setting and increase all MDA 100 feet, increase LNAV Cat C visibility ¼ mile, Cat D visibility ½ mile, increase Circling Cat C visibility ¼ mile. VDP NA when using Tahlequah Muni altimeter setting. Straight-in Rwy 22 NA at night, Circling Rwy 4, 18, 22, 36 NA at night. Rwy 4, 18, 22, 36 helicopter visibility reduction below 1 SM NA.

MISSED APPROACH:
Climb to 2400 direct MEKLE and hold.

ASOS 135.025	FORT WORTH CENTER 132.2 338.35	UNICOM 122.8 (CTAF) 0
------------------------	--	---------------------------------



ELEV 612	TDZE 607
----------	----------



CATEGORY	A	B	C	D
LNAV MDA	1100-1	493 (500-1)	1100-1½	493 (500-1½)
CIRCLING	1120-1 508 (600-1)	1160-1 548 (600-1)	1180-1½ 568 (600-1½)	1200-2 588 (600-2)

SC-1, 25 FEB 2021 to 25 MAR 2021

SC-1, 25 FEB 2021 to 25 MAR 2021