

WAAS CH <b>42807</b> <b>W31B</b>	APP CRS <b>309°</b>	Rwy Idg <b>7202</b> TDZE <b>593</b> Apt Elev <b>612</b>
--	------------------------	---

# RNAV (GPS) RWY 31

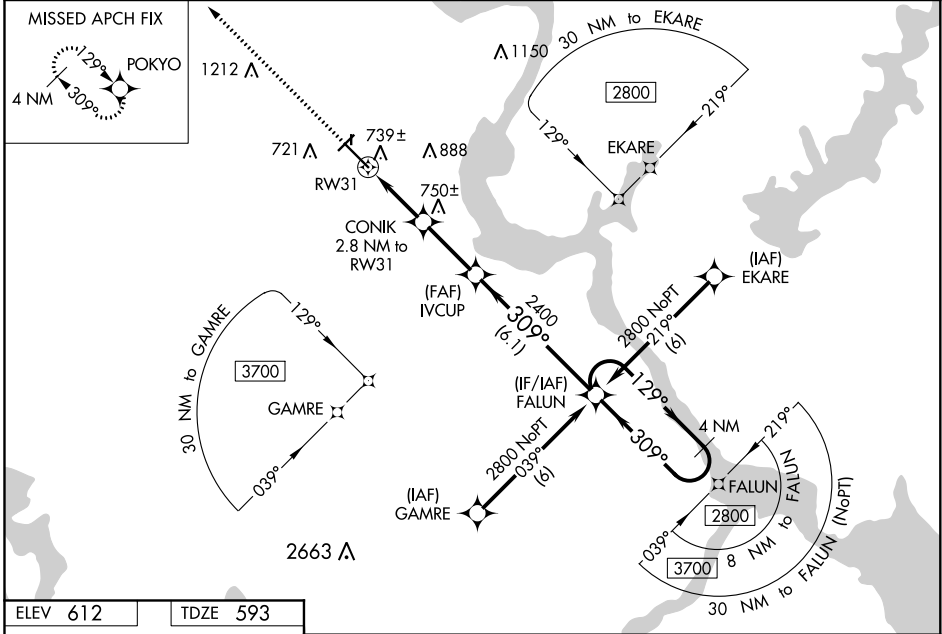
MUSKOGEE-DAVIS RGNL (MKO)

⚠ For uncompensated Baro-VNAV systems, procedure NA below -16°C (4°F) or above 47°C (116°F). Baro-VNAV and VDP NA when using Tahlequah altimeter setting. When local altimeter setting not received, use Tahlequah altimeter setting and increase all DA 92 feet, visibilities ¼ mile; increase all MDA 100 feet, LNAV visibilities Cat C/D/E ¼ mile, and Circling Cat C ¼ mile. Inop table does not apply to LNAV/VNAV Cat A/B/C and LNAV Cat C. Circling Rwy 4, 18, 22, 36 NA at night. Rwy 4, 18, 22, 36 helicopter visibility reduction below 1 SM NA.



**MALS**  
**MISSED APPROACH:**  
Climb to 2900 direct POKYO and hold.

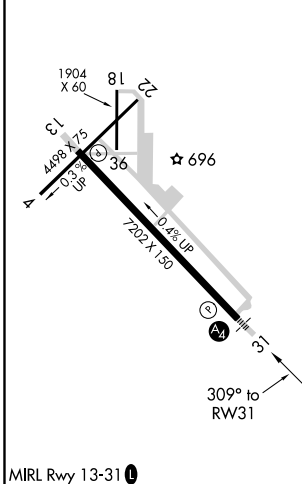
ASOS <b>135.025</b>	FORT WORTH CENTER <b>132.2 338.35</b>	UNICOM <b>122.8 (CTAF)</b>
------------------------	--	-------------------------------



SC-1, 25 FEB 2021 to 25 MAR 2021

SC-1, 25 FEB 2021 to 25 MAR 2021

ELEV <b>612</b>	TDZE <b>593</b>
-----------------	-----------------



2900 POKYO					
*LNAV only.					
CONIK 2.8 NM to RW31					
*1.2 NM to RW31					
IVCUP					
FALUN					
4 NM Holding Pattern					
129° → 2800					
← 309°					
GP 3.00° TCH 53					
1.2 NM	1.6 NM	2.7 NM	6.1 NM		
CATEGORY	A	B	C	D	E
LPV DA		843-1	250 (300-1)		
LNAV/VNAV DA		1139-2	546 (600-2)		
LNAV MDA	1000-¾	407 (400-¾)	1000-¼	407 (400-¼)	1000-½
					407 (400-½)
CIRCLING	1120-1	1160-1	1180-½	1200-2	1580-3
	508 (600-1)	548 (600-1)	568 (600-½)	588 (600-2)	968 (1000-3)