

WAAS CH <b>63210</b> <b>W05A</b>	APP CRS <b>050°</b>	Rwy Idg TDZE <b>73</b> Apt Elev <b>73</b>	<b>4351</b>
--	------------------------	---	-------------

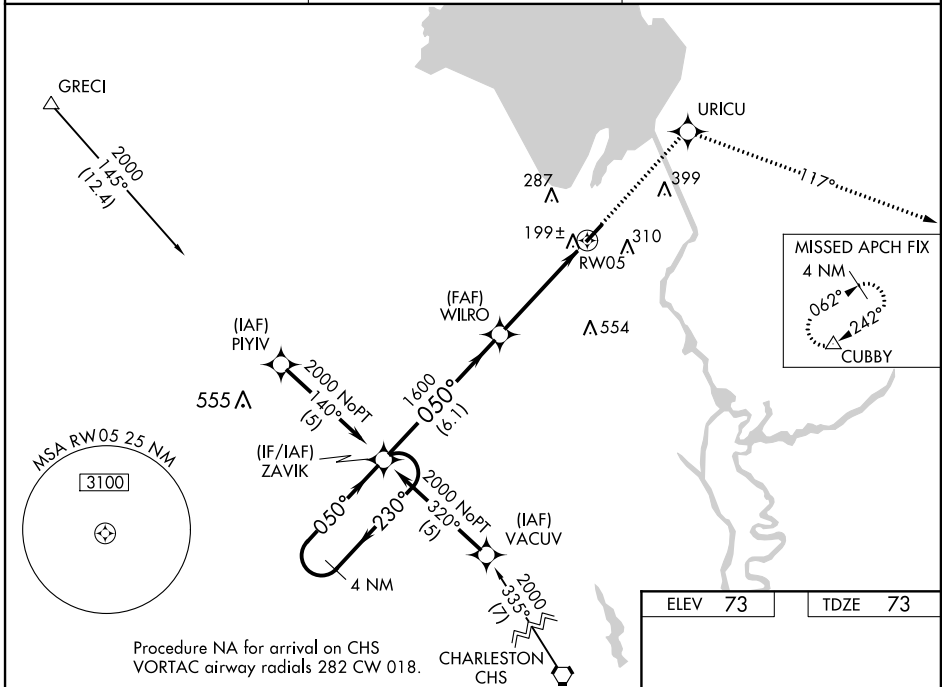
# RNAV (GPS) RWY 5

BERKELEY COUNTY (MKS)

▼  
▲ NA  
Circling to Rwy 23 NA at night. Baro-VNAV NA when using Charleston AFB/Intl altimeter setting. For uncompensated Baro-VNAV systems, LNAV/VNAV NA below -15° C (5° F) or above 48° C (118° F). DME/DME RNP-0.3 NA. Visibility reduction by helicopters NA. When local altimeter setting not received, use Charleston AFB/Intl altimeter setting and increase LPV DA to 451 feet; LNAV/VNAV DA to 513 feet, and all MDA 60 feet; increase LNAV and Circling Cat. C visibility 1/4 mile. VDP NA when using Charleston AFB/Intl altimeter setting.

MISSED APPROACH: Climb to 2000 direct URICU and via 117° track to CUBBY and hold.

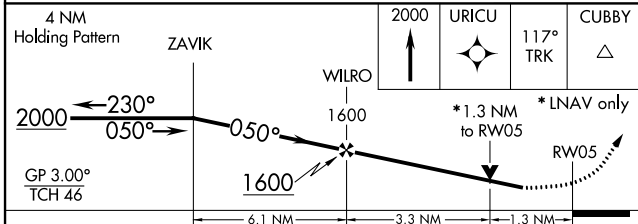
AWOS-3 <b>119.175</b>	CHARLESTON APP CON <b>119.3 379.925</b>	UNICOM <b>123.05 (CTAF)</b>
--------------------------	--	--------------------------------



SE-2, 25 FEB 2021 to 25 MAR 2021

SE-2, 25 FEB 2021 to 25 MAR 2021

ELEV 73	TDZE 73
---------	---------



CATEGORY	A	B	C	D
LPV DA		407-1¼	334 (400-1¼)	
LNAV/VNAV DA		469-1½	396 (400-1½)	
LNAV MDA	520-1	447 (500-1)	520-1¼ 447 (500-1¼)	520-1½ 447 (500-1½)
CIRCLING	520-1 447 (500-1)	620-1 547 (600-1)	620-1½ 547 (600-1½)	640-2 567 (600-2)

