

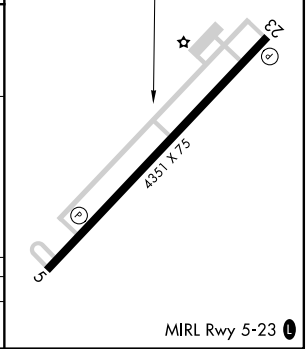
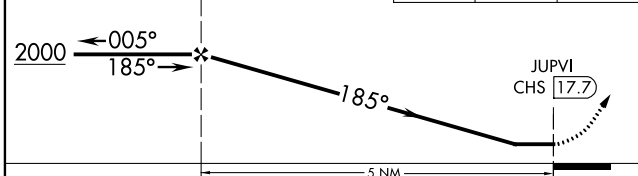
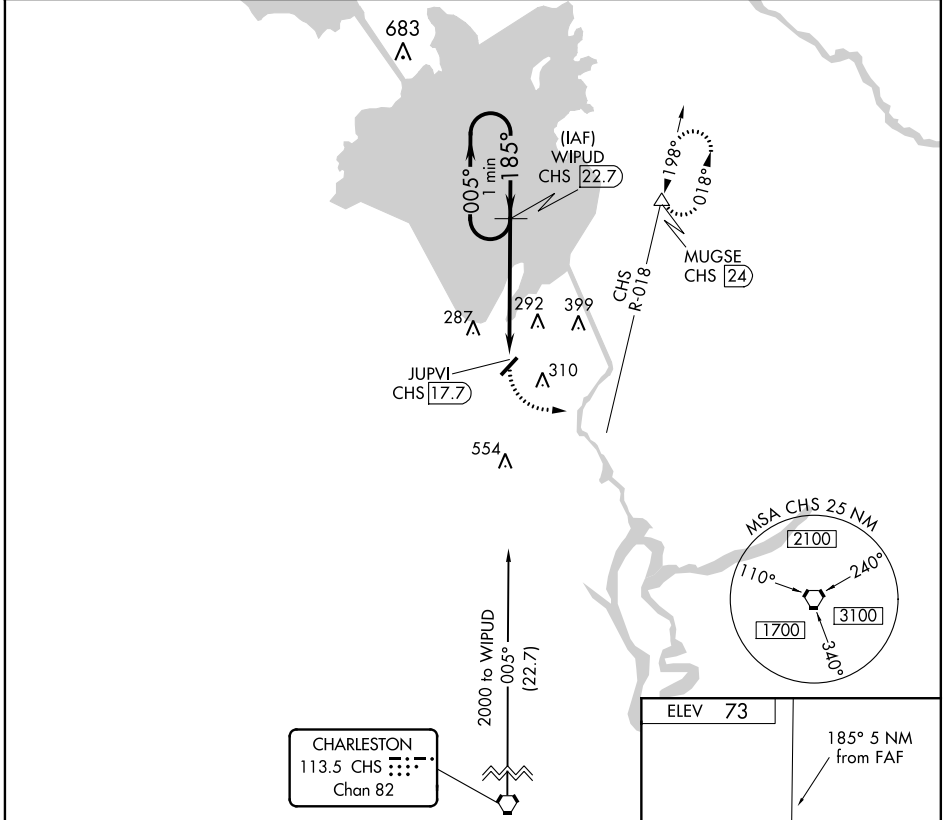
VORTAC CHS 113.5 Chan 82	APP CRS 185°	Rwy Idg TDZE Apt Elev	N/A N/A 73
--	------------------------	-----------------------------	---------------------------------------

VOR/DME-A
BERKELEY COUNTY (MKS)

NA Procedure NA at night. When local altimeter setting not received, use Charleston AFB/Intl altimeter setting and increase all MDA 60 feet and Cat C visibility ¼ mile. Helicopter visibility reduction below 1 SM NA.

MISSED APPROACH: Climbing left turn to 2000 via heading 050° and CHS R-018 to MUGSE/CHS 24 DME and hold.

AWOS-3 119.175	CHARLESTON APP CON 119.3 379.925	UNICOM 123.05 (CTAF)
--------------------------	--	--------------------------------



CATEGORY	A	B	C	D
CIRCLING	560-1 487 (500-1)	620-1 547 (600-1)	620-1½ 547 (600-1½)	640-2 567 (600-2)

SE-2, 25 FEB 2021 to 25 MAR 2021

SE-2, 25 FEB 2021 to 25 MAR 2021