

VORTAC AEX <b>116.1</b> Chan <b>108</b>	APP CRS <b>110°</b>	Rwy Idg TDZE Apt Elev <b>N/A</b> <b>N/A</b> <b>79</b>
---	------------------------	--

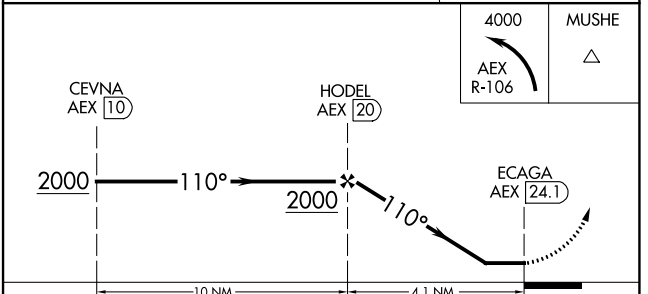
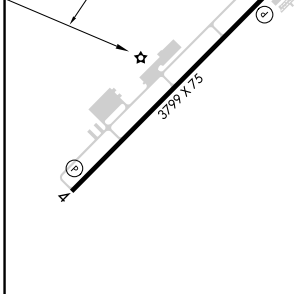
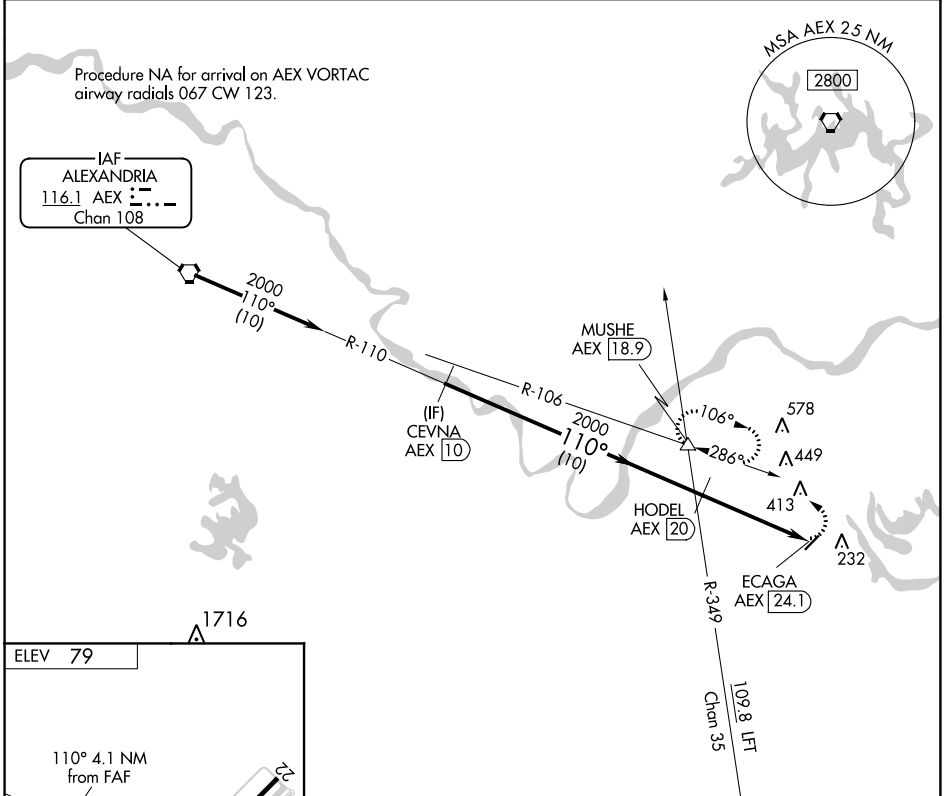
**VOR-A**  
MARKSVILLE MUNI (MKV)

DME required.

**NA** Circling Rwy 22 NA at night. Use Esler Rgnl altimeter setting.  
When not received, use Alexandria Intl altimeter setting.

MISSED APPROACH: Climbing left turn to 4000 on AEX VORTAC R-106 to MUSHE INT/AEX 18.9 DME and hold, continue climb-in-hold to 4000.

ESF ASOS <b>119,425</b>	POLK APP CON <b>125.4 302.2</b>	CTAF <b>122.9</b>
----------------------------	------------------------------------	----------------------



MIRL Rwy 4-22	REIL Rwy 4 and 22	CEVNA AEX (10)	HODEL AEX (20)	ECAGA AEX (24.1)	MUSHE AEX (18.9)
		10 NM		4.1 NM	
CATEGORY	A	B	C	D	
<b>C</b> CIRCLING	760-1 681 (700-1)	820-1¼ 741 (800-1¼)	NA		

SC-4, 25 FEB 2021 to 25 MAR 2021

SC-4, 25 FEB 2021 to 25 MAR 2021