

APP CRS	Rwy Idg	<b>5004</b>
<b>345°</b>	TDZE	<b>5039</b>
	Apt Elev	<b>5039</b>

# RNAV (GPS) RWY 34

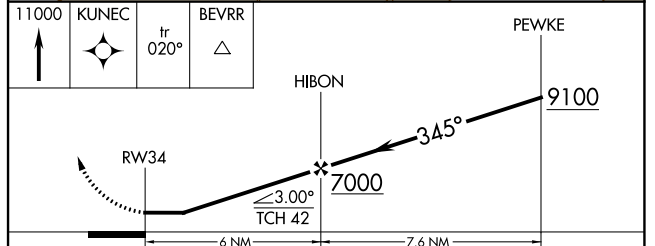
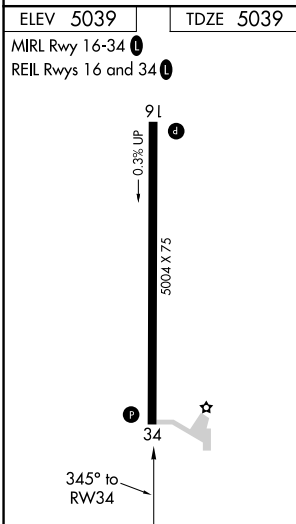
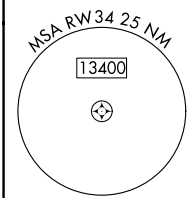
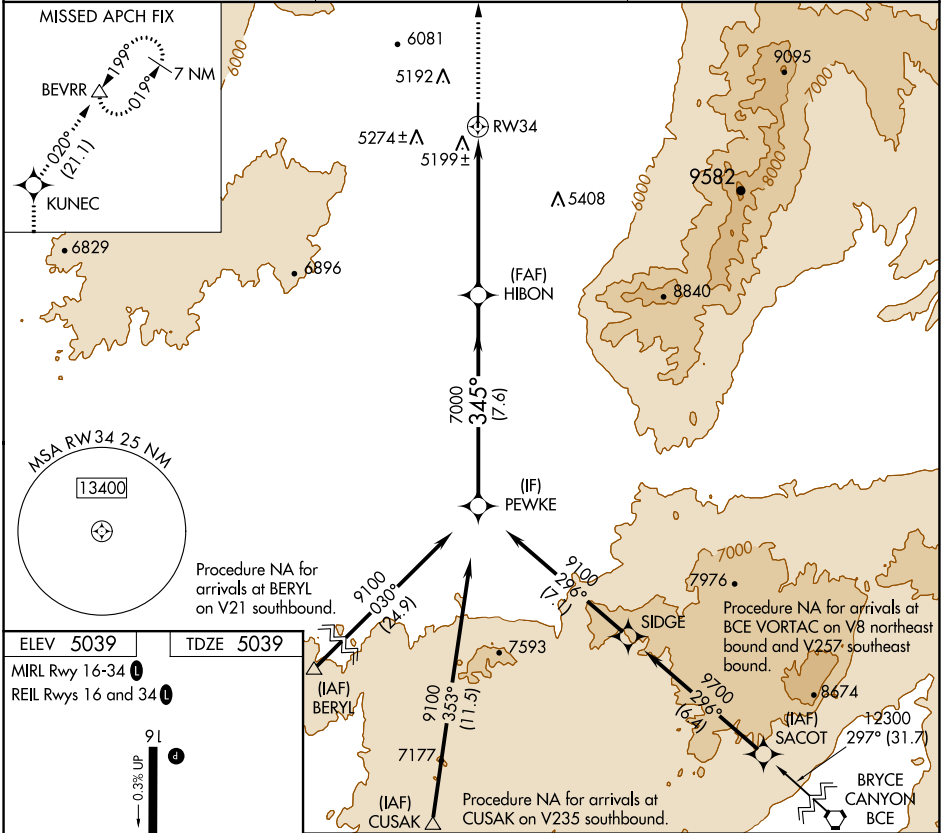
MILFORD MUNI/BEN AND JUDY BRISCOE FIELD (MLF)

RNP APCH.

**▽** When local altimeter setting not received, use Cedar City altimeter setting and increase all MDA 180 feet; increase LNAV Cat C/D visibility ½ mile.

**△** MISSED APPROACH: Climb to 11000 direct KUNEC and on track 020° to BEVRR and hold, continue climb-in-hold to 11000.

ASOS <b>135.025</b>	SALT LAKE CENTER <b>125.575 379.275</b>	UNICOM <b>122.8 (CTAF) 0</b>
------------------------	--	---------------------------------



CATEGORY	A	B	C	D
LNAV MDA	5460-1	421 (500-1)	5460-1¼	421 (500-1¼)

SW-4, 25 FEB 2021 to 25 MAR 2021

SW-4, 25 FEB 2021 to 25 MAR 2021