

|  |                        |  |            |
|--|------------------------|--|------------|
| VORTAC MLF<br><b>112.1</b><br>Chan <b>58</b> | APP CRS<br><b>344°</b> | Rwy Idg<br>TDZE<br>Apt Elev<br><b>5039</b> | N/A<br>N/A |
|--|------------------------|--|------------|

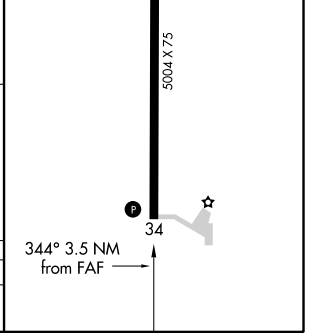
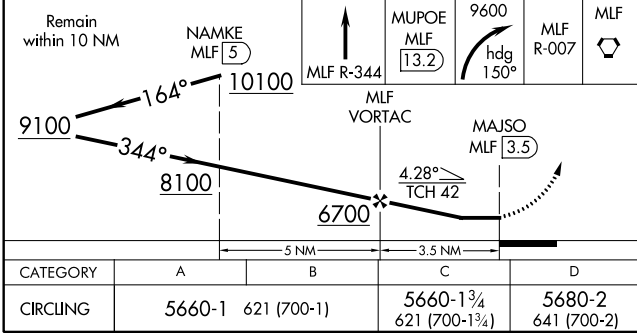
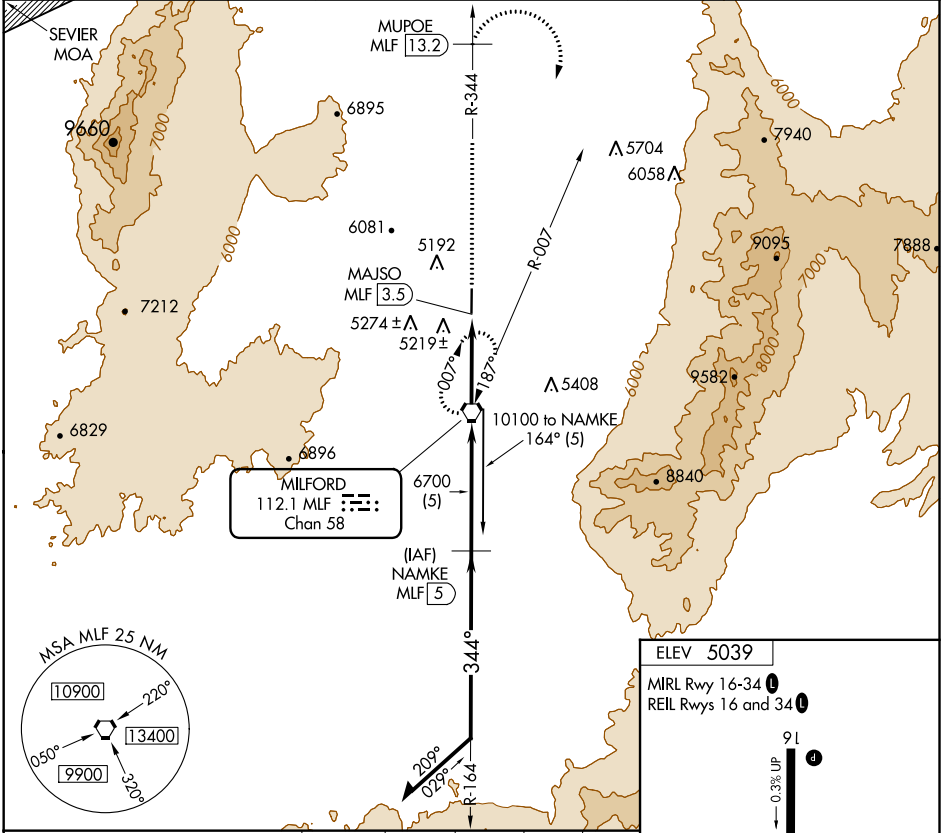
# VOR/DME-A

MILFORD MUNI/BEN AND JUDY BRISCOE FIELD (MLF)

**⚠** When local altimeter setting not received, use Cedar City altimeter setting and increase MDA 200 feet, and increase Cat C visibility ½ mile and Cat D visibility ¾ mile. When VGSI inop, procedure NA at night. Visibility reduction by helicopters NA.

**⚠** MISSED APPROACH: Climb on MLF VORTAC R-344 to MUPOE/MLF 13.2 DME then climbing right turn to 9600 on heading 150° and MLF VORTAC R-007 to MILFORD VORTAC and hold.

|                        |  |                                 |
|------------------------|--|---------------------------------|
| ASOS<br><b>135.025</b> | SALT LAKE CENTER<br><b>125.575 379.275</b> | UNICOM<br><b>122.8 (CTAF) 0</b> |
|------------------------|--|---------------------------------|



# VOR/DME-A

SW-4, 25 FEB 2021 to 25 MAR 2021

SW-4, 25 FEB 2021 to 25 MAR 2021