

WAAS CH 56240 W31A	APP CRS 306°	Rwy ldg TDZE 2627 Apt Elev 2630
--	------------------------	---

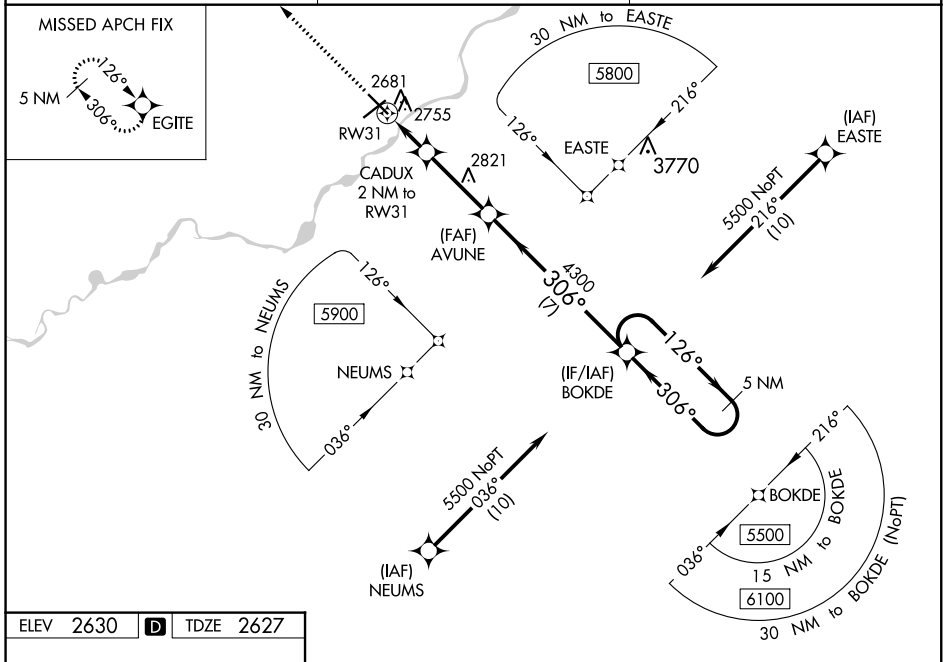
RNAV (GPS) RWY 31

FRANK WILEY FIELD (MILS)

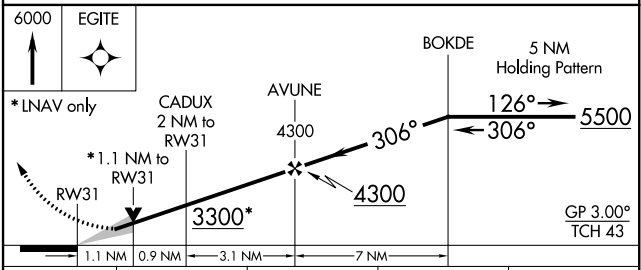
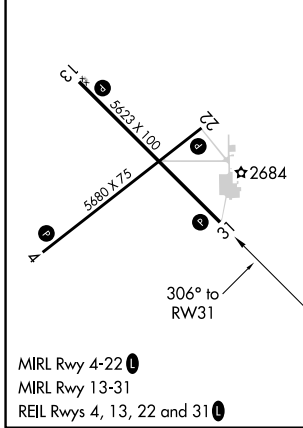
▼ For uncompensated Baro-VNAV systems, LNAV/VNAV NA below -24°C (-11°F) or above 54°C (130°F). Baro-VNAV and VDP NA when using Forsyth altimeter setting. DME/DME RNP-0.3 NA. When local altimeter setting not received, use Forsyth altimeter setting; increase LPV DA to 2965 and all visibility 1/8 mile, and increase LNAV/VNAV DA to 3005 and all visibility 1/4 mile. Increase all MDA 100 feet and all Cat C and D visibility 1/4 mile.

MISSED APPROACH: Climb to 6000 direct EGITE and hold, continue climb-in-hold to 6000.

ASOS 135.575	SALT LAKE CENTER 126.85 305.2	UNICOM 123.0 (CTAF) ①
------------------------	---	---------------------------------



ELEV 2630	D	TDZE 2627
-----------	----------	-----------



CATEGORY	A	B	C	D
LPV DA		2877-1	250 (300-1)	
LNAV/VNAV DA		2917-1	290 (300-1)	
LNAV MDA	3020-1	393 (400-1)	3020-1 1/8	393 (400-1 1/8)
C CIRCLING	3060-1 430 (500-1)	3100-1 470 (500-1)	3120-1 1/2 490 (500-1 1/2)	3320-2 1/4 690 (700-2 1/4)

NW-1, 25 FEB 2021 to 25 MAR 2021

NW-1, 25 FEB 2021 to 25 MAR 2021