

VOR/DME MLS 112.1 Chan 58	APP CRS 036°	Rwy Idg 5680 TDZE 2629 Apt Elev 2630
---	------------------------	---

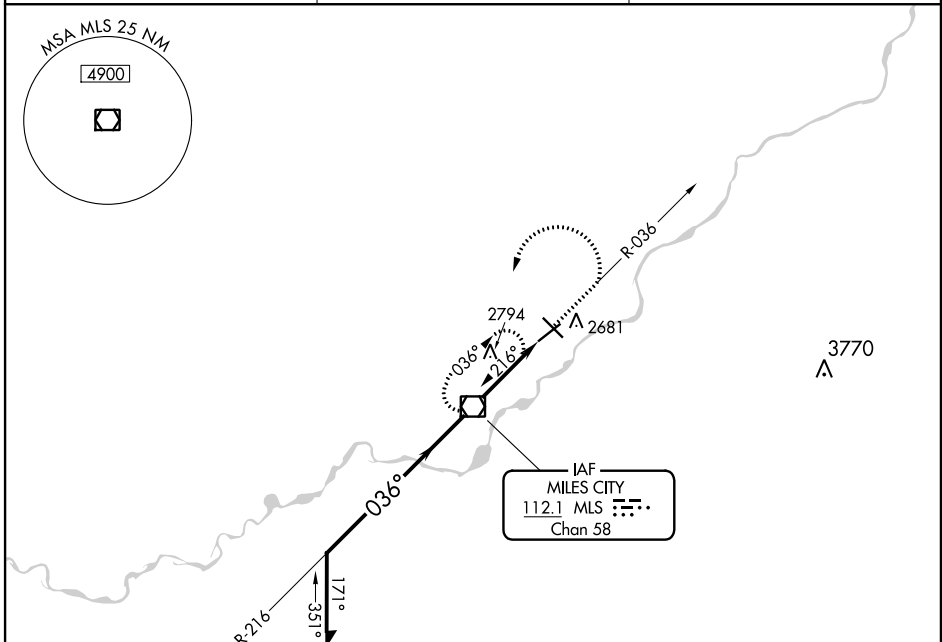
VOR RWY 4

FRANK WILEY FIELD (MLS)

⚠ When local altimeter setting not received, use Forsyth altimeter setting and increase all MDA 100 feet, and increase S-4 Cat C visibility ¼ mile.

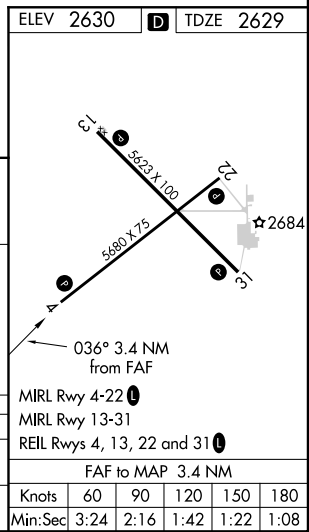
⚠ MISSED APPROACH: Climb to 4800 on MLS VOR/DME R-036 then climbing left turn to 6000 direct MLS VOR/DME and hold.

ASOS 135.575	SALT LAKE CENTER 126.85 305.2	UNICOM 123.0 (CTAF)
------------------------	---	-------------------------------



VGSI and descent angles not coincident (VGSI Angle 3.00/TCH 40).
Remain within 10 NM

4800	6000	MLS
MLS R-036		
2.1	3.4	



CATEGORY	A	B	C	D
S-4	3060-1	431 (500-1)	3060-1½ 431 (500-1½)	NA
C CIRCLING	3060-1 430 (500-1)	3100-1 470 (500-1)	3120-1½ 490 (500-1½)	NA

NW-1, 25 FEB 2021 to 25 MAR 2021

NW-1, 25 FEB 2021 to 25 MAR 2021