

WAAS CH <b>53628</b> <b>W29A</b>	APP CRS <b>287°</b>	Rwy Idg TDZE Apt Elev	<b>4713</b> <b>408</b> <b>408</b>
--	------------------------	-----------------------------	---

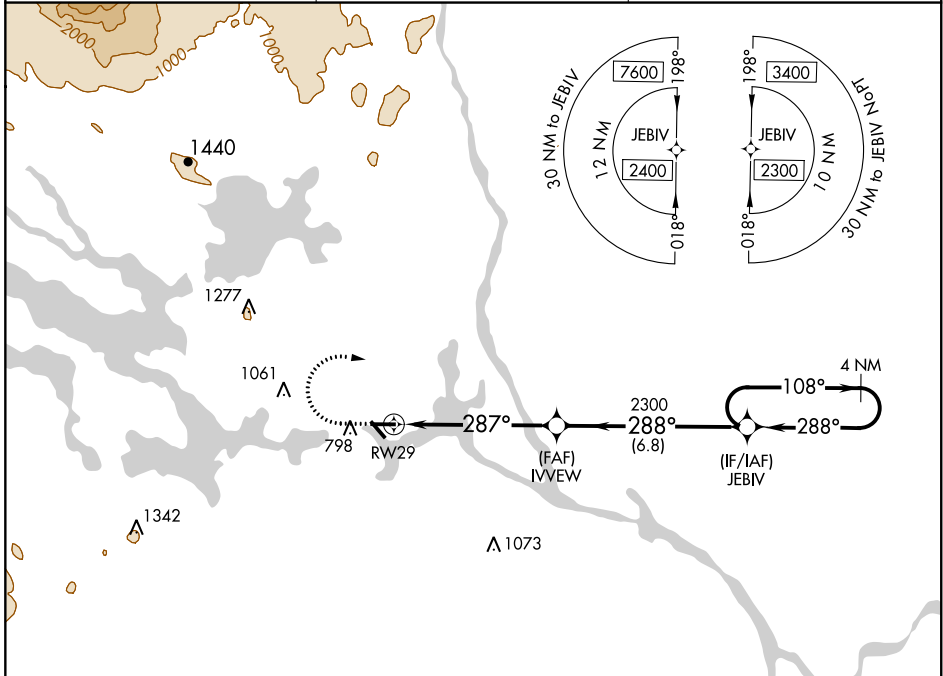
# RNAV (GPS) RWY 29

MILLINOCKET MUNI (MLT)

**Baro-VNAV NA** when using Houlton altimeter setting. For uncompensated Baro-VNAV systems, LNAV/VNAV NA below -15°C (5°F) or above 41°C (105°F). DME/DME RNP-0.3 NA. Helicopter visibility reduction below ¼ SM NA. When local altimeter setting not received, use Houlton altimeter setting and increase all DA and all MDA 120 feet; increase LPV and LNAV/VNAV all Cats and LNAV Cat C/D visibility ¾ mile, and Circling Cat A/B visibility ½ mile and Cat C/D visibility ½ mile. Night landing: Rwy 11, ¾ NA.

**MISSED APPROACH:** Climb to 920 then climbing right turn to 2300 direct JEBIV and hold.

ASOS <b>135.225</b>	BOSTON CENTER <b>120.25 346.4</b>	UNICOM <b>122.8 (CTAF)</b>
------------------------	--------------------------------------	-------------------------------



NE-1, 25 FEB 2021 to 25 MAR 2021

NE-1, 25 FEB 2021 to 25 MAR 2021

ELEV 408	TDZE 408	920	2300	JEBIV
----------	----------	-----	------	-------

REIL Rwy 29  
MIRL Rwy 11-29

**\* LNAV only**

IVVEV 2300  
JEBIV 2300

1.5 NM to RWY 29  
4.3 NM  
6.8 NM

287°  
288°  
108°

4 NM Holding Pattern

GP 3.00°  
TCH 5T

CATEGORY	A	B	C	D
LPV DA		697-1	289 (300-1)	
LNAV/VNAV DA		815-1 1/8	407 (400-1 1/8)	
LNAV MDA	920-1	512 (600-1)	920-1 1/2	512 (600-1 1/2)
CIRCLING	1100-1	692 (700-1)	1100-2 692 (700-2)	1100-2 1/4 692 (700-2 1/4)