

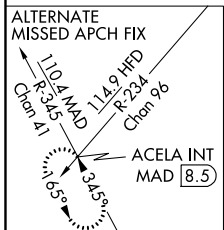
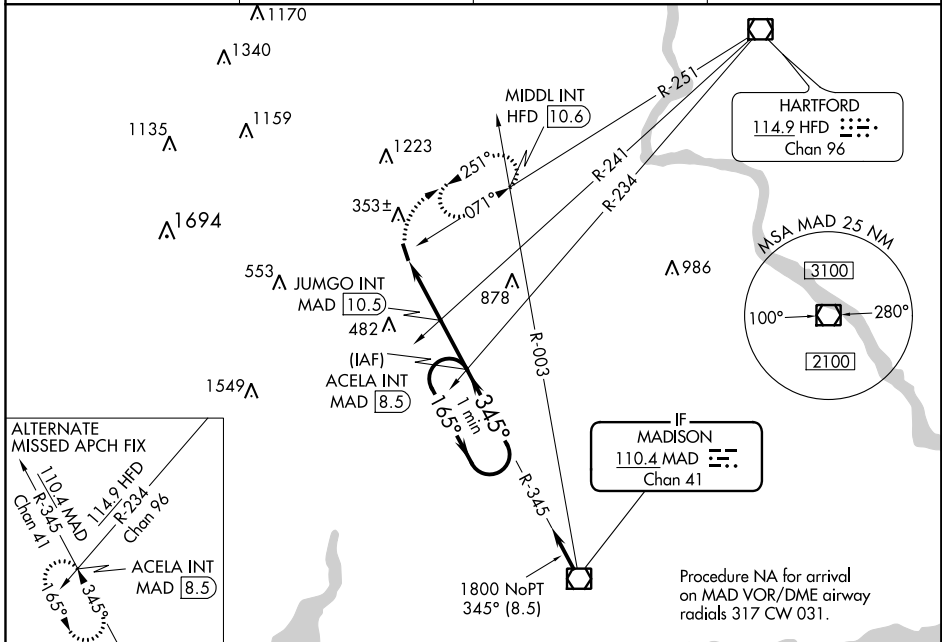
| | | | |
|-------------|---------|----------|------|
| VOR/DME MAD | APP CRS | Rwy Idg | 3100 |
| 110.4 | 345° | TDZE | 99 |
| Chan 41 | | Apt Elev | 103 |

VOR RWY 36

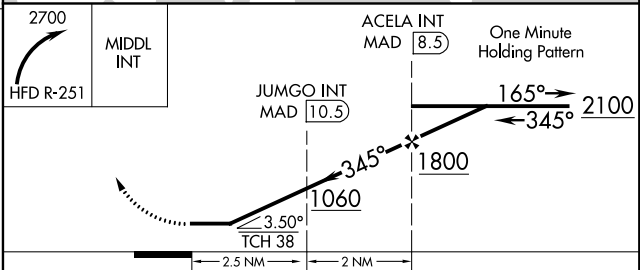
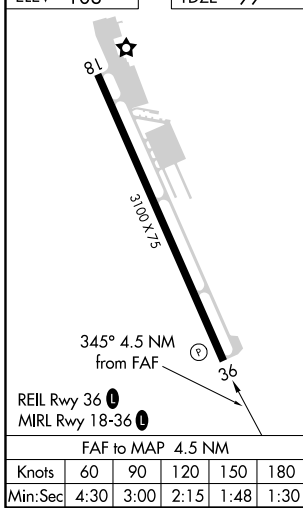
MERIDEN MARKHAM MUNI (MMK)

▼ Rwy 36 helicopter visibility reduction below 1 SM NA. Procedure NA at night.
▲ MISSED APPROACH: Climbing right turn to 2700 on HFD VOR/DME R-251 to MIDL INT/HFD 10.6 DME and hold, continue climb-in-hold to 2700.

| | | | |
|---------|----------------|----------|------------------------|
| ASOS | YANKEE APP CON | CLNC DEL | UNICOM |
| 134.925 | 127.8 269.325 | 120.65 | 123.05 (CTAF) 📻 |



| | |
|----------|---------|
| ELEV 103 | TDZE 99 |
|----------|---------|



| CATEGORY | A | B | C | D |
|---|--------------------------|--------------------------|---|----|
| S-36 | 1060-1¼ 961 (1000-1½) | 1060-1½ 961 (1000-1½) | | NA |
| C CIRCLING | 1060-1¼ 957 (1000-1½) | 1060-1½ 957 (1000-1½) | | NA |
| JUMGO FIX MINIMUMS (DUAL VOR RECEIVERS OR DME REQUIRED) | | | | |
| S-36 | 880-1 781 (800-1) | 880-1¼ 781 (800-1½) | | NA |
| C CIRCLING | 880-1 777 (800-1) | 920-1¼ 817 (900-1½) | | NA |

NE-1, 25 FEB 2021 to 25 MAR 2021

NE-1, 25 FEB 2021 to 25 MAR 2021