

LOC I-GBY 109.7	APP CRS 125°	Rwy Idg TDZE Apt Elev	7221 1182 1182
---------------------------	------------------------	-----------------------------	---

ILS or LOC RWY 12

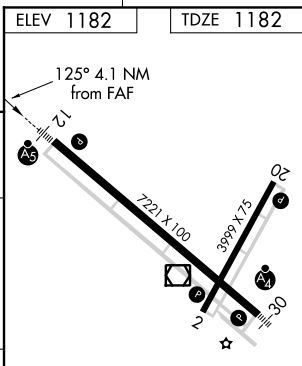
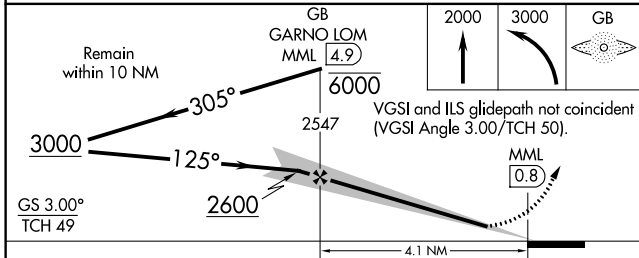
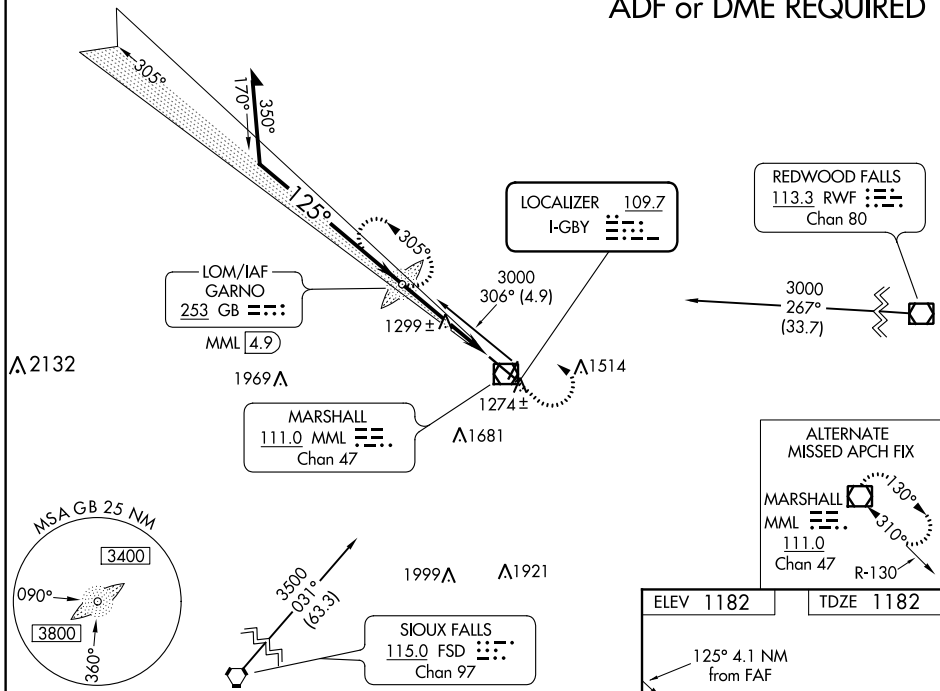
SOUTHWEST MINNESOTA RGNL MARSHALL/RYAN FIELD (MML)

ADF required.
NA When local altimeter setting not received, use Tracy Muni altimeter setting and increase all DAs/MDAs 60 feet and S-LOC 12 Cats C/D visibility 1/4 mile. For inoperative MALSR when using Tracy Muni altimeter setting, increase S-ILS 12 visibility to 1 mile all Cats.

MALSR MISSED APPROACH: Climb to 2000 then climbing left turn to 3000 direct GARNO LOM/MML 4.9 DME and hold.

AWOS-3PT 120.150	MINNEAPOLIS CENTER 127.1 290.2	GCO 121.725	UNICOM 122.8 (CTAF)
----------------------------	--	-----------------------	-------------------------------

ADF or DME REQUIRED



CATEGORY	A	B	C	D
S-ILS 12	1382-1/2 200 (200-1/2)			
S-LOC 12	1560-1/2 378 (400-1/2)		1560-3/4 378 (400-3/4)	
CIRCLING	1640-1 458 (500-1)		1640-1 1/2 458 (500-1 1/2)	1740-2 558 (600-2)

HIRL Rwy 12-30	REIL Rwys 2 and 20	MIRL Rwy 2-20			
FAF to MAP 4.1 NM					
Knots	60	90	120	150	180
Min:Sec	4:06	2:44	2:03	1:38	1:22

NC-1, 25 FEB 2021 to 25 MAR 2021

NC-1, 25 FEB 2021 to 25 MAR 2021