

WAAS CH 82106 W12A	APP CRS 125°	Rwy Idg TDZE Apt Elev	7221 1183 1183
--	------------------------	-----------------------------	---

RNAV (GPS) RWY 12

SOUTHWEST MINNESOTA RGNL MARSHALL/RYAN FIELD (MML)

RNP APCH.

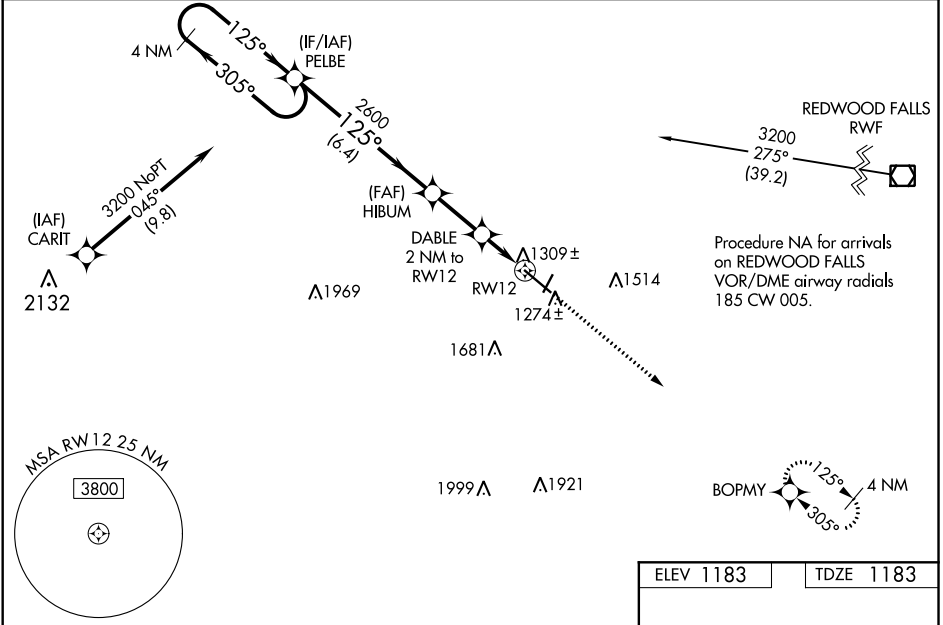
⚠ Baro-VNAV and VDP NA when using Tracy Muni altimeter setting. For uncompensated Baro-VNAV systems, LNAV/VNAV NA below -17°C or above 36°C. When local altimeter setting not received, use Tracy Muni altimeter setting and increase LPV DA to 1441, LNAV/VNAV DA to 1548, and LNAV/VNAV all Cats visibility ½ SM; increase all MDAs 60 feet and LNAV Cat C/D visibility ½ SM. For inoperative ALS, increase LNAV/VNAV all Cats visibility to ¾ SM, and LNAV Cat C/D visibility to 1 SM. For inoperative ALS when using Tracy Muni altimeter setting, increase LNAV/VNAV all Cats visibility to 1 SM.

MALS/R



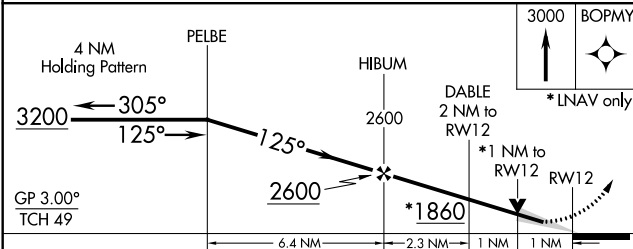
MISSED APPROACH:
Climb to 3000 direct BOPMY and hold.

AWOS-3PT 120.150	MINNEAPOLIS CENTER 127.1 290.2	GCO 121.725	UNICOM 122.8 (CTAF)
----------------------------	--	-----------------------	-------------------------------



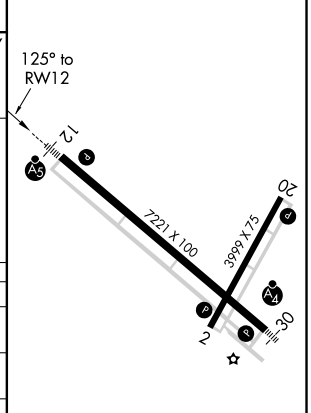
NC-1, 25 FEB 2021 to 25 MAR 2021

NC-1, 25 FEB 2021 to 25 MAR 2021



ELEV 1183	TDZE 1183
-----------	-----------

CATEGORY	A	B	C	D
LPV DA		1383-½	200 (200-½)	
LNAV/VNAV DA		1490-½	307 (400-½)	
LNAV MDA	1560-½	377 (400-½)	1560-⅝	377 (400-⅝)
CIRCLING	1640-1	457 (500-1)	1640-1½	1740-2
			457 (500-1½)	557 (600-2)



HIRL Rwy 12-30 **Ⓛ**
REIL Rws 2 and 20 **Ⓛ**
MIRL Rwy 2-20 **Ⓛ**

RNAV (GPS) RWY 12