

WAAS CH 86321 W30A	APP CRS 305°	Rwy Idg 7221 TDZE 1180 Apt Elev 1183
--	------------------------	---

RNAV (GPS) RWY 30

SOUTHWEST MINNESOTA RGNL MARSHALL/RYAN FIELD (MML)

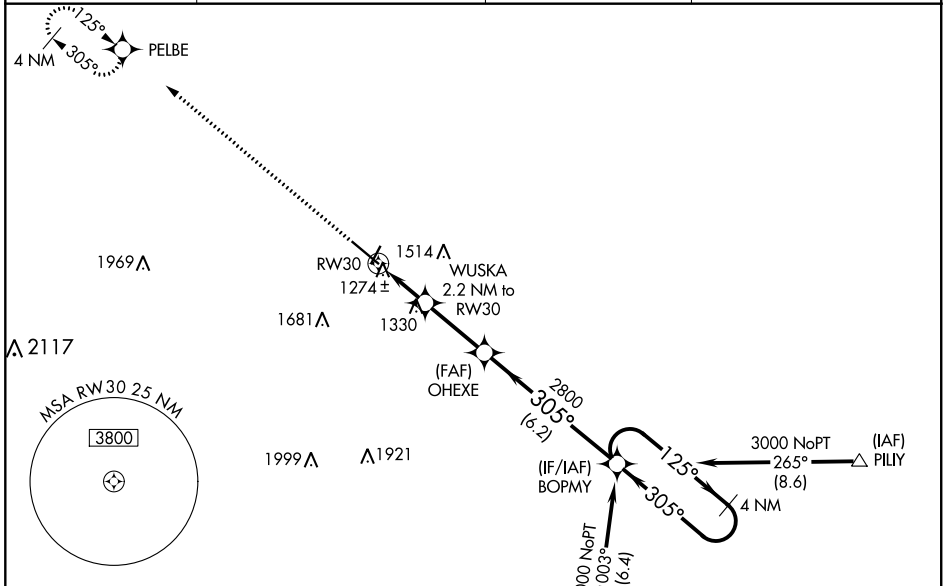
⚠ For uncompensated Baro-VNAV systems, LNAV/VNAV NA below -17°C (2°F) or above 36°C (96°F). DME/DME RNP-0.3 NA. VDP NA with Tracy altimeter setting. When local altimeter setting not received, use Tracy altimeter setting and increase all DA 58 feet and all MDA 60 feet, and LPV visibility all Cats 1/8 mile, LNAV/VNAV visibility all Cats 1/4 mile, and LNAV Cat C and D visibility 1/4 mile. Visibility reduction by helicopters NA. Baro-VNAV NA when using Tracy altimeter setting.

MALSF

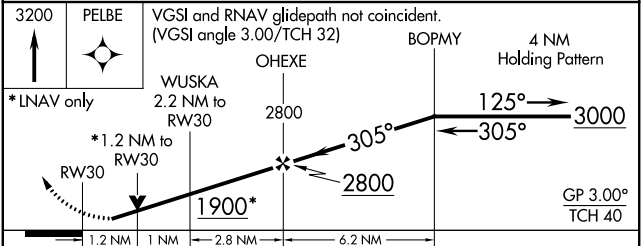
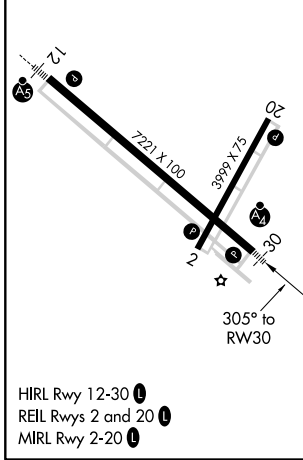


MISSED APPROACH:
Climb to 3200 direct PELBE and hold.

AWOS-3PT 120.150	MINNEAPOLIS CENTER 127.1 290.2	GCO 121.725	UNICOM 122.8 (CTAF) 0
----------------------------	--	-----------------------	---------------------------------



ELEV 1183	TDZE 1180
------------------	------------------



CATEGORY	A	B	C	D
LPV DA	1430-7/8		250 (300-7/8)	
LNAV/VNAV DA	1464-1		284 (300-1)	
LNAV MDA	1580-1	400 (400-1)	1580-1 1/8	400 (400-1 1/8)
CIRCLING	1640-1	457 (500-1)	1640-1 1/2 457 (500-1 1/2)	1740-2 557 (600-2)

RNAV (GPS) RWY 30

NC-1, 25 FEB 2021 to 25 MAR 2021

NC-1, 25 FEB 2021 to 25 MAR 2021