

EASTOVER, SOUTH CAROLINA

# HI-ILS or LOC/DME RWY 32

MC ENTIRE JNGB (KMMT)

LOC I-MMT <b>111.1</b>	APCH CRS <b>322°</b>	Rwy ldg TDZE Arprt Elev <b>9009</b> <b>243</b> <b>254</b>
---------------------------	-------------------------	--

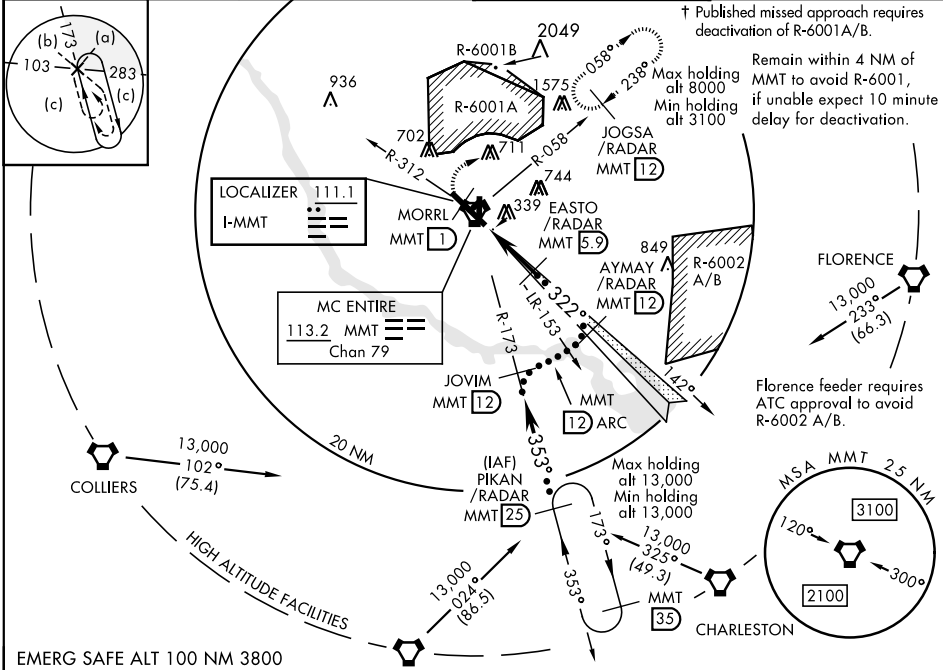
JAL-951 [USAF]



† MISSED APPROACH: Climb to 1100 direct MORRL/  
1 DME then climbing right turn to 3100 intercept  
MMT R-058 direct JOGSA/12 DME and hold.

▼ \*When ALS inop, increase CAT CDE RVR to 40, vis to 3/4 mile.  
\*\*When ALS inop, increase CAT C RVR to 55, vis to 1 mile.

ATIS <b>327.05</b>	SHAW APP CON <b>125.4 318.1</b>	MC ENTIRE TOWER ★ <b>132.4 (CTAF) 0 253.5</b>	GND CON <b>127.625 226.675</b>
-----------------------	------------------------------------	--	-----------------------------------

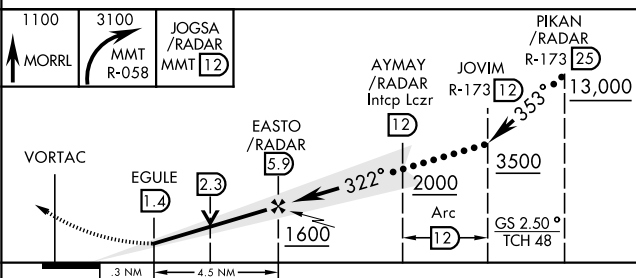
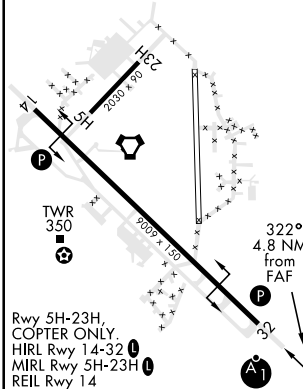


SE-2, 25 FEB 2021 to 25 MAR 2021

SE-2, 25 FEB 2021 to 25 MAR 2021

EMERG SAFE ALT 100 NM 3800

ELEV 254	TDZE 243
----------	----------



CATEGORY	C	D	E
S-ILS 32 *	443/24	200 (200-1/2)	
S-LOC 32 **	620/35	377 (400-5/8)	
CIRCLING	880-1 3/4 626 (700-1 3/4)	940-2 1/4 686 (700-2 1/4)	1020-2 3/4 766 (800-2 3/4)

EASTOVER, SOUTH CAROLINA  
Amdt 4 25MAY17

33° 55'N-80° 48'W

MC ENTIRE JNGB (KMMT)

# HI-ILS or LOC/DME RWY 32