

EASTOVER, SOUTH CAROLINA

HI-TACAN RWY 32

MC ENTIRE JNGB (KMMT)

VORTAC MMT 113.2 Chan 79	APCH CRS 328°	Rwy ldg TDZE Arprt Elev 9009 243 254
--	-------------------------	--

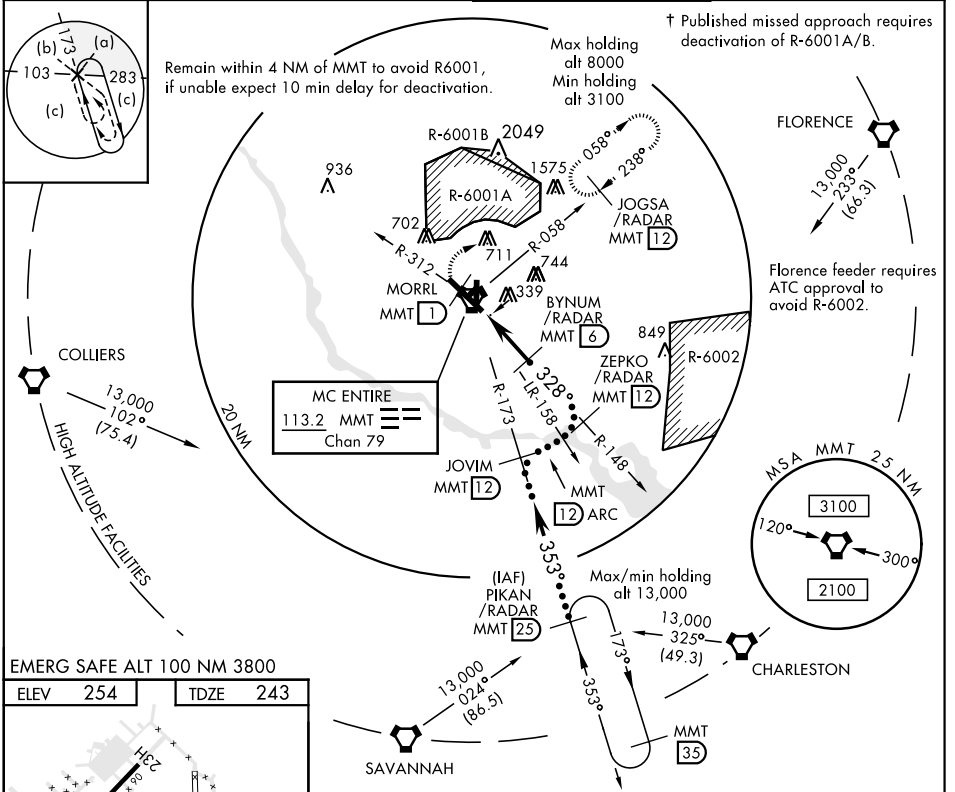
JAL-951 [USAF]

⚠ * When ALS inop, increase CAT CDE RVR 60, vis to 1½ miles.



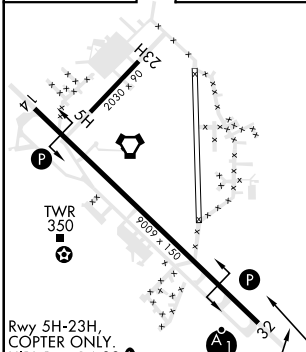
† MISSED APPROACH: Climb to 1100 direct MORRL/1 DME then climbing right turn to 3100 intercept MMT R-058 direct JOGSA/12 DME and hold.

ATIS 327.05	SHAW APP CON 125.4 318.1	MC ENTIRE TOWER ★ 132.4 (CTAF) 0 253.5	GND CON 127.625 226.675
-----------------------	------------------------------------	--	-----------------------------------



EMERG SAFE ALT 100 NM 3800

ELEV 254	TDZE 243
----------	----------



	1100 MORRL 1.3	3100 MMT R-058	JOGSA MMT 12	PIKAN/RADAR R-173 25
	VORTAC	HUTEM 2.3	BYNUM/RADAR R-148 6	ZEPKO/RADAR R-148 12
			JOVIM R-173 12	
				13,000
				3500
				2000
				1700
				2.67° TCH 48
CATEGORY	C		D	E
S-32 *	640/40		397	(400-¾)
CIRCLING	880-1¾ 626 (700-1¾)	940-2¼ 686 (700-2¼)	1020-2¾ 766 (800-2¾)	

EASTOVER, SOUTH CAROLINA
Amdt 4 25MAY17

33°55'N-80°48'W

MC ENTIRE JNGB (KMMT)

HI-TACAN RWY 32

SE-2, 25 FEB 2021 to 25 MAR 2021

SE-2, 25 FEB 2021 to 25 MAR 2021