

ILS or LOC/DME RWY 32

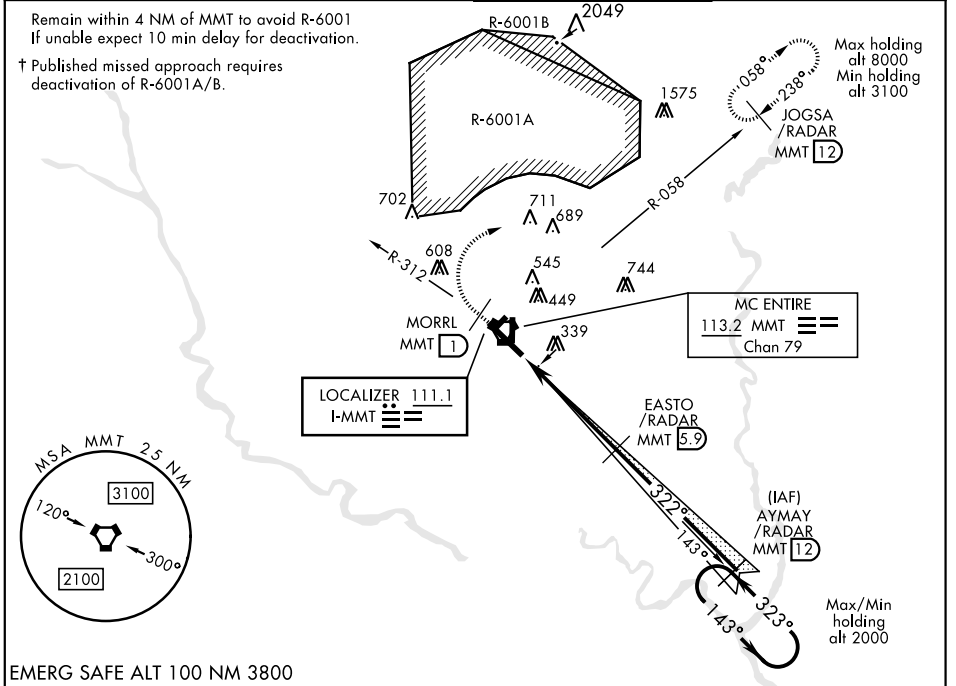
LOC I-MMT 111.1	APCH CRS 322°	Rwy ldg TDZE Arprt Elev	9009 243 254
---------------------------	-------------------------	-------------------------------	---

AL-951 [USAF]

MC ENTIRE JNGB (KMMT)

<p>▼ * When ALS inop, increase CAT ABCDE RVR to 40, and vis to 3/4 mile. ** When ALS inop, increase CAT ABCDE RVR to 55, and vis to 1 mile.</p>	<p>ALSF-1</p>	<p>† MISSED APPROACH: Climb to 1100 direct MORRL/ 1 DME then climbing right to 3100 intercept MMT R-058 direct JOGSA/12 DME and hold.</p>
---	---------------	---

<p>ATIS 327.05</p>	<p>SHAW APP CON 125.4 318.1</p>	<p>MC ENTIRE TOWER ★ 132.4 (CTAF) 253.5</p>	<p>GND CON 127.625 226.675</p>
-------------------------------	--	--	---

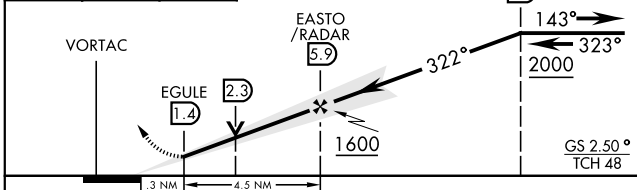


SE-2, 25 FEB 2021 to 25 MAR 2021

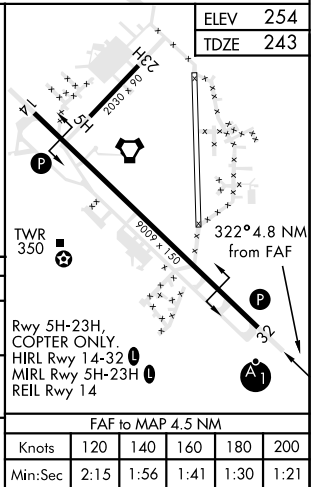
SE-2, 25 FEB 2021 to 25 MAR 2021

EMERG SAFE ALT 100 NM 3800

1100 MORRL 1	3100 MMT R-058	JOGSA/RADAR MMT 12
-----------------	----------------	--------------------



CATEGORY	A	B	C	D	E
S-ILS 32 *	443/24 200 (200-1/2)				
S-LOC 32 **	620/24 377 (400-1/2)	620/35 377 (400-5/8)			
CIRCLING	740-1 486 (500-1)	840-1 586 (600-1)	880-1 3/4 626 (700-1 3/4)	940-2 1/4 686 (700-2 1/4)	1020-2 3/4 766 (800-2 3/4)



ILS or LOC/DME RWY 32

FAF to MAP 4.5 NM					
Knots	120	140	160	180	200
Min:Sec	2:15	1:56	1:41	1:30	1:21