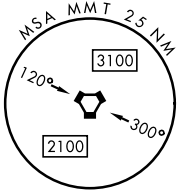
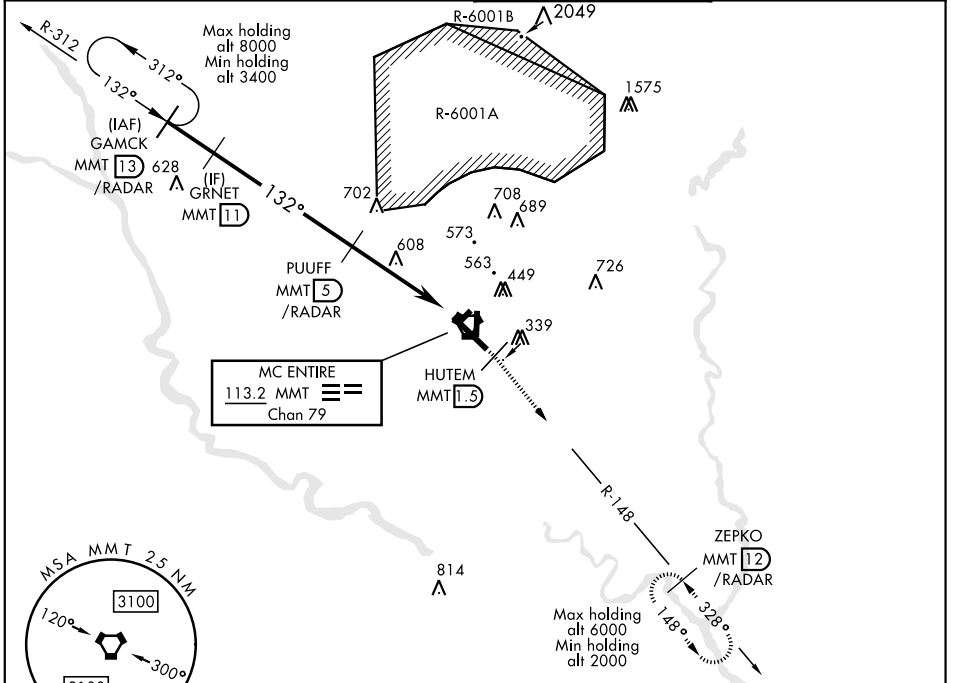


TACAN RWY 14

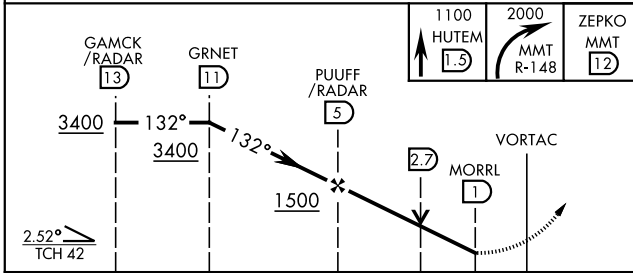
VORTAC MMT 113.2 Chan 79	APCH CRS 132°	Rwy ldg TDZE 251 Arprt Elev 254	AL-951 [USAF]	MC ENTIRE JNGB (KMMT)
--	-------------------------	--	---------------	-----------------------

* Circling to Rwy 05H-23H NA at night. MISSED APPROACH: Climb to 1100 direct HUTEM/1.5 DME then climbing right turn to 2000 intercept MMT R-148 direct ZEPKO/12 DME and hold.

ATIS 327.05	SHAW APP CON 125.4 318.1	MC ENTIRE TOWER ★ 132.4 (CTAF) 253.5	GND CON 127.625 226.675
-----------------------	------------------------------------	--	-----------------------------------



EMERG SAFE ALT 100 NM 3800



ELEV 254	TDZE 251
----------	----------

132° to VORTAC

HCC 2530 x 900

TWR 350

2000 x 150

Rwy 5H-23H, COPTER ONLY.
HIRL Rwy 14-32
MIRL Rwy 5H-23H
REL Rwy 14

FAF to MAP 4.0 NM					
Knots	60	90	120	150	180
Min:Sec	4:00	2:40	2:00	1:36	1:20

TACAN RWY 14

SE-2, 25 FEB 2021 to 25 MAR 2021

SE-2, 25 FEB 2021 to 25 MAR 2021