


LOC I-TNQ 108.7	APP CRS 034°	Rwy Idg 5999
		TDZE 624
		Apt Elev 625

ILS or LOC RWY 3

MENOMINEE RGNL (MNM)

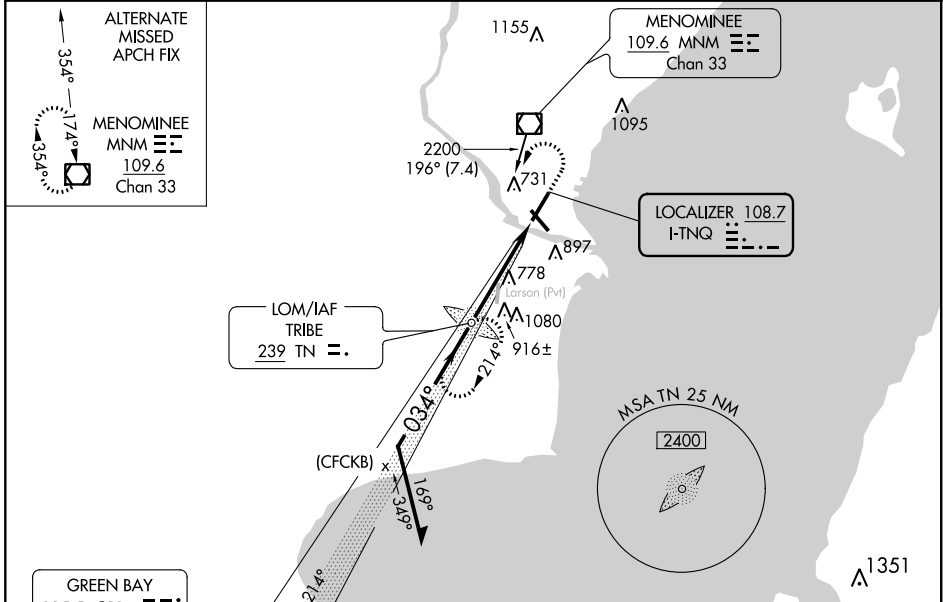
ADF required. ADF or RADAR required for procedure entry.

NA Circling Rwy 14, 32 NA at night. Autopilot coupled approach NA below 1574. Inop table does not apply. When local altimeter setting not received, use Sturgeon Bay altimeter setting and increase all DA/MDA 60 feet, Circling Cat C/D visibility 1/4 SM. For inop ALS when using Sturgeon Bay altimeter setting, increase S-LOC 3 Cat C/D visibility to 1/2 SM.

MALS R 

MISSED APPROACH: Climb to 2200 then left turn direct TRIBE LOM and hold.

AWOS-3PT 109.6	GREEN BAY APP CON* 120.3 338.2	UNICOM 122.8 (CTAF)
--------------------------	--	-------------------------------



ALTERNATE MISSED APCH FIX: 354° - 7.4 NM

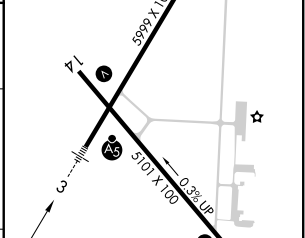
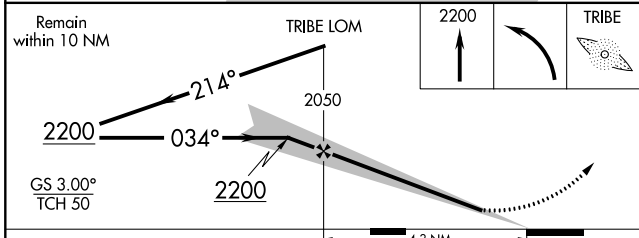
MENOMINEE MNM 109.6 Chan 33

GREEN BAY 115.5 GRB Chan 102

LOM/IAF TRIBE 239 TN

(CFCKB) x

ELEV 625	TDZE 624
MIRL Rwy 14-32	HIRL Rwy 3-21



CATEGORY	A	B	C	D
S-ILS 3		824-1	200 (200-1)	
S-LOC 3		980-1	356 (400-1)	
CIRCLING	1200-1	575 (600-1)	1200-1½ 575 (600-1½)	1380-2½ 755 (800-2½)

FAF to MAP 4.3 NM					
Knots	60	90	120	150	180
Min:Sec	4:18	2:52	2:09	1:43	1:26

EC-1, 25 FEB 2021 to 25 MAR 2021

EC-1, 25 FEB 2021 to 25 MAR 2021