

WAAS CH 73014 W03A	APP CRS 034°	Rwy Idg TDZE Apt Elev	5999 624 625
--	------------------------	-----------------------------	---

RNAV (GPS) RWY 3

MENOMINEE RGNL (MNM)

RNP APCH.

⚠ Circling Rwy 14, 32 NA at night. Baro-VNAV and VDP NA when using Sturgeon Bay altimeter setting. For uncompensated Baro-VNAV systems, LNAV/VNAV NA below -16°C or above 54°C. When local altimeter setting not received, use Sturgeon Bay altimeter setting and increase all DA/MDA 60 feet, increase Circling Cat C/D visibility ½ SM. For inop MALS R when using Sturgeon Bay altimeter setting increase LNAV MDA visibility Cat C/D to 1¾. Inop table does not apply to LPV and LNAV/VNAV all Cats and LNAV MDA Cats A/B.

MALS R

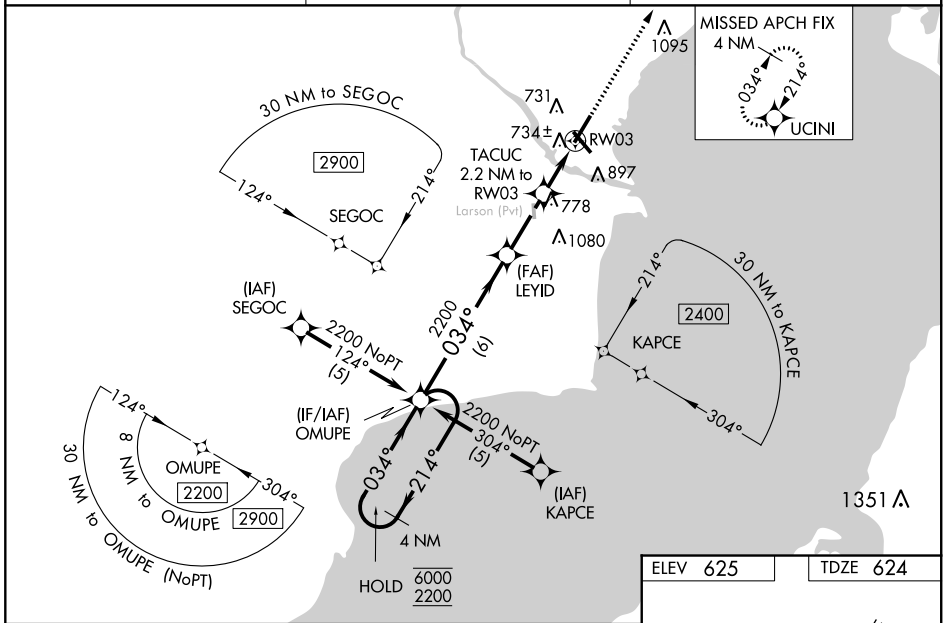


MISSED APPROACH:
Climb to 2300 direct UCINI and hold.

AWOS-3PT
109.6

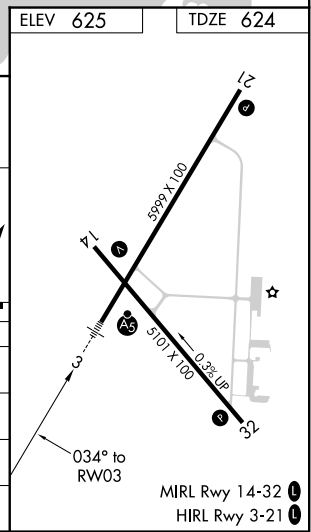
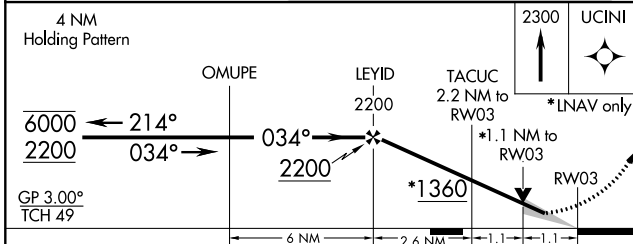
GREEN BAY APP CON ★
120.3 338.2

UNICOM
122.8 (CTAF) Ⓛ



EC-1, 25 FEB 2021 to 25 MAR 2021

EC-1, 25 FEB 2021 to 25 MAR 2021



CATEGORY	A	B	C	D
LPV DA		824-1	200 (200-1)	
LNAV/VNAV DA		1150-1½	526 (600-1)	
LNAV MDA		1000-1	376 (400-1)	
C CIRCLING	1 200-1	575 (600-1)	1 200-1½	1 380-2½
			575 (600-1½)	755 (800-2½)