

WAAS CH 56333 W32A	APP CRS 323°	Rwy Idg TDZE Apt Elev	5101 608 625
--	------------------------	-----------------------------	---

RNAV (GPS) RWY 32

MENOMINEE RGNL (MNM)

RNP APCH

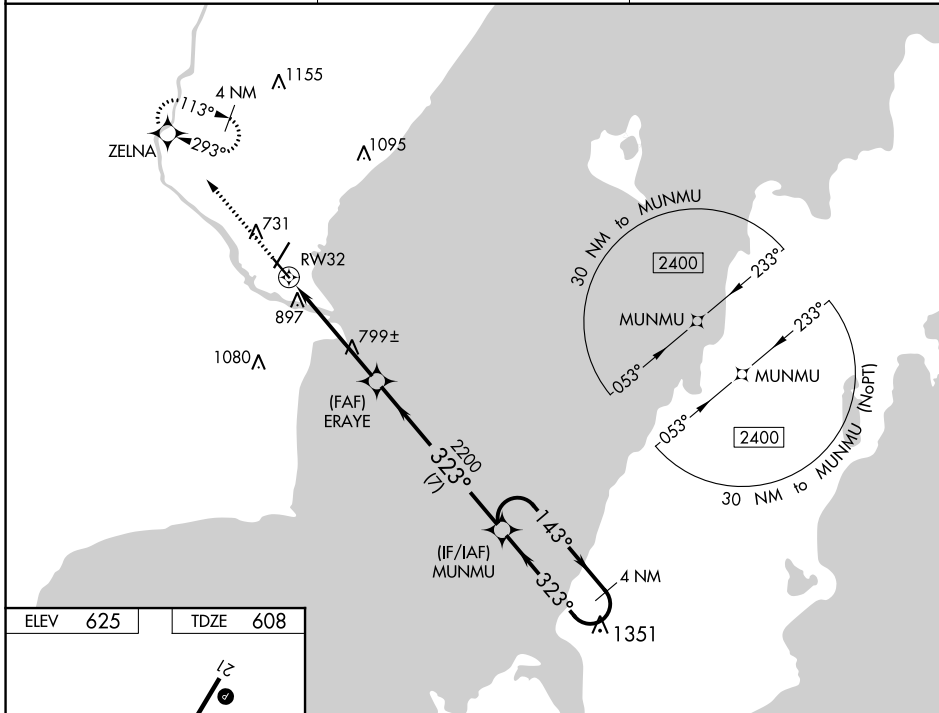
⚠ Rwy 32 helicopter visibility reduction below 1 SM NA. When local altimeter setting not received, use Sturgeon Bay altimeter setting and increase all MDA 60 feet, increase LNAV Cat C/D and Circling Cat C visibility 1/8 SM, and Circling Cat D visibility 1/4 SM. Straight-in Rwy 32 NA at night, Circling Rwy 14, 32 NA at night.

MISSED APPROACH: Climb to 4000 direct ZELNA and hold, continue climb-in-hold to 4000.

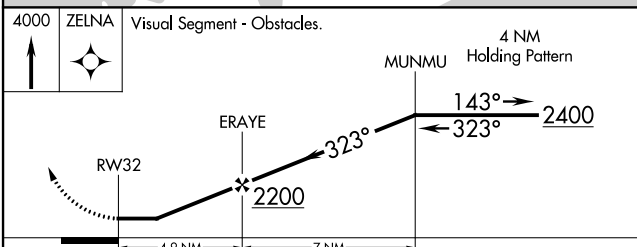
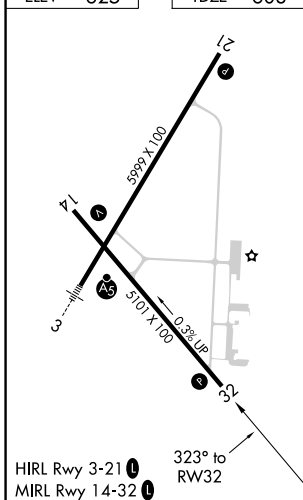
AWOS-3PT
109.6

GREEN BAY APP CON ★
120.3 338.2

UNICOM
122.8 (CTAF) 0



ELEV 625	TDZE 608
-----------------	-----------------



CATEGORY	A	B	C	D
LP MDA	1060-1	452 (500-1)	1060-1 3/8	452 (500-1 3/8)
LNAV MDA	1160-1	552 (600-1)	1160-1 3/8	552 (600-1 3/8)
C CIRCLING	1200-1	575 (600-1)	1200-1 5/8 575 (600-1 5/8)	1380-2 1/2 755 (800-2 1/2)