

|  |                        |                             |   |
|--|------------------------|-----------------------------|---|
| WAAS<br>CH <b>78115</b><br><b>W18A</b> | APP CRS<br><b>185°</b> | Rwy Idg<br>TDZE<br>Apt Elev | <b>5001</b><br><b>454</b><br><b>458</b> |
|--|------------------------|-----------------------------|---|

# RNAV (GPS) RWY 18

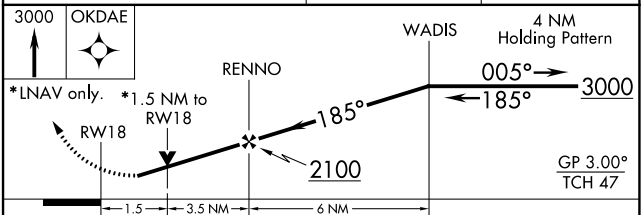
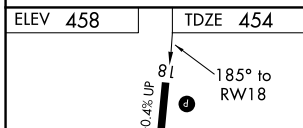
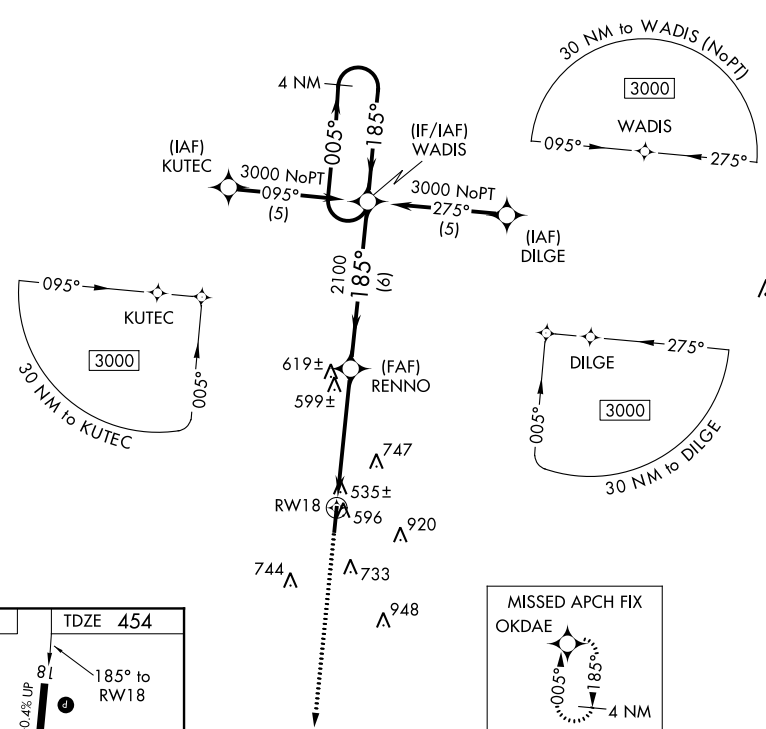
PHILADELPHIA MUNI (MPPE)

**⚠** For uncompensated Baro-VNAV systems, LNAV/VNAV NA below -15°C (5°F) or above 48°C (118°F), DME/DME RNP-0.3 NA. Visibility reduction by helicopters NA.

**⚠** When local altimeter setting not received, use Key Field altimeter setting and increase all DA 101 feet and all MDA 120 feet and increase LPV all Cats, LNAV Cat C and Circling Cats C and D visibility ¼ mile, increase LNAV/VNAV all Cats, LNAV Cat D visibility ½ mile. Baro-VNAV and VDP NA when using Key Field altimeter setting.

**MISSED APPROACH:**  
Climb to 3000 direct OKDAE and hold.

|                           |  |                                 |
|---------------------------|--|---------------------------------|
| AWOS-3P<br><b>118.725</b> | MEMPHIS CENTER<br><b>132.75 350.25</b> | UNICOM<br><b>123.0 (CTAF) 0</b> |
|---------------------------|--|---------------------------------|



| CATEGORY     | A      | B           | C                       | D                     |
|--------------|--------|-------------|-------------------------|-----------------------|
| LPV DA       |        | 774-1¼      | 320 (400-1¼)            |                       |
| LNAV/VNAV DA |        | 850-1½      | 396 (400-1½)            |                       |
| LNAV MDA     | 960-1  | 506 (600-1) | 960-1½                  | 506 (600-1½)          |
| CIRCLING     | 1060-1 | 602 (700-1) | 1060-1¾<br>602 (700-1¾) | 1060-2<br>602 (700-2) |

SC-4, 25 FEB 2021 to 25 MAR 2021

SC-4, 25 FEB 2021 to 25 MAR 2021