

APP CRS	Rwy Idg	3301
060°	TDZE	1215
	Apt Elev	1215

RNAV (GPS) RWY 6

MARSHALL COUNTY (MPG)

RNP APCH

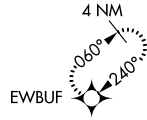
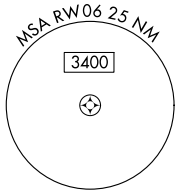
▼ Rwy 6 helicopter visibility reduction below 3/4 SM NA. VDP NA when using Wheeling altimeter setting. When local altimeter setting not received, use Wheeling altimeter setting and increase all MDA 60 feet and Cat C visibilities 1/8 mile.

MISSED APPROACH: Climb to 3100 direct EWBUF and hold.

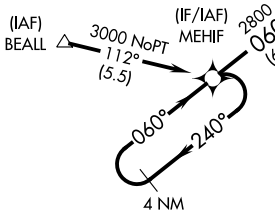
AWOS-3
119.05

CLEVELAND CENTER
126.95 239.30

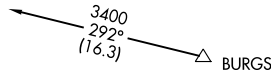
UNICOM
122.7 (CTAF) ①



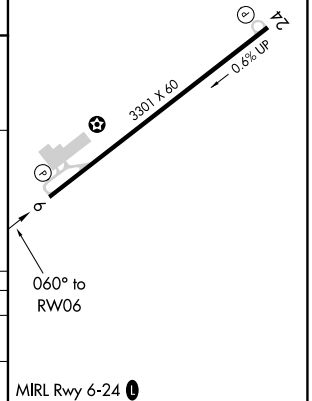
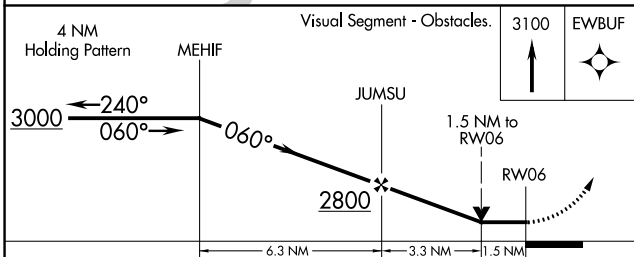
Procedure NA for arrivals at BEALL on V117 southwest bound.



Procedure NA for arrivals at BURGSS on V119 eastbound, V103-309 southbound, and V309 northeast bound.



ELEV 1215	TDZE 1215
-----------	-----------



CATEGORY	A	B	C	D
LNAV MDA	1860-1	645 (700-1)	1860-1 7/8 645 (700-1 7/8)	NA
CIRCLING	1860-1	645 (700-1)	1860-1 7/8 645 (700-1 7/8)	NA

NE-4, 25 FEB 2021 to 25 MAR 2021

NE-4, 25 FEB 2021 to 25 MAR 2021