

WAAS CH 69611 W17A	APP CRS 168°	Rwy ldg TDZE Apt Elev	5002 1135 1166
--	------------------------	-----------------------------	---

RNAV (GPS) RWY 17

EDWARD F KNAPP STATE (MPV)

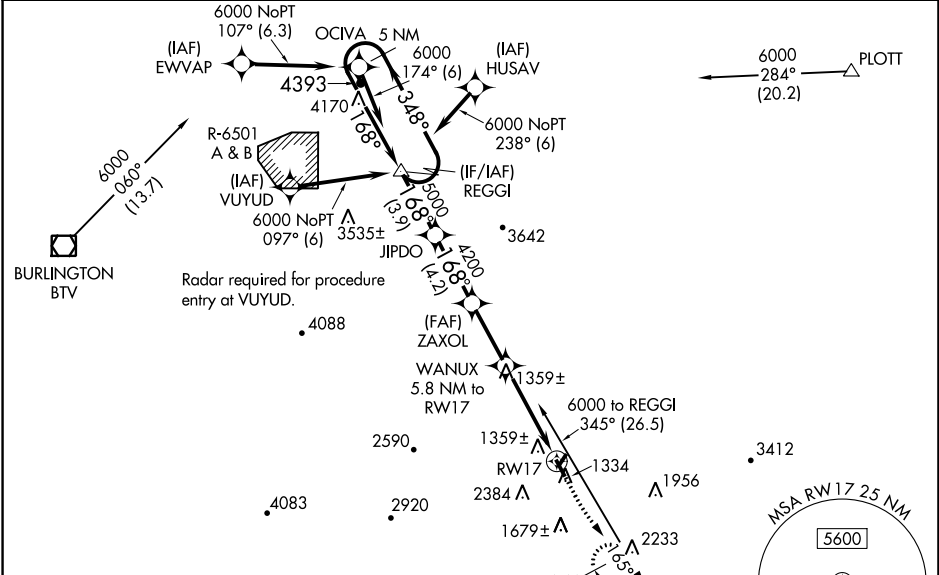
RNP APCH.

⚠ For uncompensated Baro-VNAV systems, LNAV/VNAV NA below -21°C or above 54°C. Rwy 17 helicopter visibility reduction below 3/4 SM NA.
⚠ NA When local altimeter setting not received, procedure NA. Circling Rwy 5, 35, NA at night. For inoperative MALS, increase LNAV/VNAV all Cats visibility to 1 1/2 miles.
⚠ -20°C



MISSED APPROACH:
 Climb to 1700 then climb to 5200 direct MPV VOR/DME and hold, continue climb-in-hold to 5200.

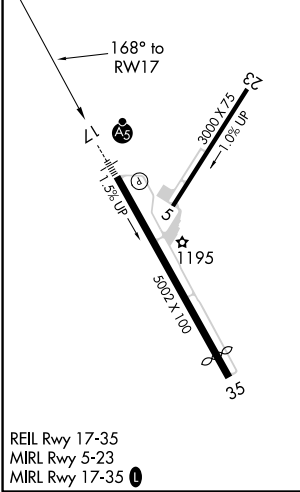
ASOS 132.675	BOSTON CENTER 135.7 282.2	UNICOM 122.8 (CTAF) 0
------------------------	-------------------------------------	---------------------------------



NE-1, 25 FEB 2021 to 25 MAR 2021

NE-1, 25 FEB 2021 to 25 MAR 2021

ELEV 1166	TDZE 1135
-----------	-----------



REIL Rwy 17-35
 MIRL Rwy 5-23
 MIRL Rwy 17-35 **0**

5 NM Holding Pattern 6000 ← 348° GP 3.00° TCH 50 5000 4200 ← *2980 3.9 NM 4.2 NM 3.8 NM 4.1 1.7	REGGI	JIPDO	ZAXOL	WANUX 5.8 NM to RWY17	*LNAV only.
	1700	5200	MPV		
CATEGORY	A	B	C	D	
LPV DA	1509-3/4		374 (400-3/4)		
LNAV/VNAV DA	1624-1 1/4		489 (500-1 1/4)		
LNAV MDA	1680-3/4	545 (600-3/4)	1680-1 1/4	545 (600-1 1/4)	
C CIRCLING	1980-1 1/4 814 (900-1 1/4)	1980-1 1/2 814 (900-1 1/2)	2700-3 1534 (1600-3)	2920-3 1754 (1800-3)	