

APP CRS	Rwy Idg	4515
348°	TDZE	1158
	Apt Elev	1166

RNAV (GPS) RWY 35

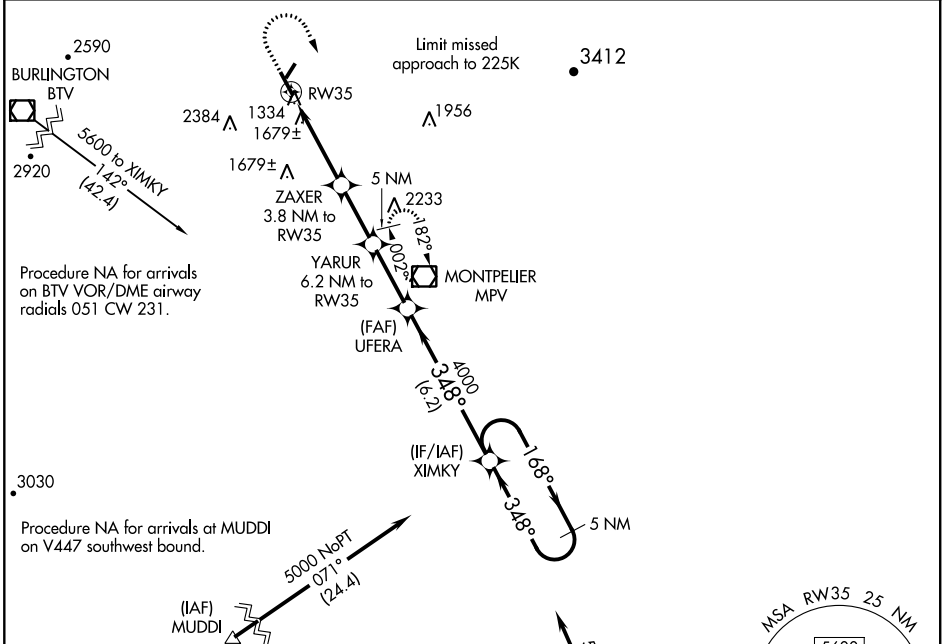
EDWARD F KNAPP STATE (MPV)

RNP APCH.

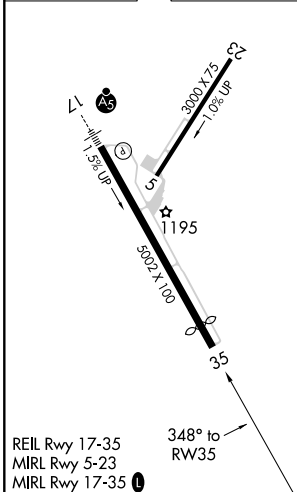
▼ **NA** When local altimeter setting not received, procedure NA. Rwy 35 helicopter visibility reduction below 1 SM NA. Straight-in Rwy 35
 ☁ **-20°C** NA at night. Circling Rwy 5, 35 NA at night.

MISSED APPROACH: Climb to 2400 then climbing right turn to 5100 direct MPV VOR/DME and hold, continue climb-in-hold to 5100.

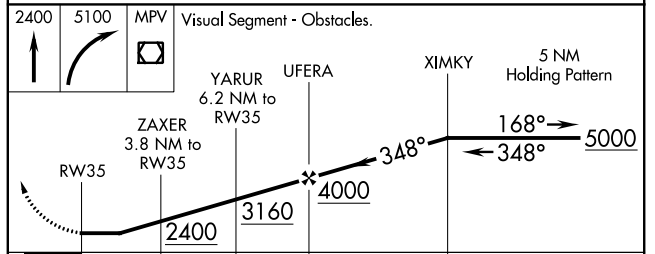
ASOS	BOSTON CENTER	UNICOM
132.675	135.7 282.2	122.8 (CTAF) 0



ELEV 1166	TDZE 1158
-----------	-----------



Procedure NA for arrivals on LEB VOR/DME airway radials 267 CW 353. (IAF) LEBANON LEB



CATEGORY	A	B	C	D
LNAV MDA	1940-1 782 (800-1)	1940-1¼ 782 (800-1¼)	1940-2½ 782 (800-2½)	782 (800-2½)
C CIRCLING	1980-1¼	814 (900-1¼)	2700-3 1534 (1600-3)	2920-3 1754 (1800-3)

NE-1, 25 FEB 2021 to 25 MAR 2021

NE-1, 25 FEB 2021 to 25 MAR 2021