

WAAS CH 72626 W05A	APP CRS 047°	Rwy Idg 4000 TDZE 12 Apt Elev 13
--	------------------------	---

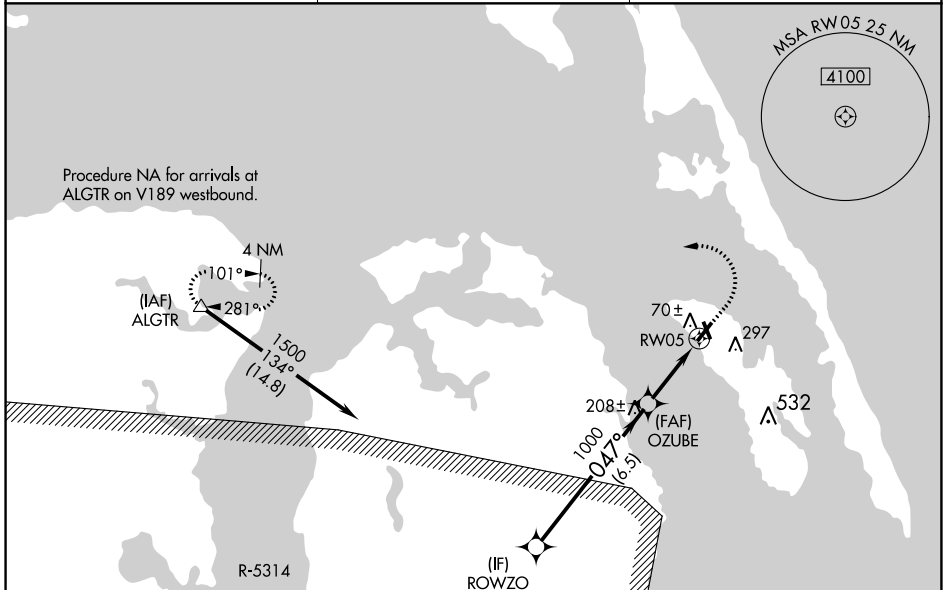
RNAV (GPS) RWY 5

DARE COUNTY RGNL (MQI)

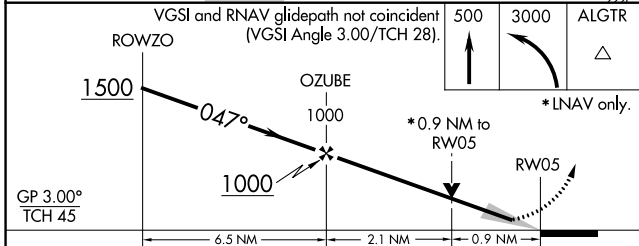
⚠ For uncompensated Baro-VNAV systems, LNAV/VNAV NA below -5°C (23°F) or above 54°C (130°F). DME/DME RNP-0.3 NA. When local altimeter setting not received, use Elizabeth City altimeter setting and increase all DA 72 feet and all MDA 80 feet; increase LPV all Cats visibility 3/8 mile; increase LNAV/VNAV all Cats visibility 1/4 mile; increase LNAV Cat C visibility 1/8 mile. Baro-VNAV and VDP NA when using Elizabeth City altimeter setting. Circling to Rwy 35 NA at night.

⚠ MISSED APPROACH: Climb to 500 then climbing left turn to 3000 direct ALGTR and hold.

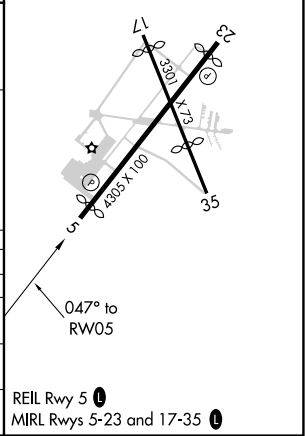
AWOS-3 128.275	CHERRY POINT APP CON 124.725 350.35	UNICOM 122.8 (CTAF)
--------------------------	---	-------------------------------



ELEV 13	TDZE 12
---------	---------



CATEGORY	A	B	C	D
LPV DA	262-3/4	250 (300-3/4)		NA
LNAV/VNAV DA	347-1 1/8	335 (400-1 1/8)		NA
LNAV MDA	460-1 448 (500-1)	460-1 3/8 448 (500-1 3/8)		NA
CIRCLING	600-1 587 (600-1)	600-1 1/2 587 (600-1 1/2)		NA



SE-2, 25 FEB 2021 to 25 MAR 2021

SE-2, 25 FEB 2021 to 25 MAR 2021