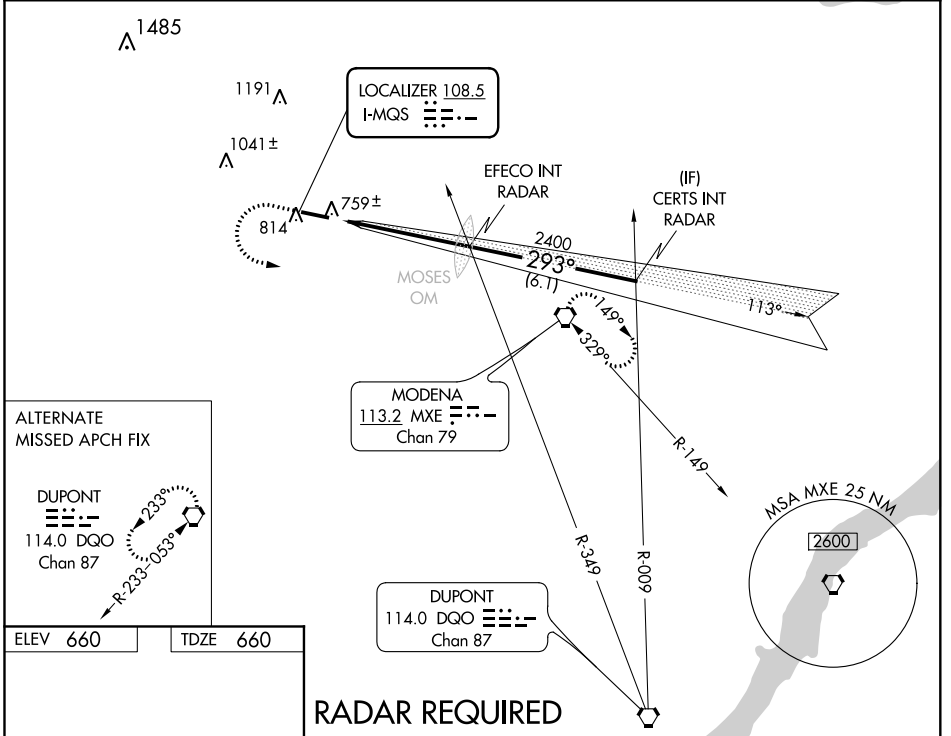


LOC I-MQS 108.5	APP CRS 293°	Rwy Idg TDZE Apt Elev	5400 660 660
---------------------------	------------------------	-----------------------------	---

ILS or LOC RWY 29
CHESTER COUNTY G O CARLSON (MQS)

<p>⚠ Rwy 29 helicopter visibility reduction below 3/4 SM NA. When local altimeter setting not received, use Pottstown-Limerick altimeter setting and increase all DA 98 feet, and all MDA 100 feet, S-ILS 29 visibility 1/4 mile all Cats, S-LOC 29 visibility Cats C and D 1/4 mile, and Circling visibility Cat C and D 1/4 mile.</p>		<p>MISSED APPROACH: Climb to 1300 then climbing left turn to 2400 direct MXE VORTAC and hold.</p>	
AWOS-3 126.25	PHILADELPHIA APP CON 124.35 319.15	CLNC DEL 125.6	UNICOM 122.7 (CTAF) 0

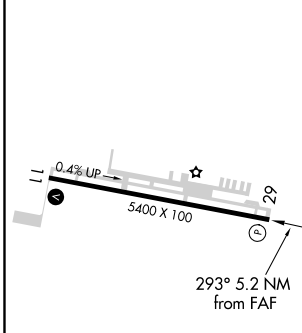


ALTERNATE MISSED APCH FIX

DUPONT
114.0 DGO
Chan 87

R-233-053°

ELEV 660	TDZE 660
----------	----------

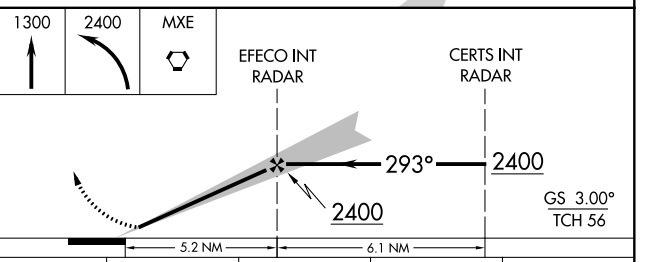


HIRL Rwy 11-29 0
REIL Rwy 11-29 0

FAF to MAP 5.2 NM

Knots	60	90	120	150	180
Min:Sec	5:12	3:28	2:36	2:05	1:44

RADAR REQUIRED



CATEGORY	A	B	C	D
S-ILS 29	919-1 259 (300-1)			
S-LOC 29	1040-1 380 (400-1)			1040-1 1/4 380 (400-1 1/4)
CIRCLING	1140-1 480 (500-1)	1220-1 1/2 560 (600-1 1/2)		1260-2 600 (600-2)

NE-4, 25 FEB 2021 to 25 MAR 2021

NE-4, 25 FEB 2021 to 25 MAR 2021