

APP CRS	Rwy Idg	5600
055°	TDZE	670
	Apt Elev	681

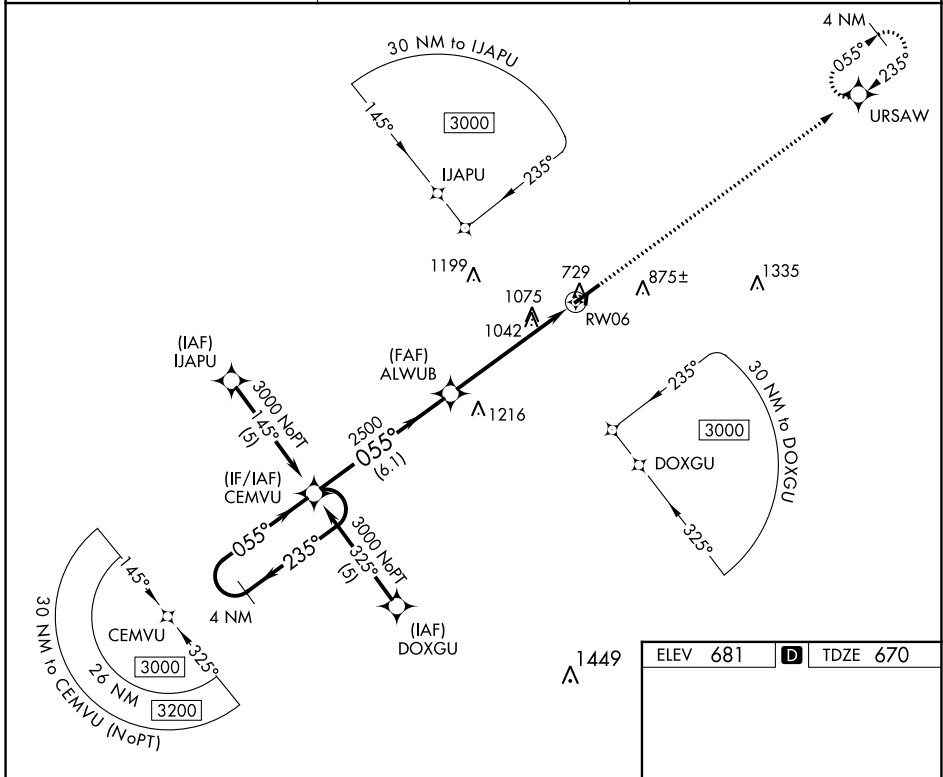
RNAV (GPS) RWY 6

MAURY COUNTY (MRC)

▼ DME/DME RNP-0.3 NA. Visibility reduction by helicopters NA. When local altimeter setting not received, use Nashville Intl. altimeter setting and increase all MDA 120 feet and increase LNAV Cat B visibility ¼ mile, Cats C and D visibility ½ mile, increase Circling Cat B visibility ¼ mile, Cats C and D visibility ½ mile.

▲ MISSED APPROACH: Climb to 3000 direct URSAW and hold.

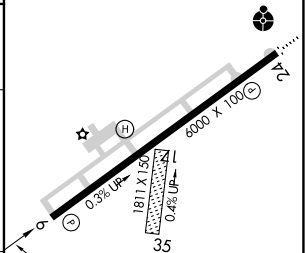
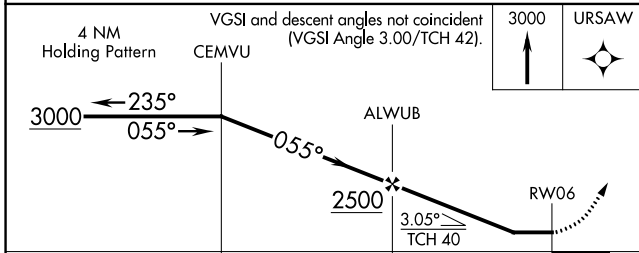
AWOS-3 128.625	MEMPHIS CENTER 125.85 379.25	UNICOM 122.8 (CTAF) 0
--------------------------	--	---------------------------------



SE-1, 25 FEB 2021 to 25 MAR 2021

SE-1, 25 FEB 2021 to 25 MAR 2021

ELEV 681	D TDZE 670
----------	-------------------



CATEGORY	A	B	C	D
LNAV MDA	1340-1	670 (700-1)	1340-1¾ 670 (700-1¾)	1340-2 670 (700-2)
CIRCLING	1340-1	659 (700-1)	1380-2 699 (700-2)	1380-2¼ 699 (700-2¼)

MIRL Rwy 6-24
REIL Rwy 6
REIL Rwy 24 **0**