

APP CRS	Rwy Idg	4001
141°	TDZE	9
	Apt Elev	11

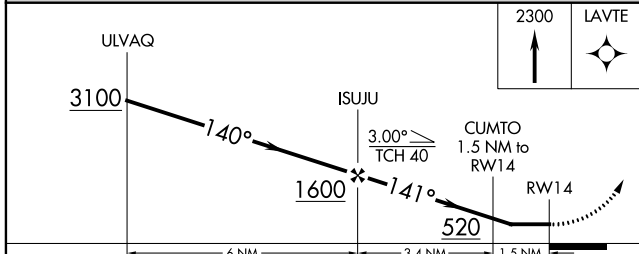
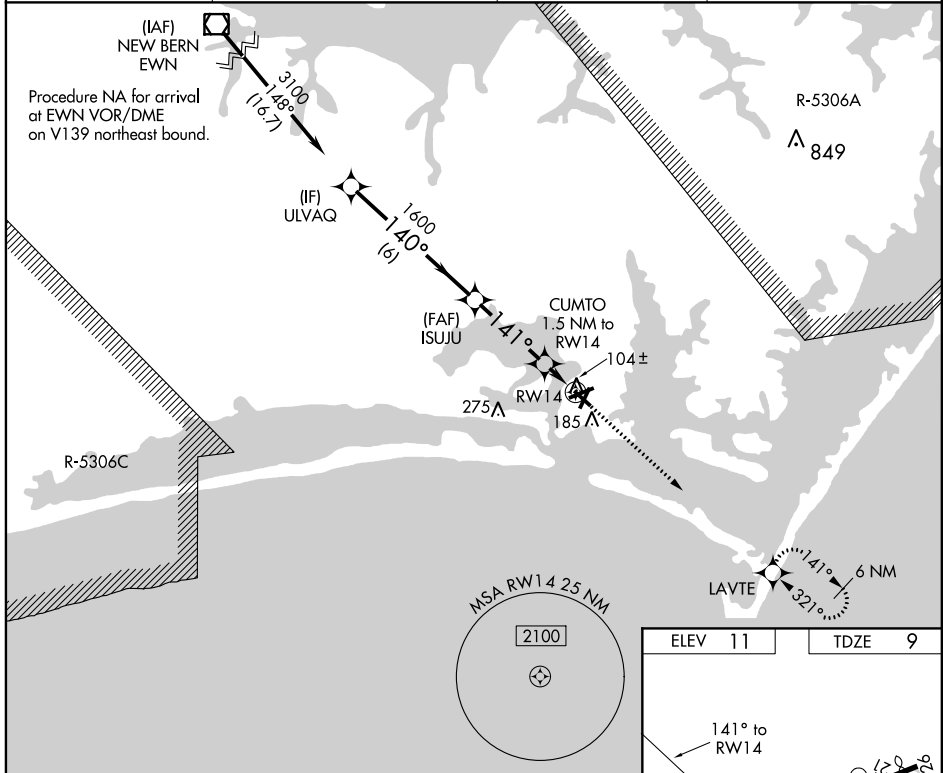
RNAV (GPS) RWY 14

MICHAEL J SMITH FIELD (MR.H)

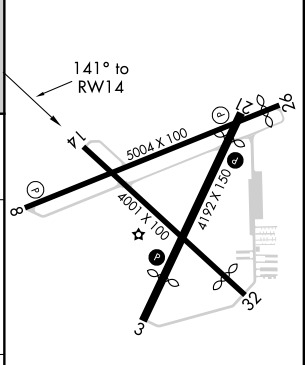
⚠ DME/DME RNP-0.3 NA. ATC clearance required to penetrate R-5306A and R-5306C. When local altimeter setting not received, use Cherry Point MCAS altimeter setting and increase all MDA 40 feet; increase LNAV Cats C and D visibility 1/8 mile. Straight-in Rwy 14 NA at night, Circling Rwy 8, 14, 32 NA at night. Rwy 8, 14, 32 helicopter visibility reduction below 1 SM NA.

MISSED APPROACH:
Climb to 2300 direct LAVTE and hold.

ASOS 135.375	CHERRY POINT APP CON 124.1 268.7	CLNC DEL 125.65	UNICOM 122.8 (CTAF) 0
------------------------	--	---------------------------	---------------------------------



ELEV	11	TDZE	9
------	----	------	---



CATEGORY	A	B	C	D
LNAV MDA	360-1 351 (400-1)			
CIRCLING	540-1	529 (600-1)	540-1½ 529 (600-1½)	620-2 609 (700-2)

REIL Rwy 8 and 26 **0**
MIRL Rwy 3-21 and 8-26 **0**

SE-2, 25 FEB 2021 to 25 MAR 2021

SE-2, 25 FEB 2021 to 25 MAR 2021