

APP CRS	Rwy Idg	3328
033°	TDZE	9
	Apt Elev	11

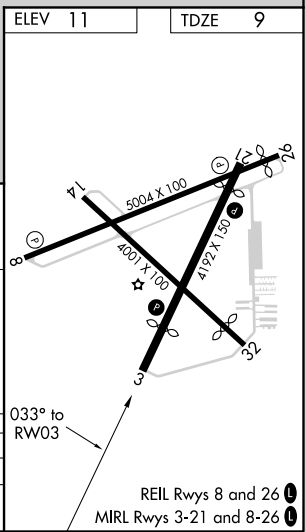
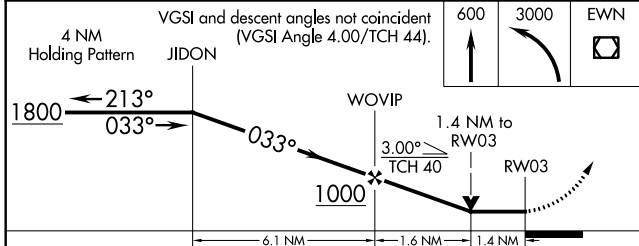
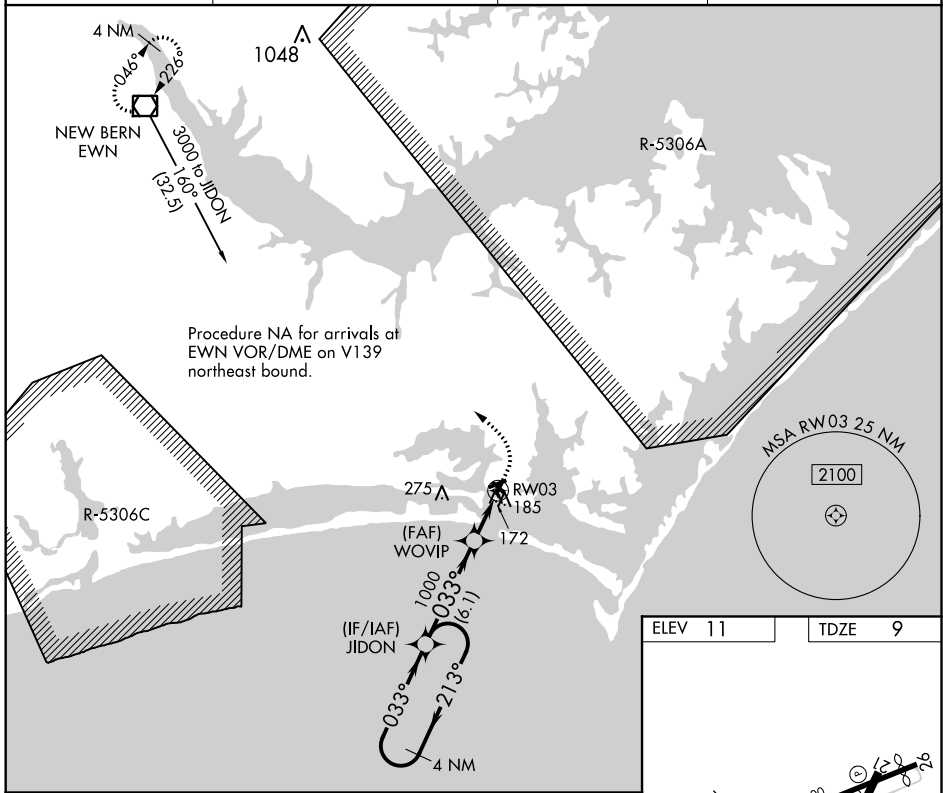
RNAV (GPS) RWY 3

MICHAEL J SMITH FIELD (MR.H)

⚠ Circling Rwy 8, 14, 32 NA at night. DME/DME RNP-0.3 NA. ATC clearance required to penetrate R-5306A and R-5306C. When local altimeter setting not received, use Cherry Point MCAS altimeter setting and increase all MDA 40 feet. Rwy 3 helicopter visibility reduction below 3/4 SM NA. VDP NA when using Cherry Point MCAS altimeter setting. Rwy 8, 14, 32 helicopter visibility reduction below 1 SM NA.

MISSED APPROACH: Climb to 600 then climbing left turn to 3000 direct EWN VOR/DME and hold.

ASOS 135.375	CHERRY POINT APP CON 124.1 268.7	CLNC DEL 125.65	UNICOM 122.8 (CTAF)
------------------------	--	---------------------------	-------------------------------



CATEGORY	A	B	C	D
LNVA MDA	480-1	471 (500-1)		NA
CIRCLING	540-1	529 (600-1)		NA

SE-2, 25 FEB 2021 to 25 MAR 2021

SE-2, 25 FEB 2021 to 25 MAR 2021