

VORTAC MSL <b>116.5</b> Chan <b>112</b>	APP CRS <b>111°</b>	Rwy Idg TDZE <b>544</b> Apt Elev <b>551</b>
---	------------------------	---

# VOR RWY 12

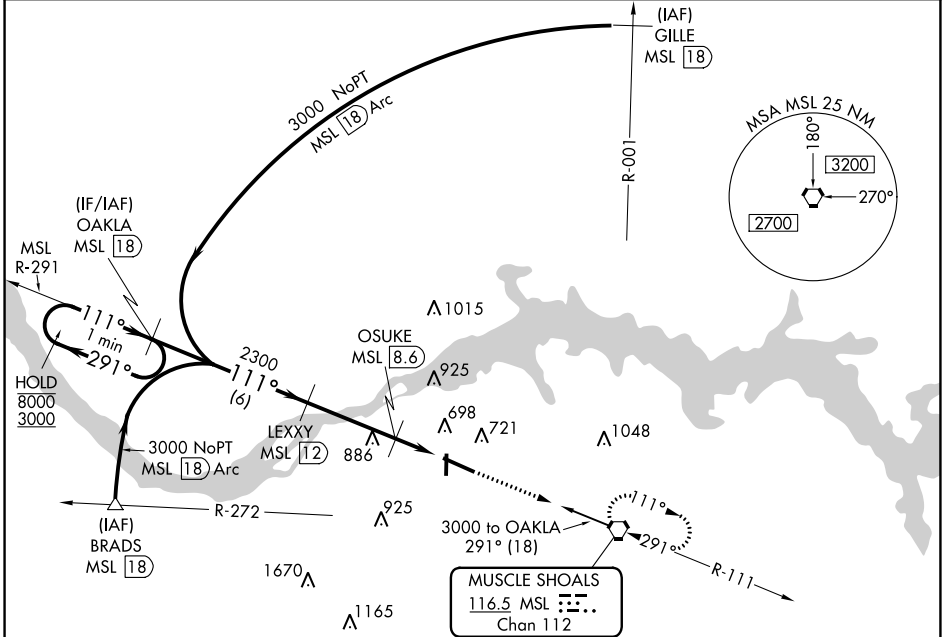
NORTHWEST ALABAMA RGNL (MSL)

DME required.

**▼** Rwy 12 helicopter visibility reduction below 3/4 SM NA.

MISSED APPROACH: Climb to 2400 direct MSL VORTAC and hold.

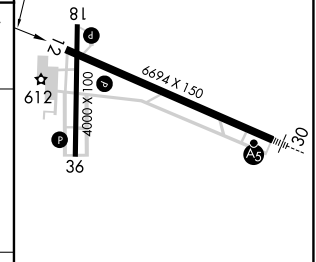
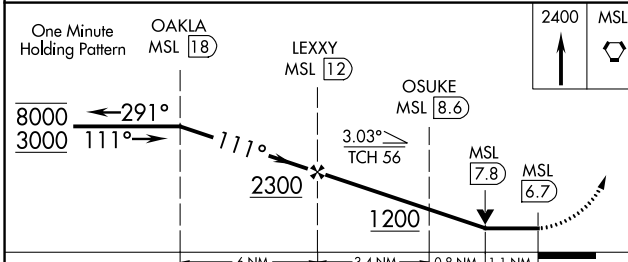
ASOS <b>119.425</b>	MEMPHIS CENTER <b>120.8 307.0</b>	GCO <b>121.725</b>	UNICOM <b>123.05 (CTAF)</b>
------------------------	--------------------------------------	-----------------------	--------------------------------



SE-4, 25 FEB 2021 to 25 MAR 2021

SE-4, 25 FEB 2021 to 25 MAR 2021

ELEV 551	TDZE 544
----------	----------



CATEGORY	A	B	C	D
S-12	960-1 416 (500-1)		960-1 1/8 416 (500-1 1/8)	
CIRCLING	1040-1 489 (500-1)		1280-2 729 (800-2)	1280-2 1/4 729 (800-2 1/4)

REIL Rwy 12 **0**  
MIRL Rwy 18-36 **0**  
HIRL Rwy 12-30 **0**