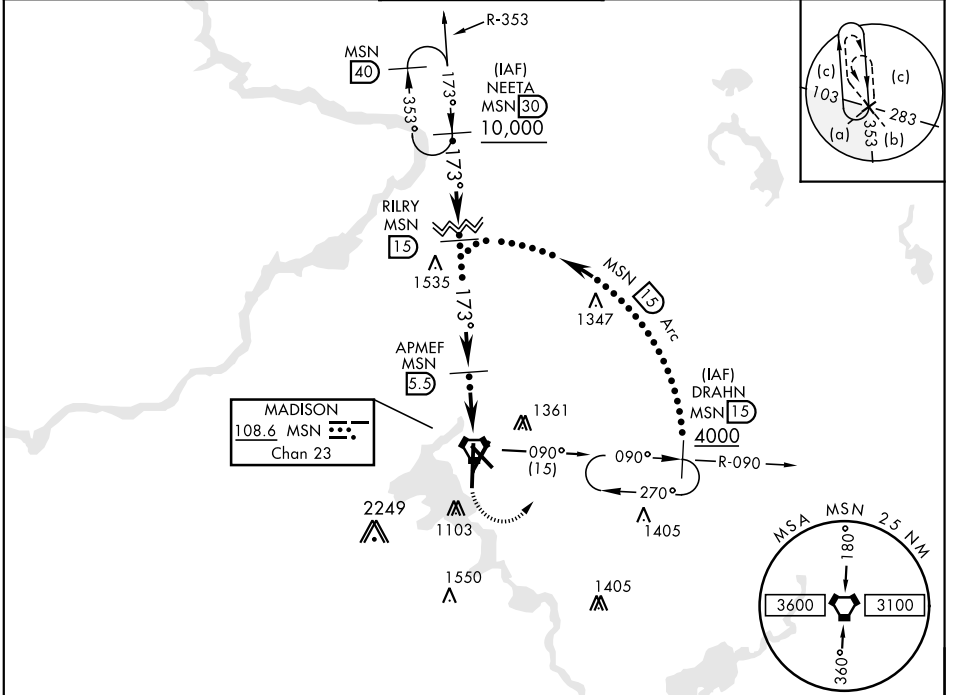


VORTAC MSN <b>108.6</b> Chan <b>23</b>	APCH CRS <b>173°</b>	Rwy ldg TDZE <b>8606</b> Arprt Elev <b>887</b>	JAL-245 [USAF] MADISON/ DANE COUNTY REGIONAL-TRUAX FIELD (KMSN)
--	-------------------------	--	--

**MALSR** MISSED APPROACH: Climbing left turn to 4000 on MSN VORTAC R-090 to DRAHN 15 DME and hold.

ATIS <b>124.65 278.3</b>	MADISON APP CON EAST <b>120.1 350.3</b> WEST <b>135.45 343.7</b>	MADISON TOWER ★ <b>119.3 0</b> (CTAF) <b>257.8</b>	GND CON <b>121.9 348.6</b>	ASR
-----------------------------	--	---	-------------------------------	-----

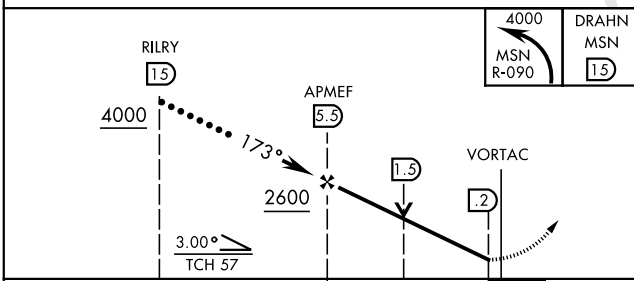


EC-3, 25 FEB 2021 to 25 MAR 2021

EC-3, 25 FEB 2021 to 25 MAR 2021

## RADAR REQUIRED

EMERG SAFE ALT 100 NM 3600



ELEV <b>887</b>	TDZE <b>859</b>
-----------------	-----------------

173° to VORTAC  
 951±  
 TWR 964  
 924±  
 916  
 7200 x 120  
 5844 x 150  
 9008 x 150  
 36  
 Rwy 3 ldg 6770'  
 Rwy 14 ldg 5369'  
 Rwy 18 ldg 8606'  
 Rwy 36 ldg 8017'  
 HIRL all Rwy 0  
 REIL Rwy 3, 14 and 32 0